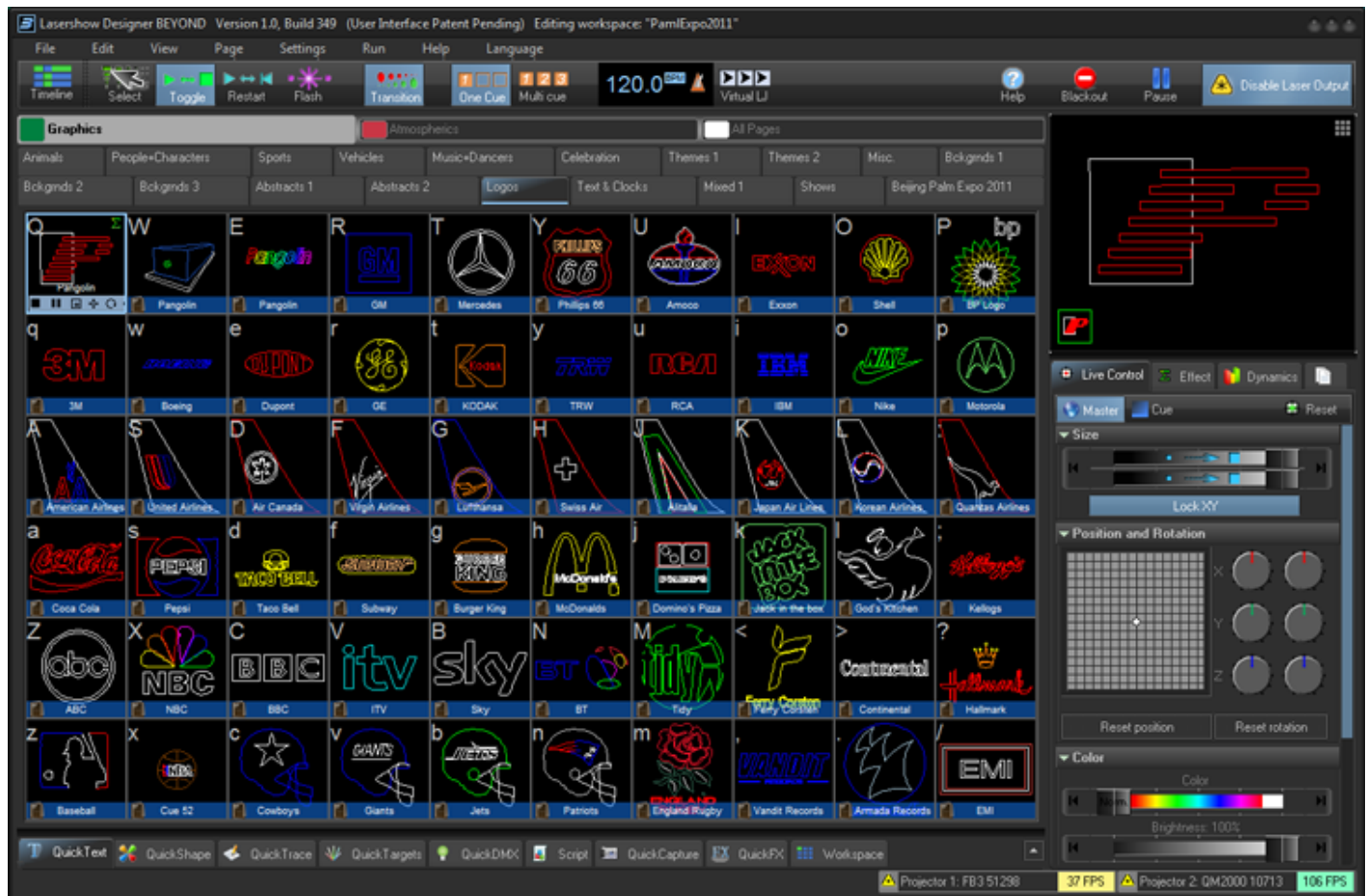


# Main Control Window

Below you will see a picture of the BEYOND Control Window. The Control Window is divided into sections. The largest section contains the Cue Grid. This is where you select and trigger cues. The lower section contains the QuickTools where new content creation takes place. The right section contains the Live control tab and Effect Editor tab.

Click on this picture to get more information about the various buttons and areas. (Click anywhere that the cursor changes to a pointing finger.)



## See Also

- Cue Grid
- Live Control tab
- QuickTools
- Laser Preview window

From:

<https://wiki.pangolin.com/> - **Complete Help Docs**

Permanent link:

[https://wiki.pangolin.com/doku.php?id=beyond:main\\_control\\_window](https://wiki.pangolin.com/doku.php?id=beyond:main_control_window)

Last update: **2020/06/11 19:20**

