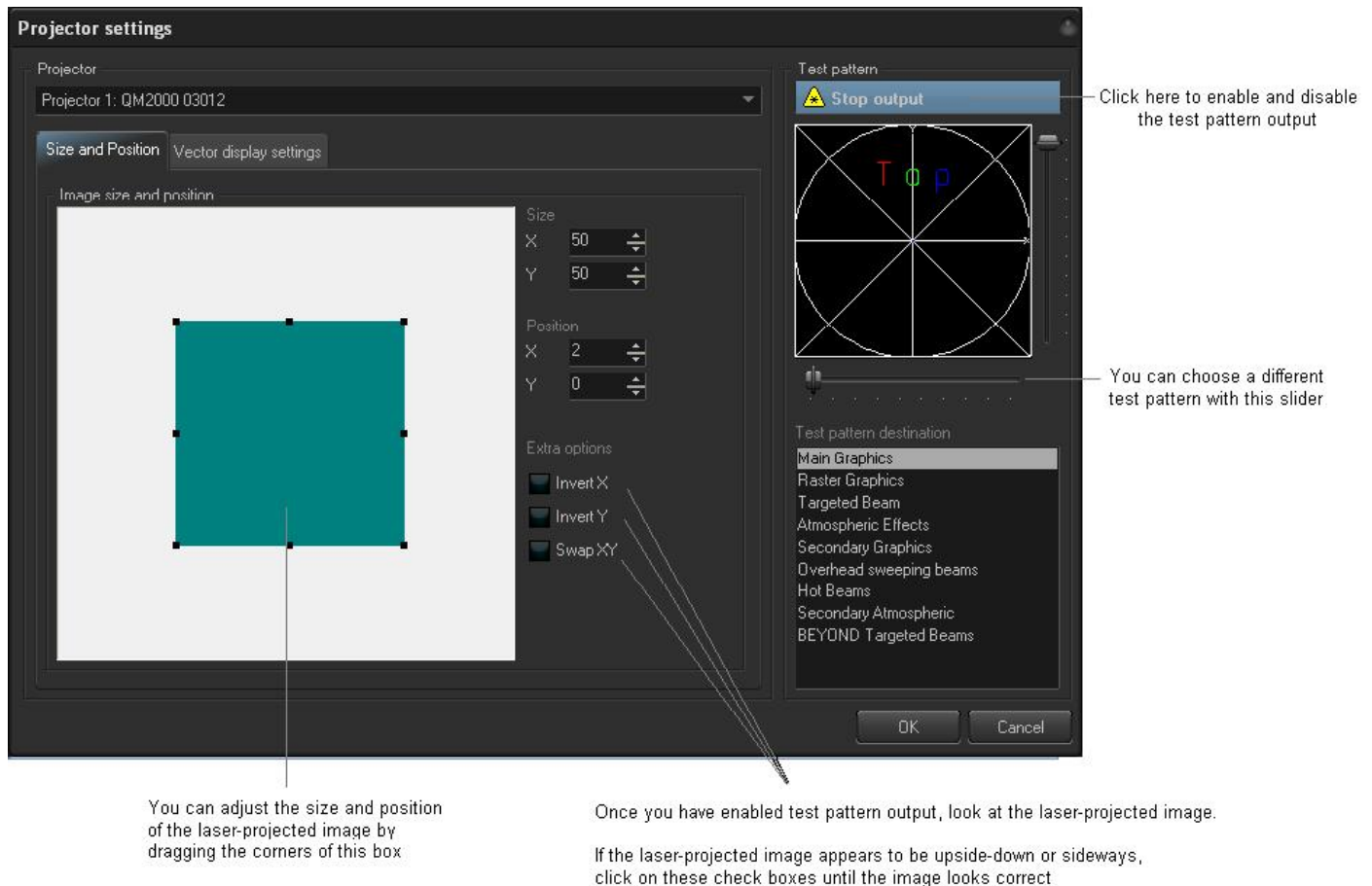


Projector Settings

The Projector Settings window allows you to configure BEYOND for your of projector. Available settings include size, position, scan rate, color shift, number of colors and color levels. For information on how to optimize these settings, please see Chapter 2 of the Video Help.

The first page of the Projector Settings window is shown and described in the picture below.



Setting the Master size and position, and extra options

Within the Master size and position tab shown above, the most important thing to do is to show a test pattern, and then adjust the size and position tool to fit the projected output to your projection screen (or area), and also the Invert X, Invert Y and Swap XY check boxes. We have noticed that some projector manufacturers require one or more of these check boxes to be checked in order for the "TOP" to look properly.

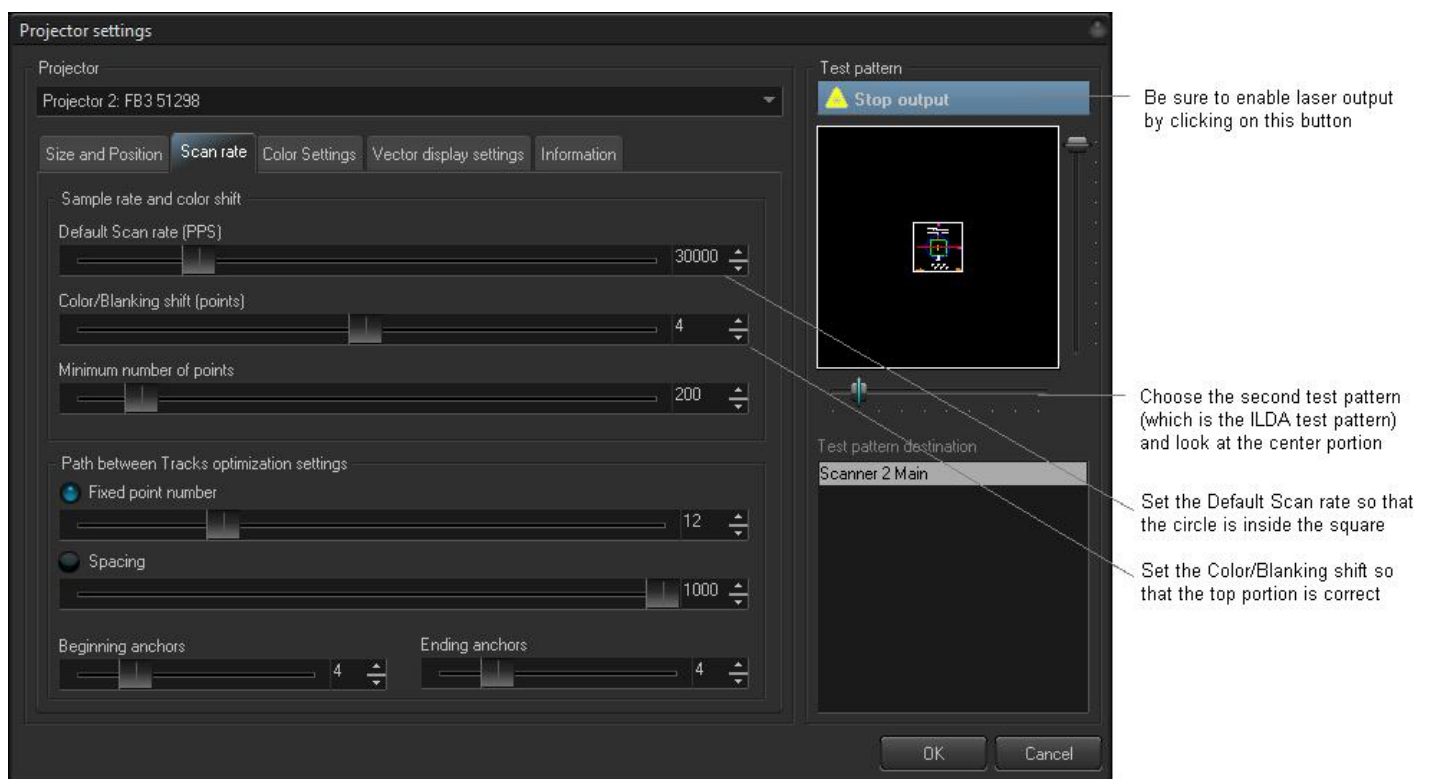
Scan rate and Color settings for the QM2000 and FB3

If you are using a QM2000 laser controller, then BEYOND will use the projector settings and color settings established in LD2000.

If you are using an FB3 laser controller, then you setup the Scan rate and Color within the Projector Settings dialog box. This is discussed below.

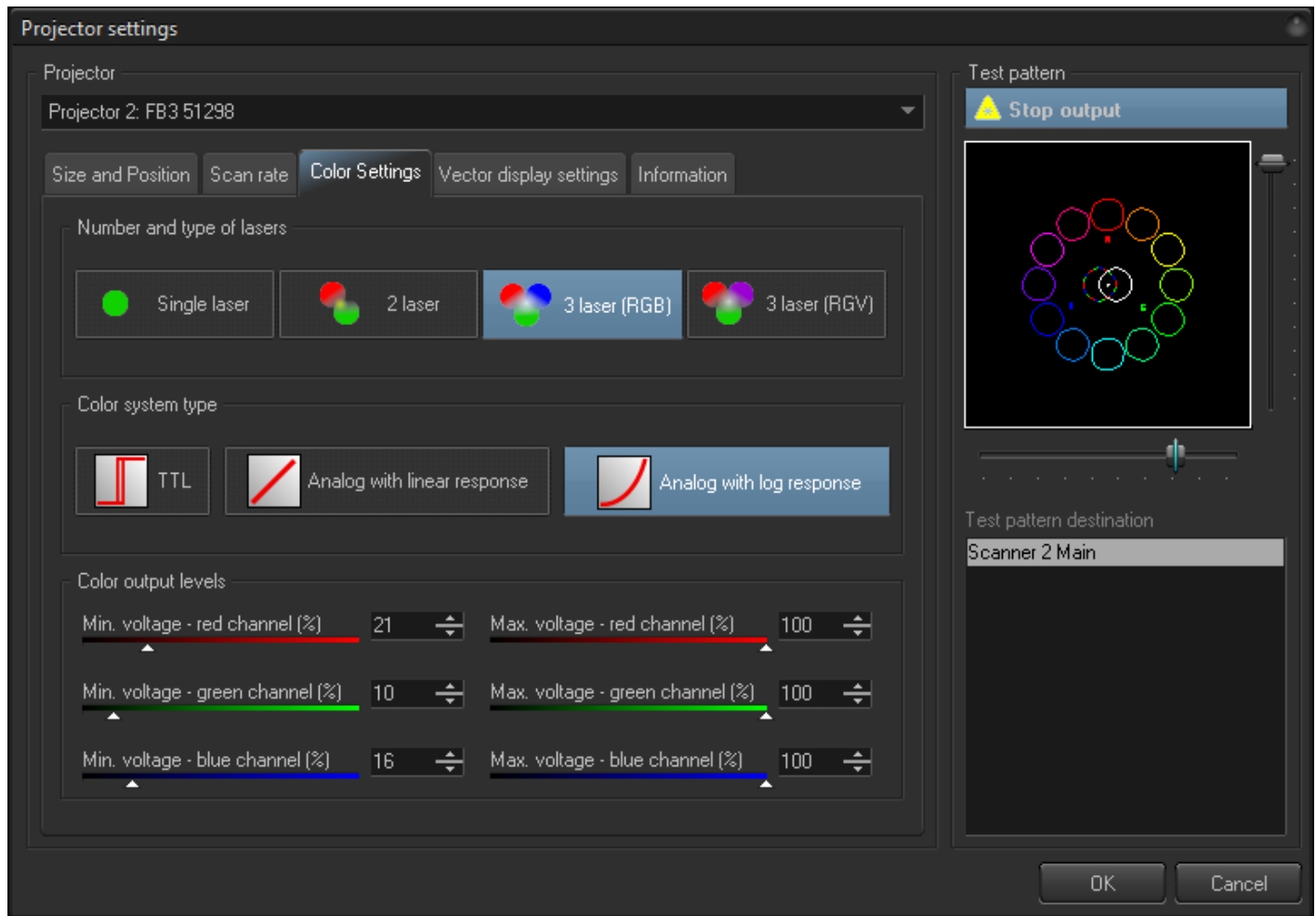
Setting the Scan rate (applies to FB3 only)

Another important part of the Projector Settings window is the Scan rate tab, as shown below.



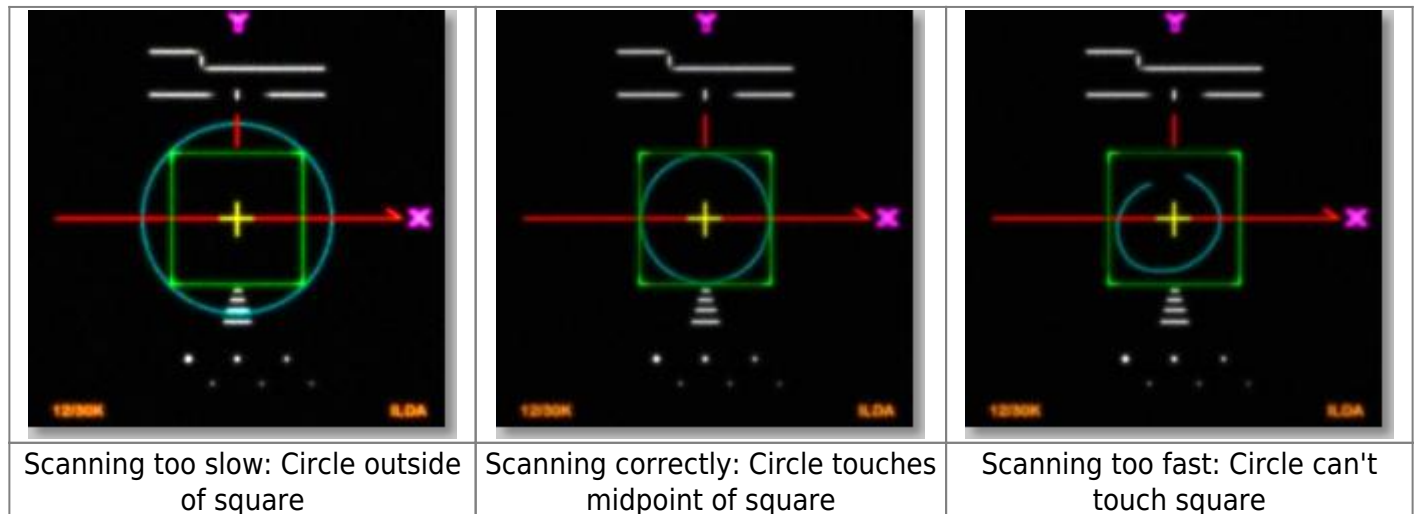
Setting up the colors (applies to FB3 only)

The Color Settings tab is shown below. Be sure to indicate the number and type of lasers in your projector, and the color modulation scheme (color system type) to use for your projector.



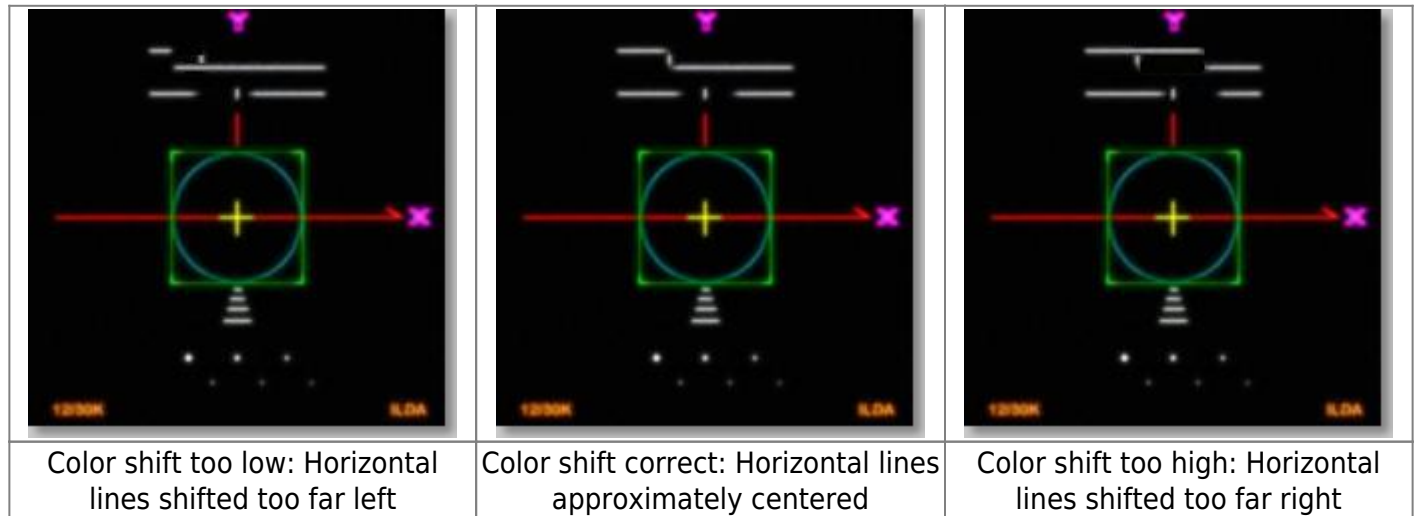
Using the ILDA Test Pattern to set the Default Scan rate

The ILDA tuning standard dictates that your scanners can show the ILDA Test Pattern in a specific way (circle touching the sides of the square), when the ILDA Test Pattern is displayed at the correct scan speed (points per second):



As you are projecting the ILDA test Pattern, look very carefully at the central section of the test pattern. Adjust the Default Scan rate slider in the Projector Settings window so that the circle is just touching the sides of the square. Note that sometimes the circle may touch only the sides but may be over on the top and bottom, or vice versa. Just adjust the slider for the best overall appearance of circle touching the square.

Using the ILDA Test Pattern to set the Color/Blanking shift



As you are projecting the ILDA test Pattern, look very carefully at the horizontal lines below the letter Y. Adjust the Color/Blanking shift slider in the Projector Settings window so that the horizontal lines are approximately centered around the vertical lines. Since the Color/Blanking shift is a somewhat coarse adjustment, it may not be possible to get the horizontal lines perfectly centered around the vertical lines. It is acceptable that the top set of horizontal lines be shifted slightly to the right – lining up under the letter Y.

Better scanners provides better results

Although BEYOND will work with any scanners and scan speed, BEYOND provides the best results with 30K or faster scanners that are tuned perfectly. Please make sure that the low frequency damping and high frequency damping are adjusted properly for “critical damping.”

From:
<http://wiki.pangolin.com/> - **Complete Help Docs**

Permanent link:
http://wiki.pangolin.com/doku.php?id=beyond:projector_settings&rev=1591896045

Last update: **2020/06/11 19:20**

