

Quick Setup

The very first time you run QuickShow, you will be greeted by the Quick Setup wizard.

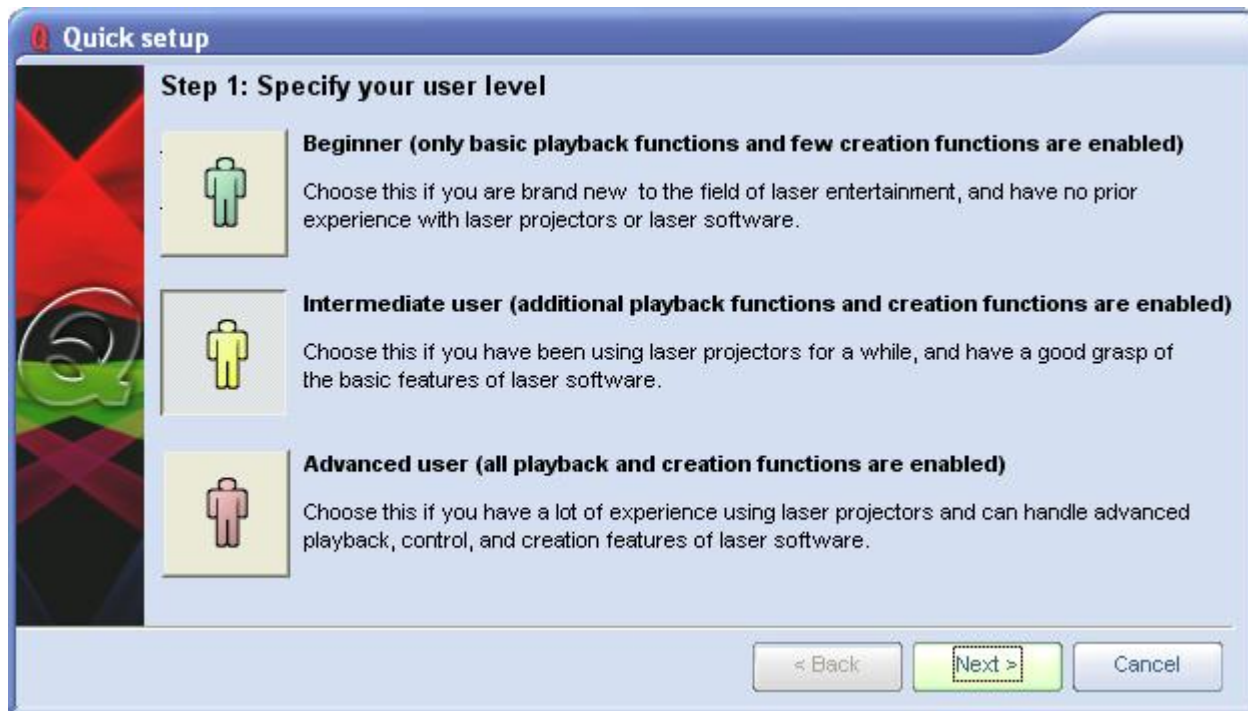
(Quick Setup can also be accessed at any time in the Settings menu.)



The purpose of the Quick Setup wizard is to help you to configure the most important parts of QuickShow to your needs and the needs of your projector

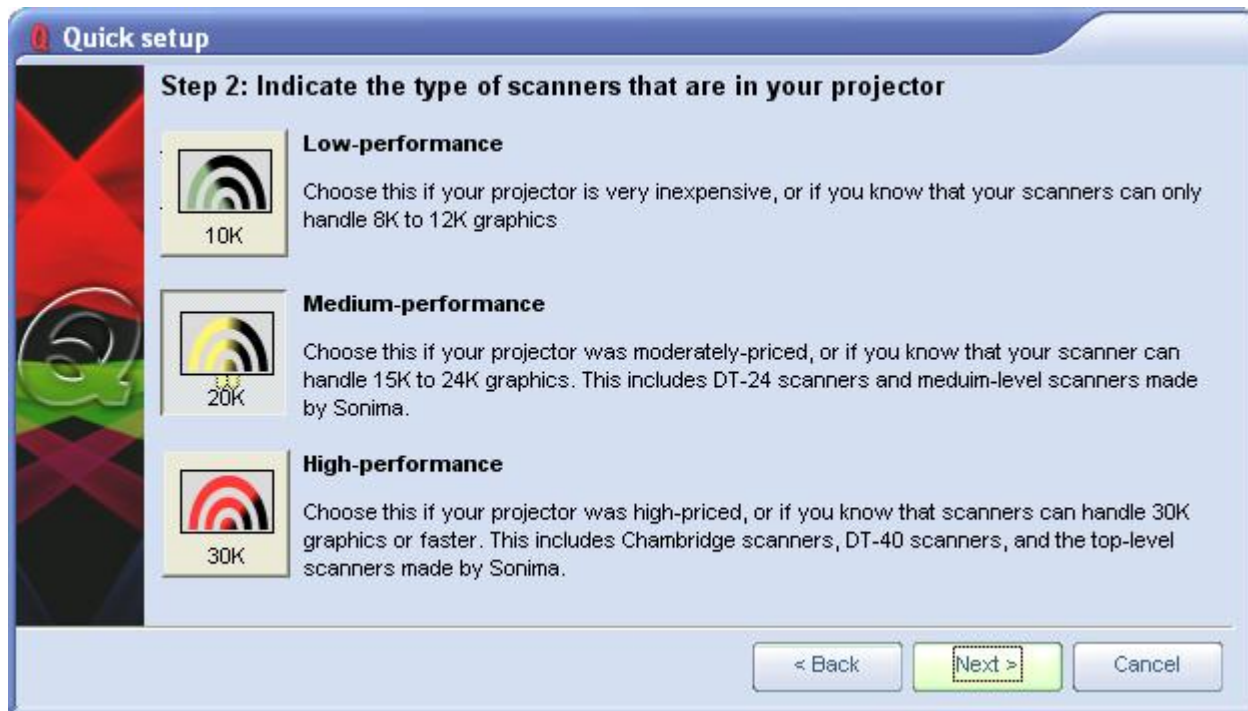
Step 1: Specify a user level

The first step in the process is to familiarize QuickShow with the type of user you are. When choosing a user level, you should be as honest as possible, since QuickShow will tailor the features you see based on your user level. If you are a beginner and you tell QuickShow that you are an advanced user, you might get confused by the advanced tools seen at the Advanced level.



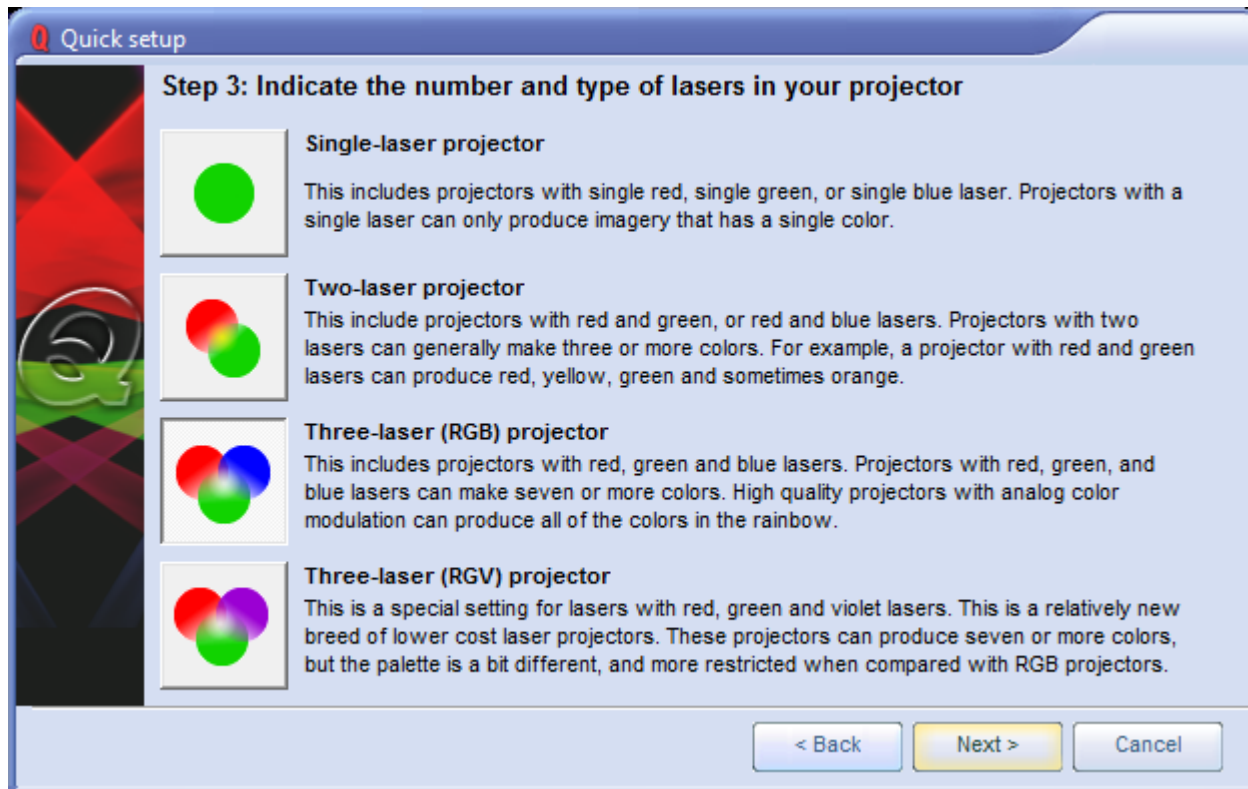
Step 2: Indicate the type of scanners you have

The second step in the process is to familiarize QuickShow with the type of scanners you have. **THIS IS VERY IMPORTANT!** If you have low performance scanners and you tell QuickShow that you really have high performance scanners, QuickShow may drive the scanners too hard which may cause excessive wear or heat. So when indicating the type of scanners you have, be as careful as possible. The high performance setting is only for American-made scanners, as well as the most expensive German and Chinese scanners.



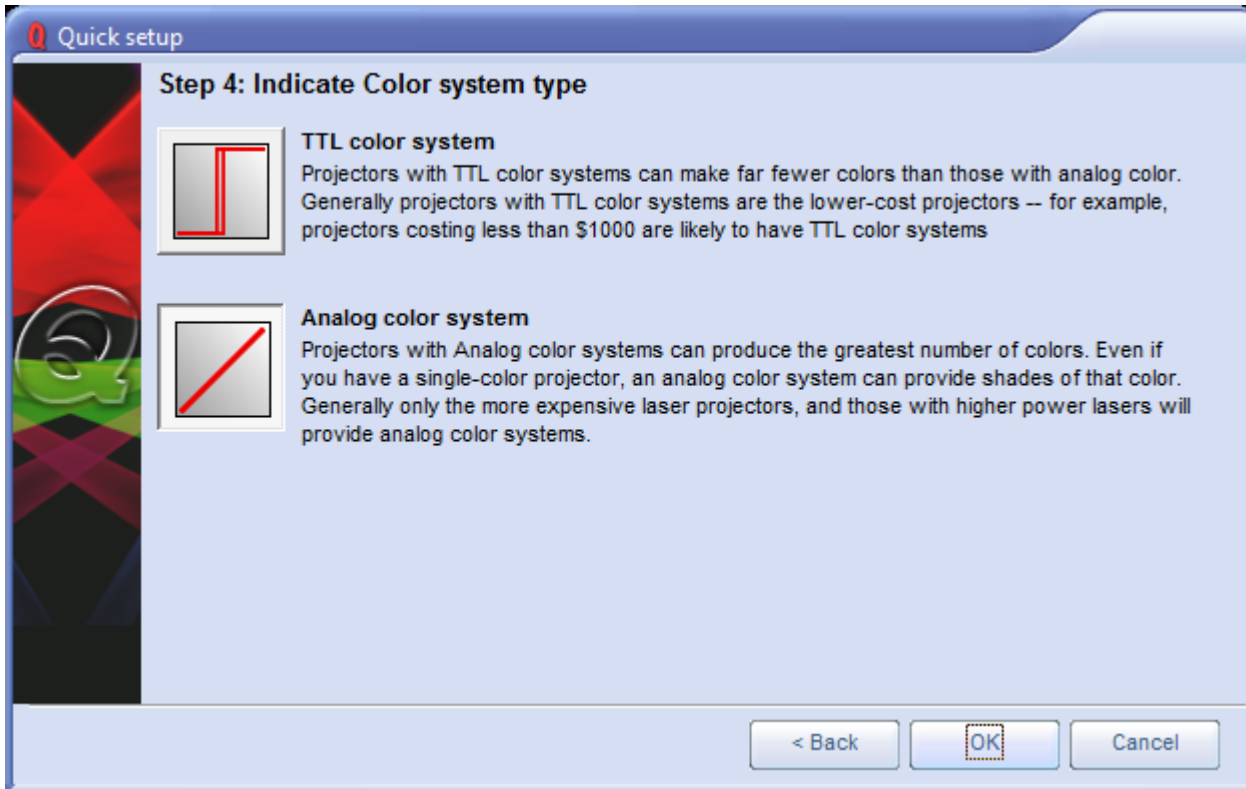
Step 3: Indicate the number of lasers in your projector

The third step in the process is to familiarize QuickShow with the number of lasers in your projector. This is important because if you only have a single-color laser and you tell QuickShow that you really have an RGB laser, then certain colors will not be seen in the projected imagery. Note that QuickShow is asking how many **LASERS** you have, not how many colors your projector can make (for example, a two-laser projector can make at least three colors).



Step 4: Indicate the type of color system used by your projector

The fourth and final step in the process is to familiarize QuickShow with the type of color system used by your projector. The lasers within a projector may have either TTL-modulated lasers, or Analog-modulated lasers. Generally less expensive and lower power laser projectors have TTL lasers, while more expensive and higher-power projectors use Analog-modulated lasers. You should review the specifications on your laser projector and make the right choice below, because if you make the wrong choice, QuickShow won't be able to project the maximum number of colors that your projector is capable of producing.



Setup the projector settings and targeted beam positions next

Although QuickShow can make the most important adjustments to the user interface and projector setup based on the selections that you made above, it is important to use the [Projector Settings](#) window to fine-tune QuickShow's output to your projector. Once that part is finished, it is important to [setup the targeted beam positions](#) after that.

See Also

- [Settings menu](#)
- [Projector Settings](#)
- [QuickTargets Beam Settings](#)
- [Projection Zones](#)

[Return to Index](#)

From:

<http://wiki.pangolin.com/> - **Complete Help Docs**

Permanent link:

<http://wiki.pangolin.com/doku.php?id=quickshow:quicksetup>

Last update: **2020/06/11 19:20**

