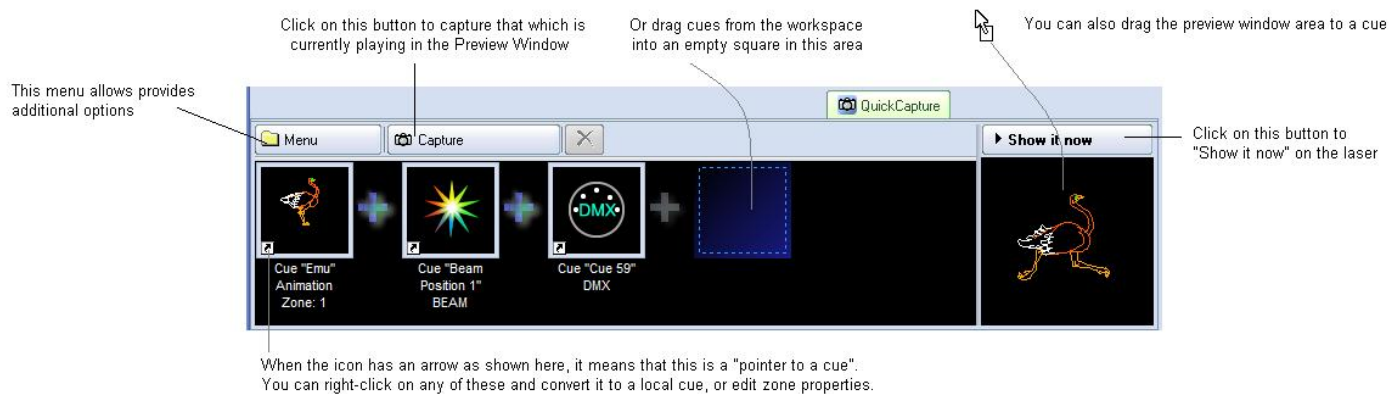


QuickCapture

The **QuickCapture** tool allows you to capture anything that is currently playing in the preview window, into a single cue, which can then be dragged and dropped into the workspace for use later. Simply click on the **QuickCapture** tab at the bottom of the screen and you will see the **QuickCapture** tool.

For example, if you are in **Multi-cue** mode, and you have three cues playing, you can capture that into a single cue, so that next time you want to trigger the same three cues, you can do it by merely clicking on a single cue.

The main features of the **QuickCapture** tool are shown and described in the picture below.



Displaying the capture momentarily

To send the output of the QuickCapture tool to the laser, simply click on the **Show it now** button.

Saving the QuickCapture to a cue

You can save the QuickCapture to a cue for permanent storage or for use later. Simply drag and drop the preview window (or the QuickCapture tab itself) to a cue.

See Also

- [QuickTools overview](#)
- [Pointing to a cue location](#)

[Return to index](#)

From:

<http://wiki.pangolin.com/> - **Complete Help Docs**

Permanent link:

<http://wiki.pangolin.com/doku.php?id=quickshow:quickcapture&rev=1564422124>

Last update: **2020/06/11 19:21**

