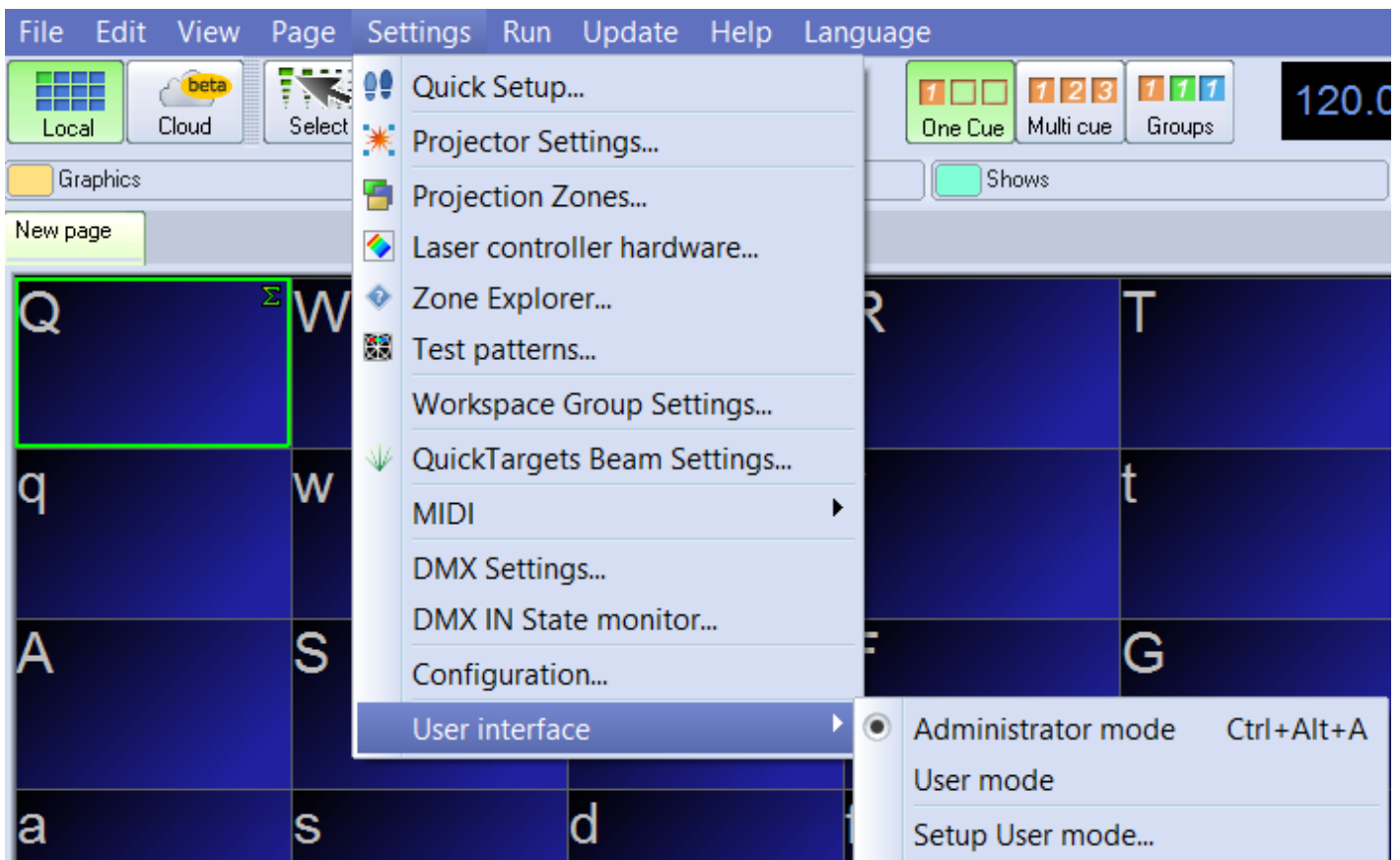


User-interface Access Mode

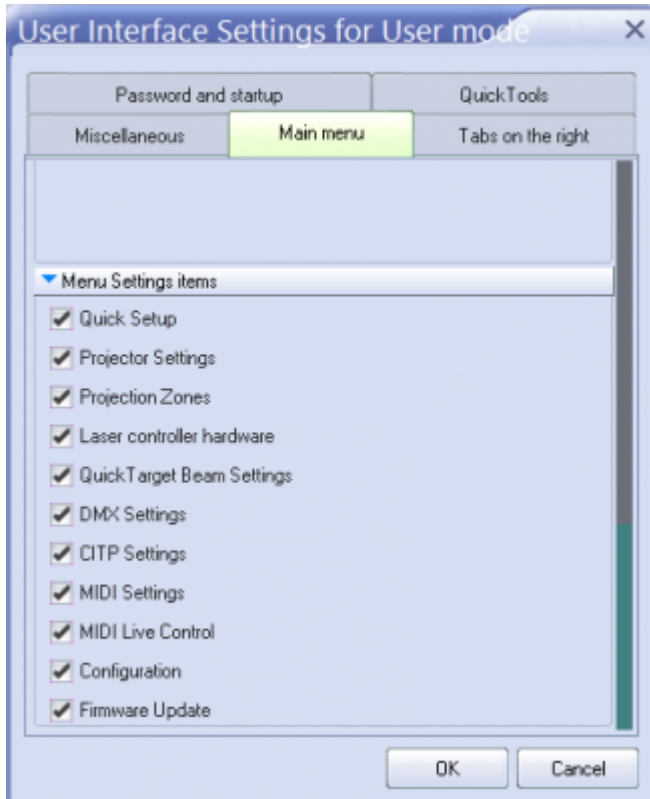
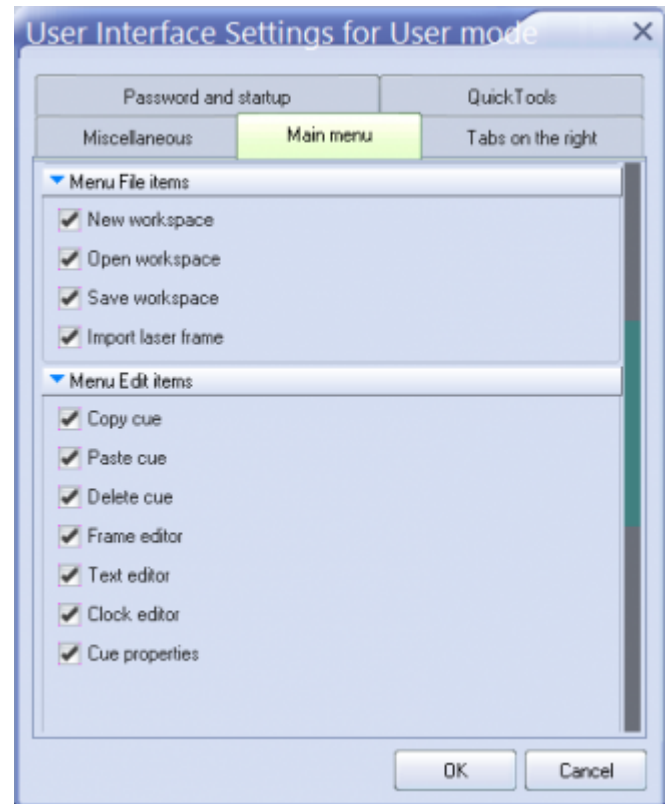
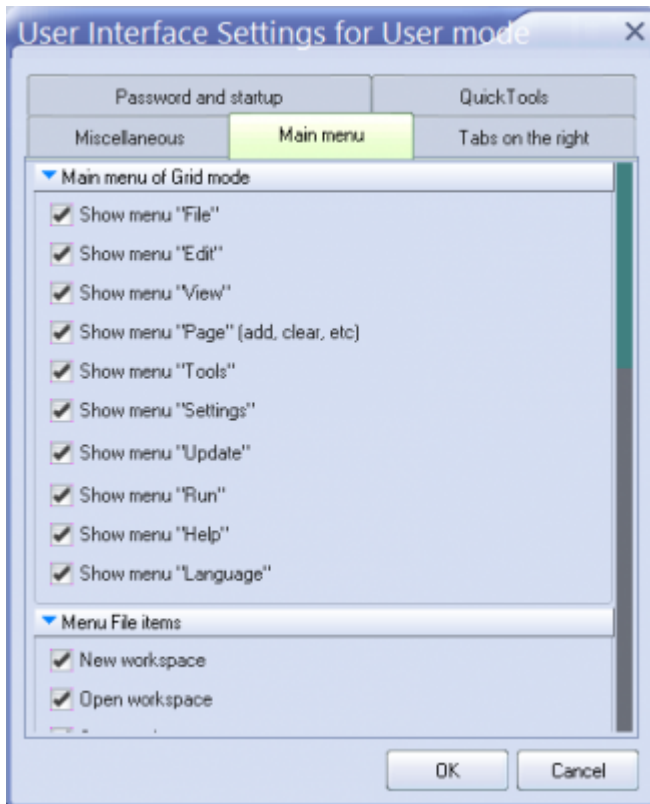
There may be times when you want to restrict access to certain parts of QuickShow. One case would be in a disco with a “light jockey” operator. He or she may not need to access all of the creation or cue editing features of QuickShow and instead would only need to trigger the already-setup cues and perhaps access a few Live Control features. For that reason, QuickShow provides a facility that allows you to indicate which features you want available in the “User mode”.

Setting up the User-mode restrictions

To setup the User-mode restrictions, go to the Settings menu, and choose **Setup User Mode** as shown below.



A dialog box will appear which allows you to control all aspects of the user interface, and also specify a password which must be used in order to go from User mode back into Administrator mode.



See Also

- [Settings Menu](#)

[Return to Index](#)

From:
<http://wiki.pangolin.com/> - **Complete Help Docs**

Permanent link:
http://wiki.pangolin.com/doku.php?id=quickshow:user-interface_access_mode

Last update: **2020/06/11 19:20**

