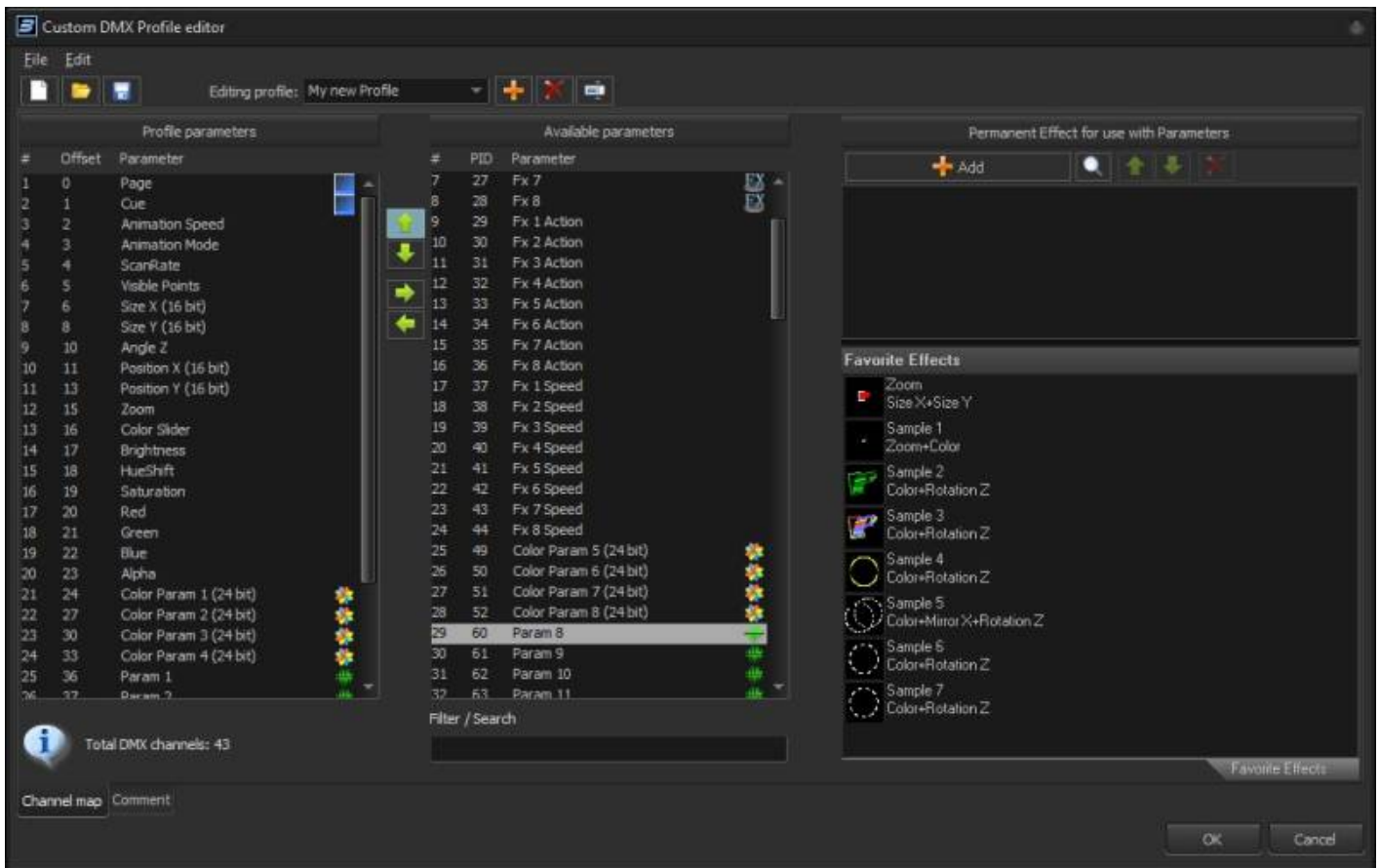


# Custom DMX Profiles

Custom DMX Profiles is a new functionality for **BEYOND DMX Server Mode** that allows users to create custom arrangements of DMX channels in custom profiles. It also allows you to bake effects into the profiles, allowing users to use the BEYOND effects engine within a DMX Profile. This allows users to determine how detailed or complex of a DMX profile they want or need from their lasers, giving the power to decide into the users' hands.

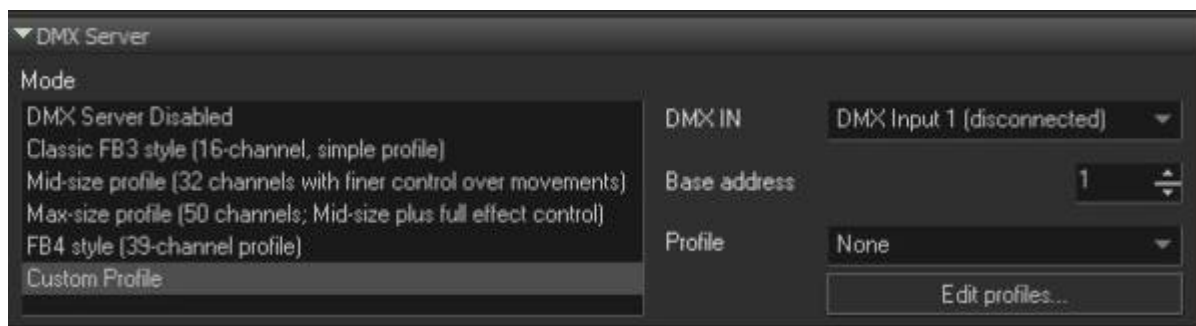


The Custom DMX Profiles are a collection of many functionalities of BEYOND, and uses some of the following features to create the Custom functionality in this UI

- **effects**
- **Channels**
- **QuickFX**
- **BEYOND DMX Server Mode**

## Custom DMX Profile Editor

To use Custom DMX Profiles, first go to Projection zones, Advanced tab, and go to DMX server, you will see the option for "Custom Profile". This will select custom profiles, to the right you will be able to select which custom profile you would like to use, or click edit profiles to edit your Custom DMX Profiles.

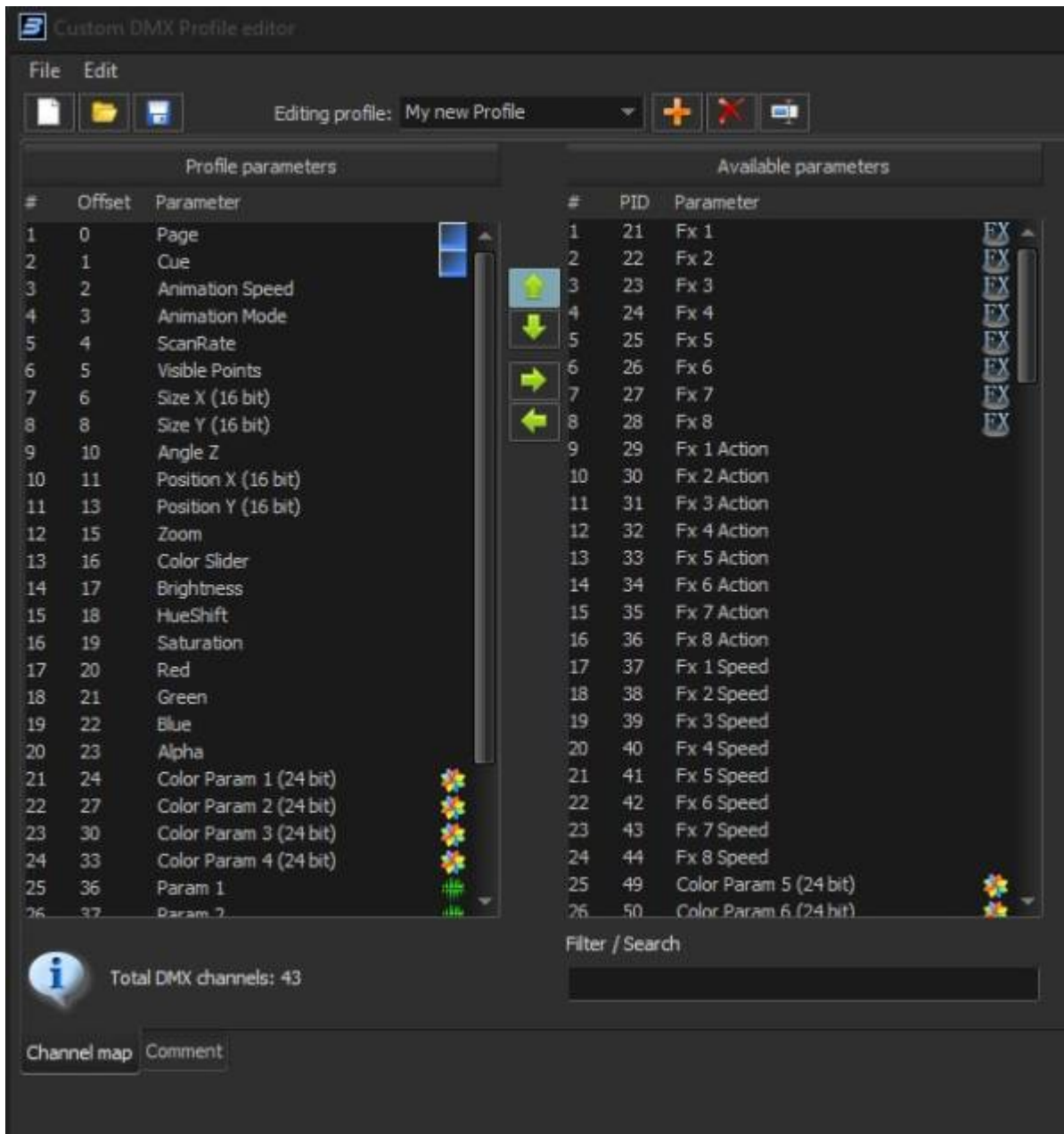


## Custom DMX Profile List

The Custom DMX Profile editor is a window with its own file, this allows you to store all your custom profiles inside a single file to be selected from, or transferred to other systems. To facilitate this you can create new lists, open lists and save lists, and add, remove, or rename profiles in your list. Using the dropdown you can select which custom profile you are editing, in your list.

You can also add comments and text to your list if you would like to leave instructions for use or notes about the profile using the “comment” tab at the bottom left of the window, this is saved in your list file.

## Custom Profile Parameters



## Channels and Color Channels

### Default FX

From:  
<https://wiki.pangolin.com/> - Complete Help Docs

Permanent link:  
[https://wiki.pangolin.com/doku.php?id=beyond:custom\\_dmx\\_profiles&rev=1680551649](https://wiki.pangolin.com/doku.php?id=beyond:custom_dmx_profiles&rev=1680551649)

Last update: **2023/04/03 21:54**



