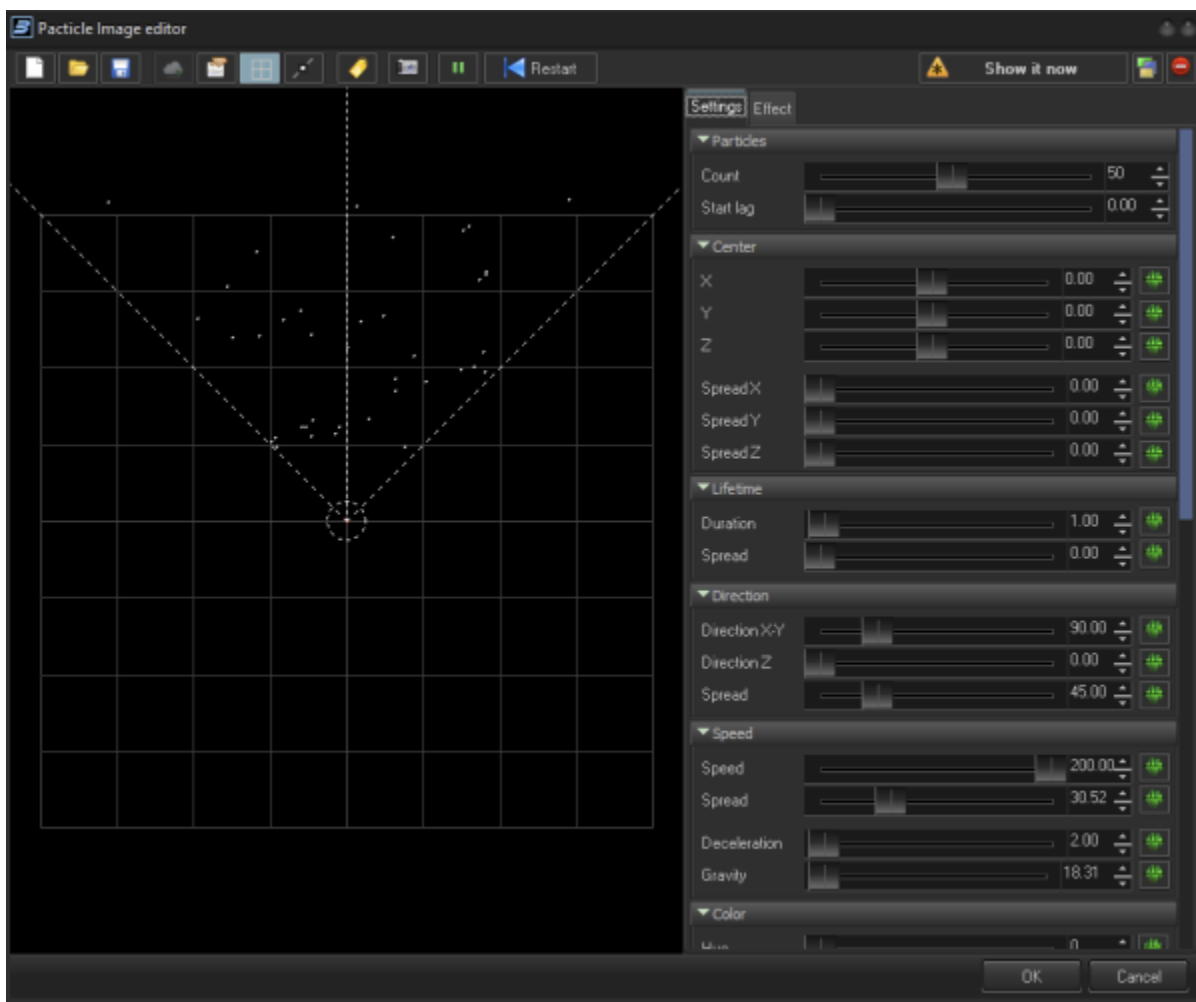


# Particle image editor

New is the Particle image editor. This feature allows you to introduce a particle stream to BEYOND. This function can be very handy if you want to show for example, a water fountain that sprays in various directions, create organic feeling firework sparks or have a moving stary sky.

A particle can change every time you start a cue, even on the timeline this particle can change every time you run a show from BEYOND. When a show with particles is exported to FB4, it will become an animated frame and always stay the same.



The Particle image editor offers a wide range of settings and an effects tab. This means that on top of the default parameters, you can also apply additional effects identical in functionality of the [Effects tab](#).

On the settings tab, you can find the following parameters :

Parameter section	Function
Particles	Allows you to change the amount of particles and the start lag.
Center	Allows you to change the point and spread of the particles at the start point.
Lifetime	Allows you to influence the time a particle will be visible.

Direction	Allows you to change the direction of a particle stream.
Speed	Allows you to alter the speed of the particle stream.
Color	This allows you to change the color (hue) of the particles.
Boundries	This allows you to set boundries on where the particles will flow.
Particle spinning	This allows you to change the direction and motion of particle streams.

From:

<https://wiki.pangolin.com/> - **Complete Help Docs**

Permanent link:

<https://wiki.pangolin.com/doku.php?id=beyond:particle-image&rev=1700155405>

Last update: **2023/11/16 18:23**

