

Projection Zones in BEYOND

Introduction

BEYOND includes Pangolin's exclusive ILDA-Award-winning **Projection Zones** technology, that allows BEYOND (running on a single computer) to access a virtually unlimited number of projection areas (zones), either from a single laser projector, **or from up to 24 laser projectors**.

As BEYOND can control a virtually unlimited number of laser projectors, if you need to control more than 24 laser projectors at a single event, you can use multiple computers, and network those together within the BEYOND software.

Projection Zones in BEYOND

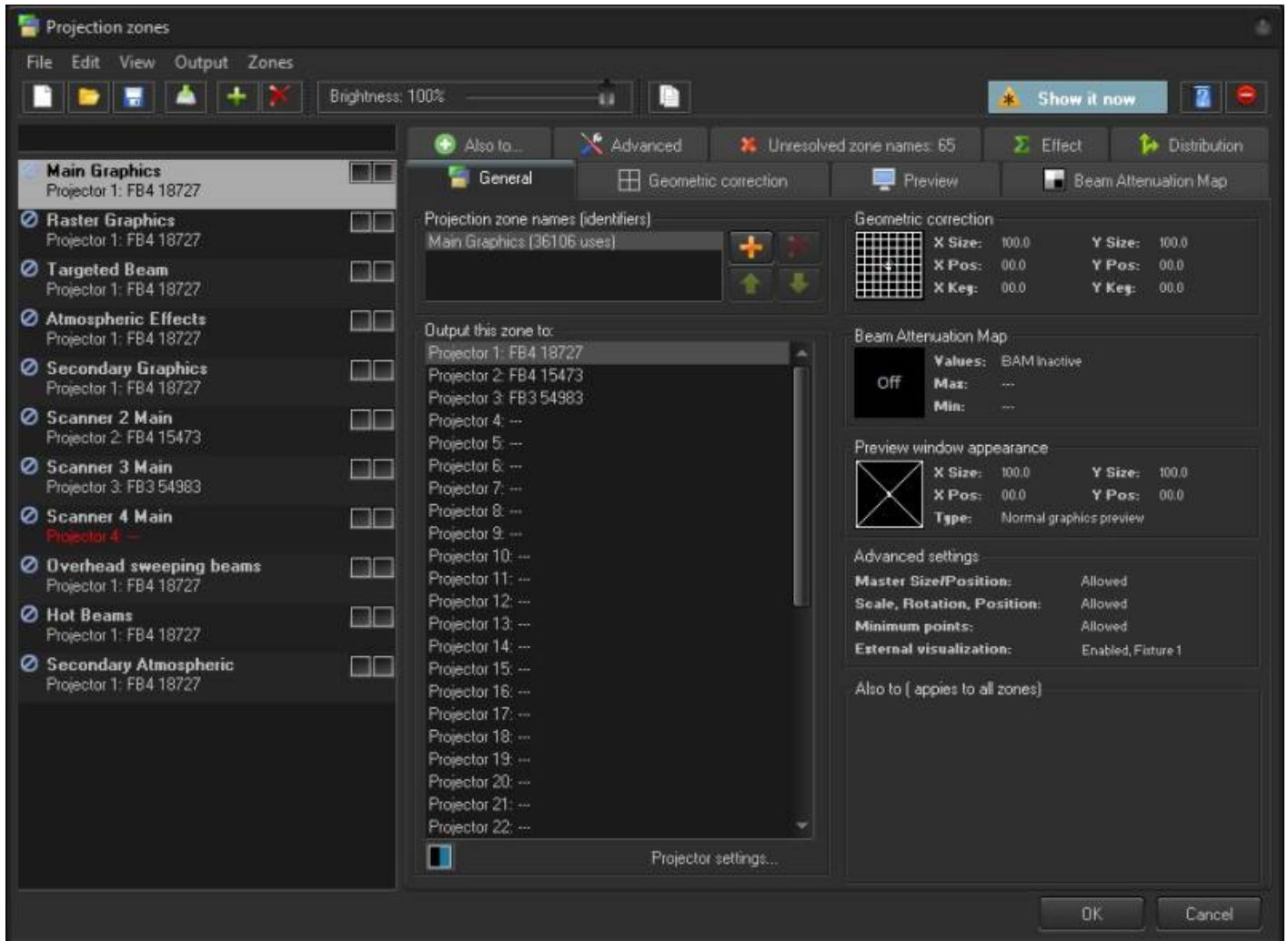
BEYOND software has a few improvements in the Projection zone system. First, BEYOND uses a zone's name as a method of zone identification. LD2000 and QS use the number of a zone in the list (index of zone). Using the name as an identification tool allows you to easily move zones up and down in the list, unite zones and most importantly - The name of a zone can provide an indication as to what the zone is. For example, one BEYOND client can place a zone (i.e. hot beams) in position number 10, while a different client places it in position 20. Using this new identification tool, clients can easily exchange the data (frames, shows, etc.) and the frames will go to the right destination.

Projection Zones combine the projector selection guide along with a variety of other tools to help you control your zones.

These include:

- **General Tab** - Allows you to see an overview of all settings for the zone, and see all a zones names and which laser output is selected.
- **Geometric Correction** - Which allows you to control a zone's size, shape, position, rotation, etc..
- **Preview Window Appearance** - Allows you to preview the appearance of a zone.
- **Beam Attenuation Map** - This is a safety tool that allows you to control the brightness of a zone.
- **Also To** - A tool providing options for routing output from the specific zone you are setting up to additional zones (similar to using a hardware splitter between zones).
- **Effect Tab** - Where you can set an effect that can always be applied to the zone and work as a filter.
- **Advanced Tab** - Where you can prevent other settings from impacting a zone along with an External Visualization fixture number setting, for use with an external visualization applications (like Capture, Realizzer or Light Converse).
- **Distribution Tab** This tool allows you to "stack" lasers together to have multiple lasers work on the same output, by scanning different parts of an image at the same time, theoretically doubling scan speed for an image.
- **Unresolved zone names** May appear if content in your workspace, timeline or playlist has zone

names assigned that are not found in your projection zone list, and can be used to reroute those zones.



The list of projection zones can be seen and selected on the left side of the window. When you click on a zone on the left side, the tabs on the right allow you to view and adjust the parameters for each projection zone. To view and adjust the parameters, click on the **Geometric Correction, Preview Window Appearance, Beam Attenuation Map, Also to, Effect, or Advanced** tab.

Hint: In recent versions of BEYOND, it is possible select more than one projection zone in the list and adjust them simultaneously. Multi-Zone editing can be used for Geometric correction, BAM and Preview Settings tabs.

NOTE: When a listing is red, it is because there is no laser controller that is able to output to that projector (scanner).

At the top of the Projection Zone settings menu there are 4 typical menu options - File, Edit, Output, and Zones. These are discussed in the next section

File, Edit, Output, and Zones

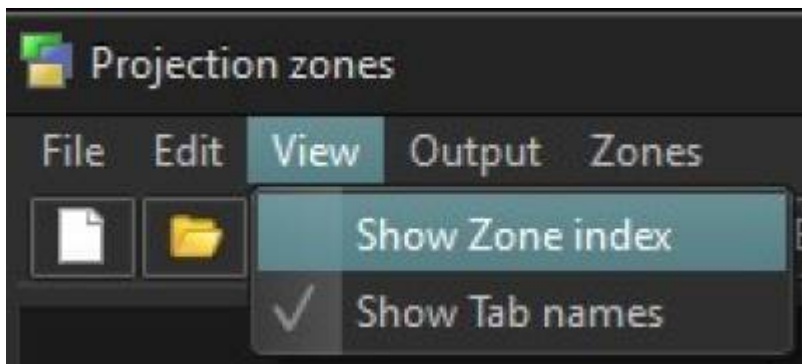
In the File menu dialog, you can select “**New**”, to clear out all custom Projection Zone settings and restore them all to their default settings, “**Open**”, to open a saved Projection Zone settings file, “**Save**”, to save out a Zones file with custom Projection Zone settings made. You can also quicksave with the same zone file name, as well as add zones from a separate zone file. As well as export and import from CSV, which could be useful for creating large numbers of names and simpler diving and loading of complex zone files.



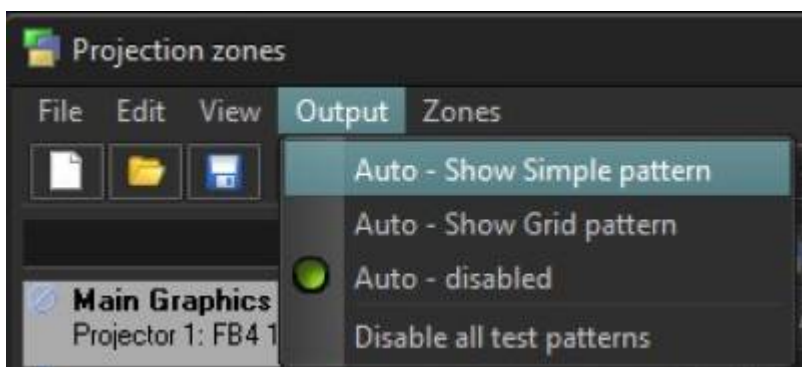
In the Edit Menu dialog, you can select a Zone and choose “**Copy**”, to copy all the selected Zone’s settings into Clipboard, “**Paste**”, to replace all of a Zone’s settings, with settings from a Zone that you have copied, “**Reset**” to reset the Zone settings to default for a Zone you have highlighted, or “**Reset All**” to reset all of the zones listed, to their default settings. As well as add “Scanner # Main's” zones to quickly add a bunch of defaultly named zones, and permit over scaling of geometric correction sliders.



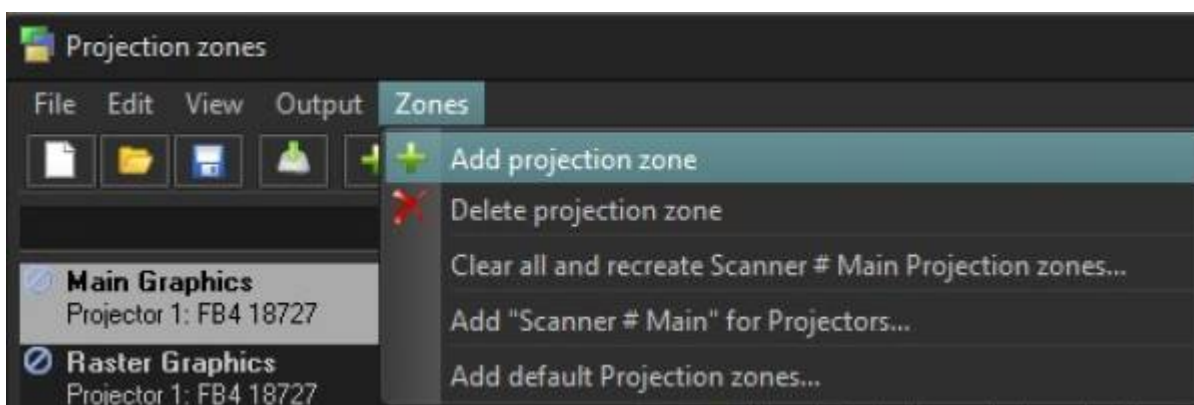
Under View, you have the option to additionally show the zone index number, which will correspond to the numbers in the test patterns, and show or hide the full names of the tabs on the right.



In the Output menu you can choose your method of displaying Projection Zone test patterns. You can choose to do this automatically when the Zone settings are opened, or to have no test patterns displayed so that you manually have to do it (this is the default setting, for safety reasons). You can also choose to disable all test patterns.



In the Zones menu you can add or delete Projection Zones. Clear all and recreate all scanner # zones, add all scanner # zones for connected hardware and add the default zones to your zone file.



Most of these tools are also located on the Projection Zone settings' tool bar, with the addition of an "About" Projection Zones button and a Master Brightness slider.



Projector (i.e. Scanner) Output

The area toward the top of the General tab, labeled “**Output this zone to**” allows you to indicate the projector (Laser Controller Serial number) that will be used for that zone, and also to adjust the parameters for that projector. This is how you indicate which projector will be used for each zone. Pressing the “Settings...” button will display the **Projector Settings** window.

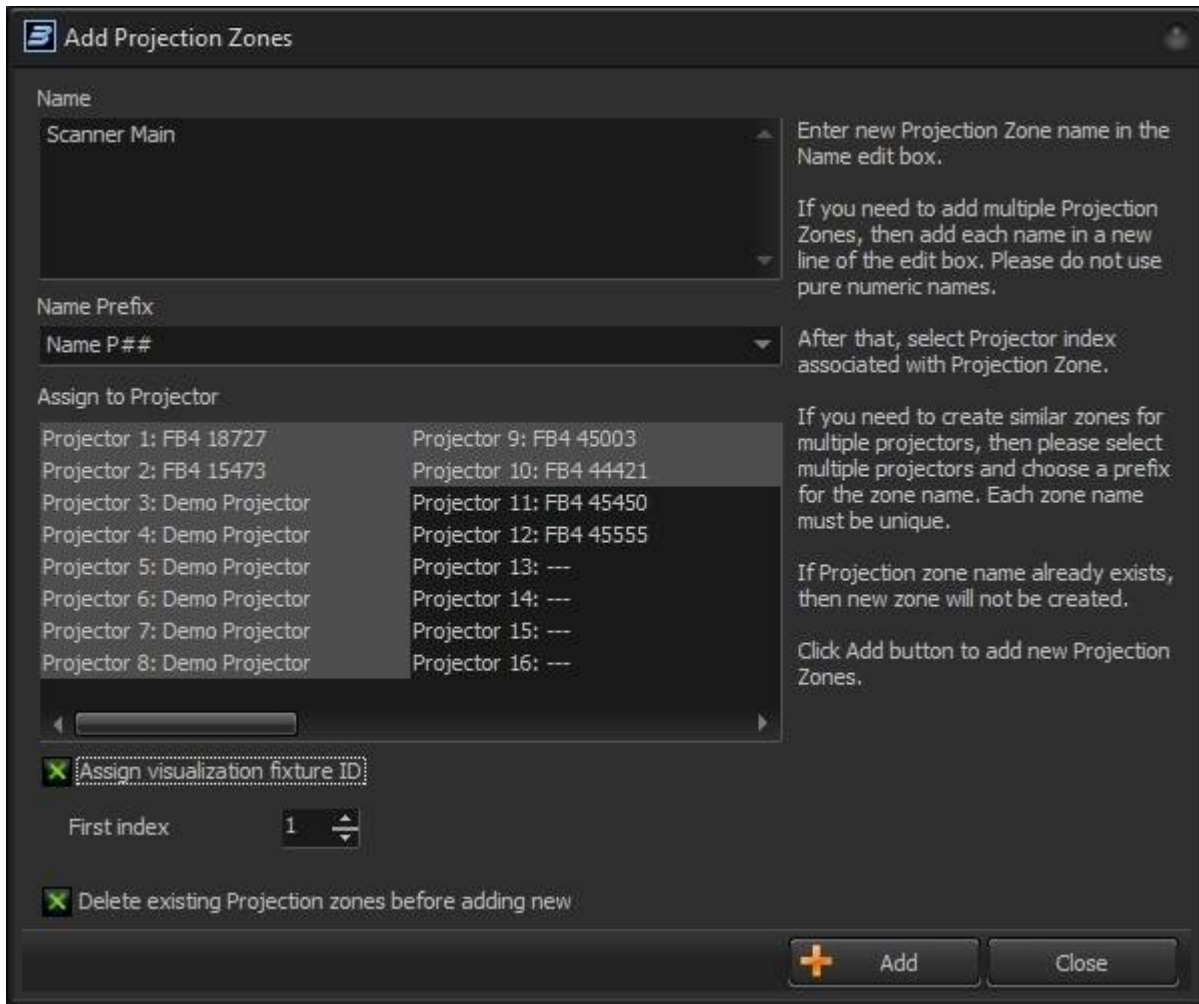
Our recommended order of settings is as follows:

1. Set the order of controllers in the Laser and EmuLaser hardware dialog
2. Adjust the Projector Settings
3. Adjust the Projection Zones

Controllers and Projectors are sort of “low-level layer” that reflect a real hardware setup. Projection Zones use a higher level setup.

Add Projection Zones Window

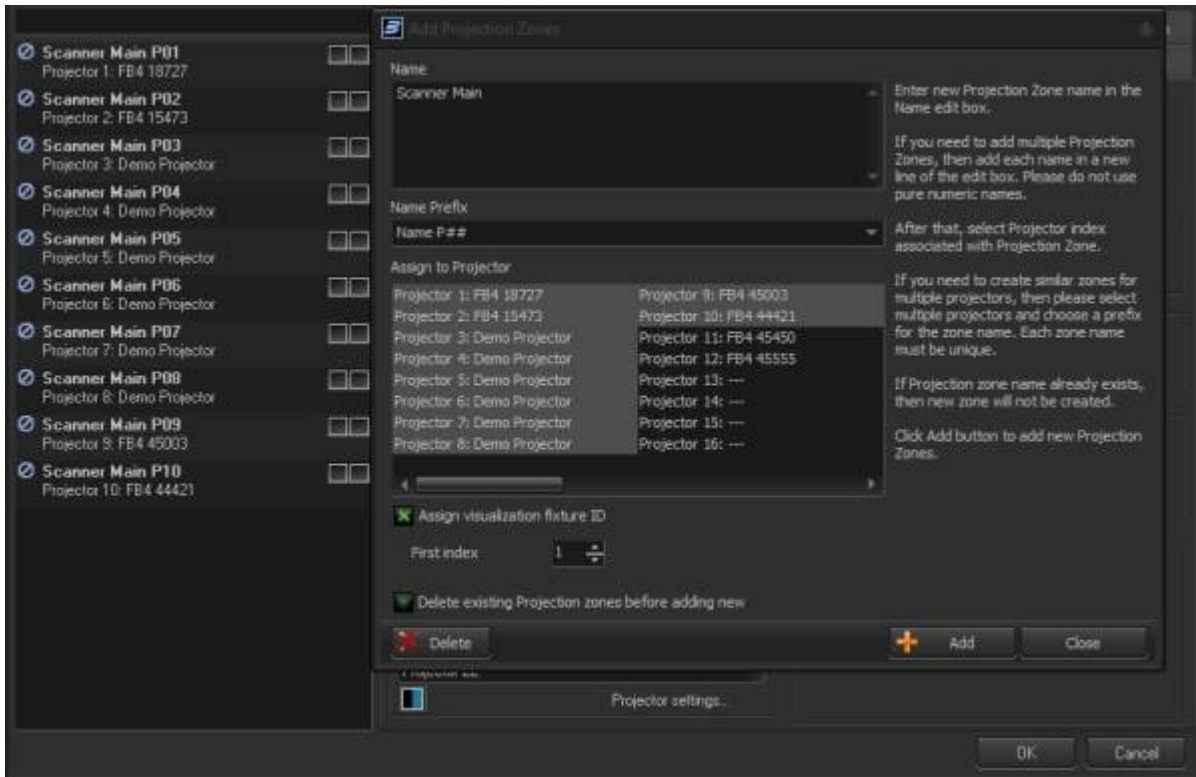
Introduced for BEYOND 5.5, You can now utilize an updated “Add” window, allowing users to create multiple zones that span many lasers and automatically number them. This should speed up creating your initial zone file significantly.



You can create either a single name, and select prefix options from the “Name “Prefix” and BEYOND will automatically number your zones, or you can manually list all zone names you would like in order by just listing the zone names on different lines in the “Name” box. Then you can select multiple projectors and projectors will be assigned to zones in order of name and number.

You can also have BEYOND automatically assign the visualization fixture ID for these zones and set the first zones index and it will count up from there.

The final option allows users to delete all zone names that exist when creating, so you dont have to delete all the stock zones first, it can complete that step for you.



Just click add to add your zones, if you don't like what was created, or need to fix something, just click delete before closing this window and you can start again.

Projector Zone Names (Identifiers)

Projection Zone Names allows you to specify one or more **Projection Zone Names**. Since there are many zones, you should give a descriptive name to each zone for identification, such as “Main Graphics” or “Scanner 2 Beam zone”.

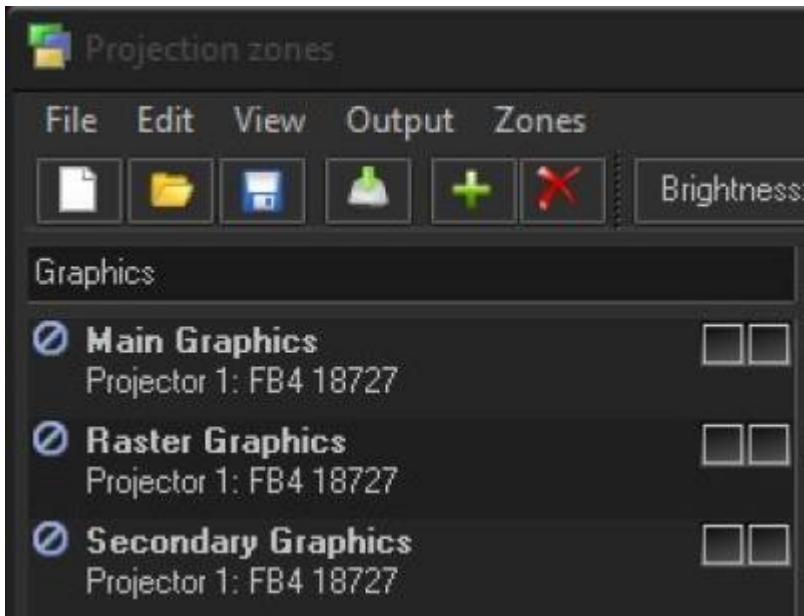
The Zone Name is very important because it is used for content (shows, frames) and that content will memorize this name. If the content uses a zone’s name that does not exist, then output for this content will be blocked. This is done for safety reasons.

Zone Names are also used as identifiers of Zones within PangoScript. The identifiers have rules. The identifier must start from with a character (A..Z), and contain both characters and numbers. **Spaces, delimiters and other characters are not allowed.** The name cannot start with a number either.

While this may seem restrictive, it is actually a standard rule for various programming languages. **NOTE: You only need to remember these rules, if you will use PangoScript.**

BEYOND automatically creates a zone identifier from a zone’s name – BEYOND removes the spaces automatically in this regard. For example, “Main Graphics” will be transformed to “MainGraphics”.

In BEYOND 5.2 you can now search the names of zones by name and serial number to help find the zones you are looking for.



Additional Zone Names

Zones may also have more than one name. All additional names work in the same fashion as the main name does. The secondary (additional) name can be helpful if you take content from another system that uses other zone names, and you are not able (for various reasons) to modify that zone's content settings (for example if you were programming a show, for another company). In such cases, you can assign additional names to some of your zones, and work with the Content in this way.

Mute Zones

This allows you to temporarily block output from a zone.

Test Pattern Control

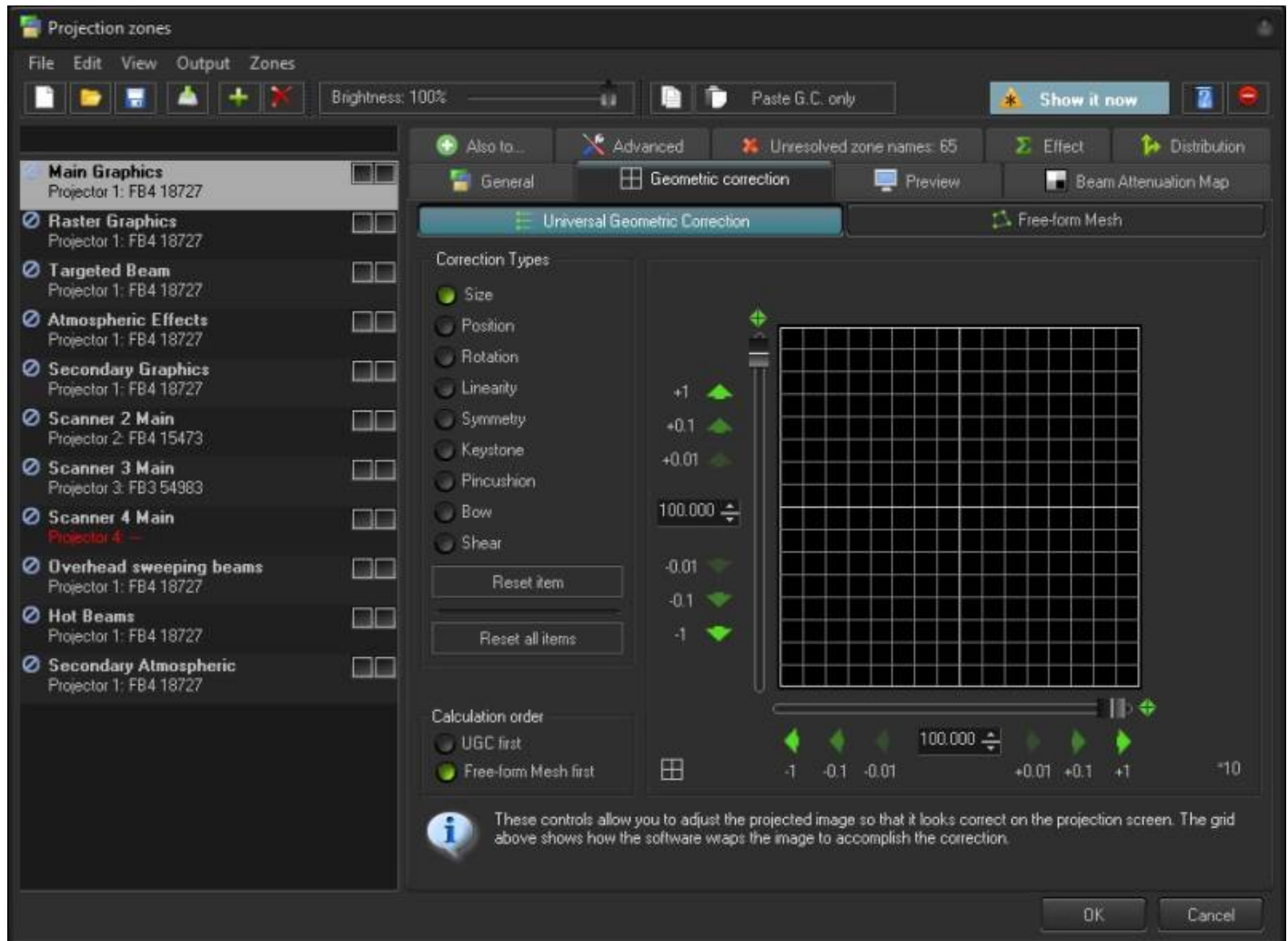
Two boxes next to the Zone Name allow you to display a test pattern if desired, and it is possible to project a test pattern on multiple zones simultaneously in this mode. This allows you to adjust geometric correction settings on overlapping projectors.

There are two different test patterns available for selection: a Simple test pattern and a Grid test pattern. The simple test pattern has roughly 500 points, and the grid test pattern has roughly 1000 points. Using the simple test pattern (when you are projecting multiple test patterns from the same set of scanners) will help to reduce flicker.

In addition to the lines that make up the actual test pattern, each test pattern also has an identifying number to help distinguish which test pattern is being projected from which zone.

Geometric Correction

The **Geometric Correction** settings allow you to adjust the geometric correction for each projector. In addition, each projector can actually have multiple geometric correction settings (if desired) simply by directing more than one zone to the same projector.



To adjust the geometric correction in BEYOND, you have two options. First, you can use the Universal Geometric correction tools (similar to QuickShow and LD2000) or you can use the Free-form Mesh tool, or you can use both.

To use the Universal Geometric correction tools allow you to click on one of the different **Correction Types** and then move the sliders that appear on the sides and top of the window, or you can click and drag the mouse in the window area. Each correction type has a reset button and there is also a reset all button to reset all the correction types.

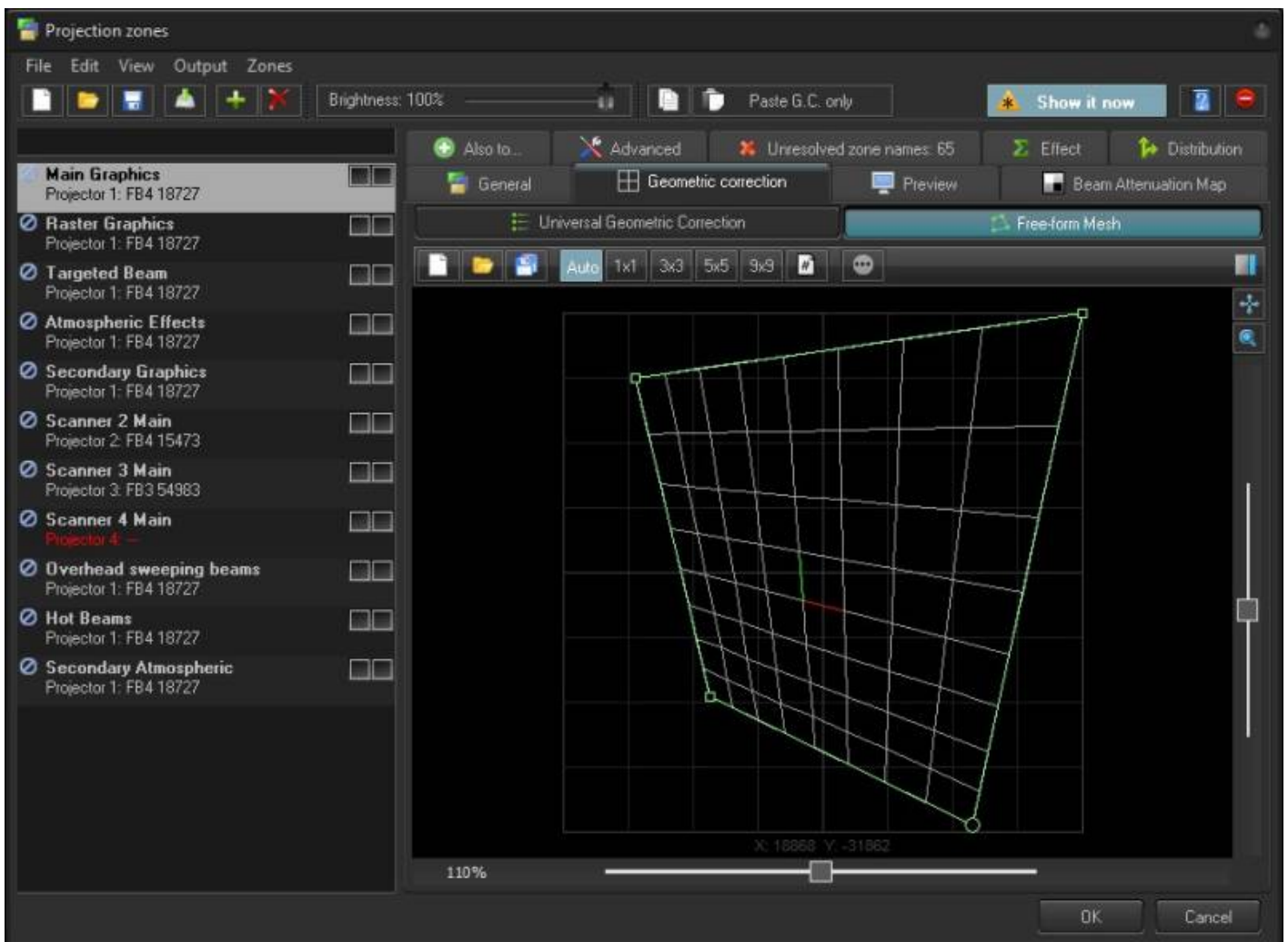
To use the **Free-form Mesh** tool, click on the Free-form Mesh tab and click and drag one of the “dots” to change the geometry of the mesh. You have many options for the level of control you want in adjusting the mesh’s geometry. Each option will give you more or less “dots” (i.e. change points) on the grid. The more “dots”, the more detailed changes you can make to the mesh grid. There is a Reset button

available if needed. The Mesh mode is very helpful if you need to overlay output from one projection zone on top of another. It also helpful if you need to connect zones side by side using the “Also To” function.

Hint: We recommend to start with the most simple mesh mode (1×1) and setup the corners. After that go to 3×3 and adjust center and linearity of the boundary lines. If this is not enough, go to 5×5 and adjust further. We do not recommend starting from the 5×5 or 9×9 modes.

~~NOTE: During development, we tested what would happen if we were to use the Universal Geometric Correction Settings together with the Mesh. Our conclusion is that these do not work well together, and can lead to confusion. The main advantage of the Mesh, is that you control the points directly, without the need for additional corrections.~~

UPDATE: Geometric and mesh can be used together, it is recommended to geometric correct around the object you need to mesh to first, and then use the mesh, this will give you more resolution to work with when using the mesh. If you intend to automesh, its probably best to ignore geometric correction except for possibly making the full size a little smaller, so its easier to nudge the whole mesh up and down if the projector shifts. Additionally, you can move mesh points using arrow keys, and hold shift and control for higher resolutions of movements with arrow keys to get finer control.



Preview Window Appearance

The **Preview Window Appearance** tool allows you to adjust the appearance of a zone in your preview window.

NOTE: It is possible to specify a Preview Window Appearance for each projection zone, and this preview window's appearance is independent of the laser output - So master size, position and geometric correction do not affect the preview window.

For each zone, **the Preview image's size and position** can be adjusted. You can also specify whether the preview for that zone should be normal laser graphics, or audience scanning beam effects.

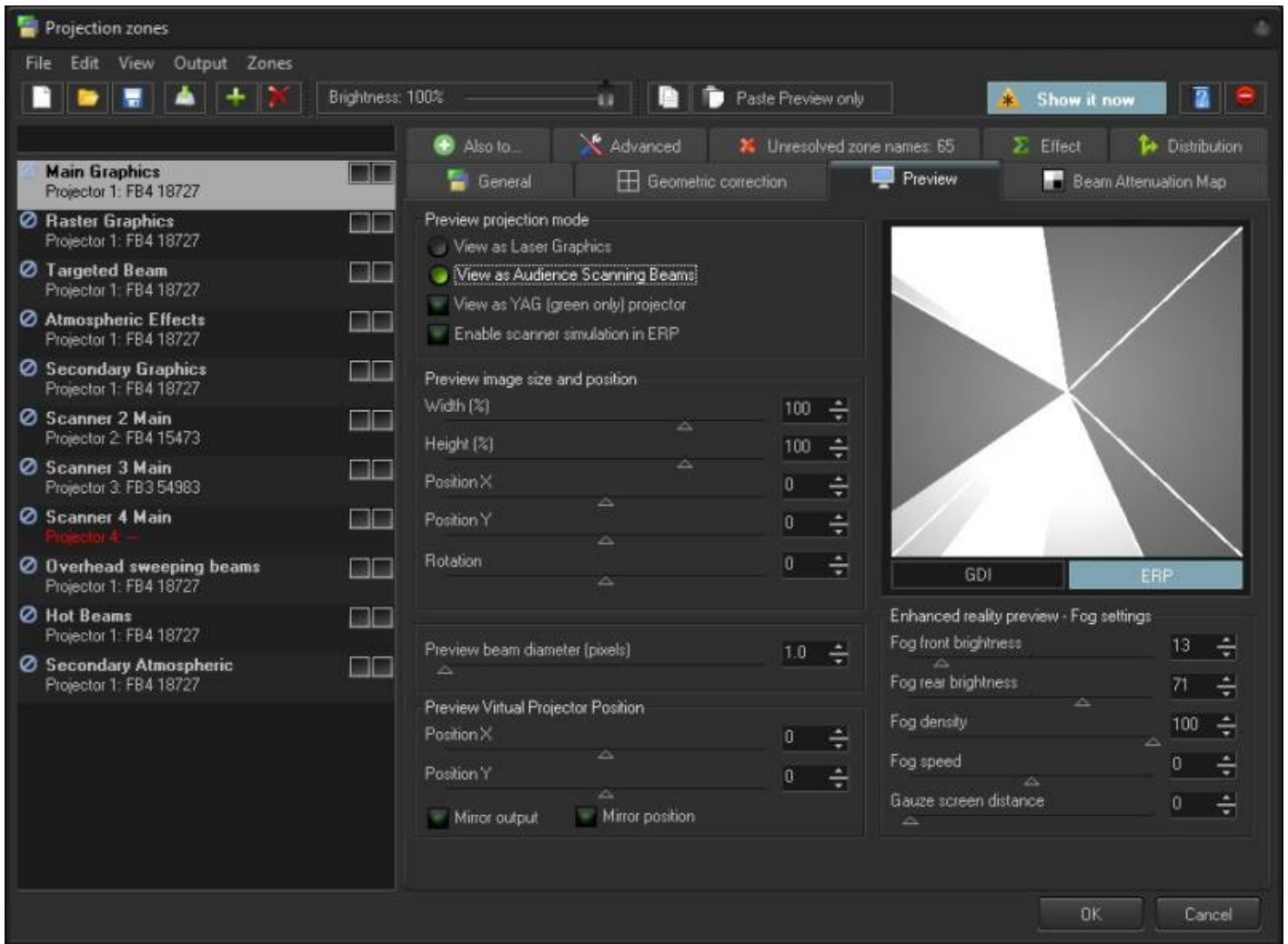
If you specify that the preview should be **Audience Scanning Beams**, you will see a few more options. You can control the vanishing point created by the actual projector position (Position X, Position Y sliders). You can also choose whether or not to mirror the output and the position in the preview window.

You would mirror the output and position when you are sending the output of a single FB3 to multiple projectors at either side of a stage. When this is selected, the preview window automatically duplicates and mirrors the output even though there is only one signal source for both projectors.

There are also settings for Enhanced Reality preview that adjust virtual fog levels and distance for a simulated scrim or gauze screen.

NOTE: With all of this flexibility, you can adjust the preview window for each zone to truly simulate what the show will look like in the final venue.

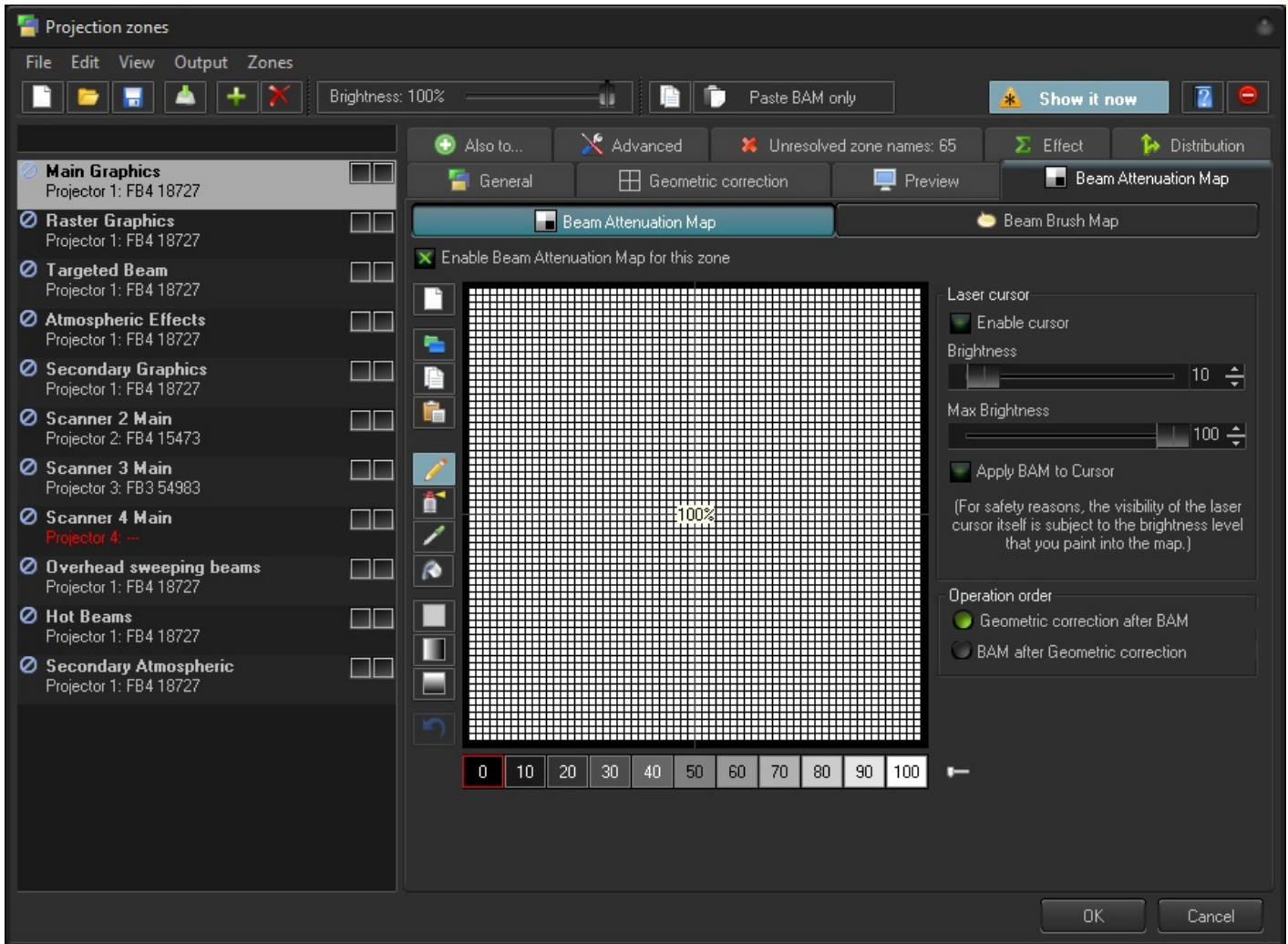
In BEYOND 5.2 and later you can choose to use preview settings as your visualization stream in the configuration window.



The Beam Attenuation Map (BAM for short)

The **Beam Attenuation Map** allows you to control the brightness of a laser projector over the entire projection zone that it will correspond to, and it also allows non-uniform brightness maps. You can see a quick tutorial video about the BAM here: <https://youtu.be/JQnQYPq5WzU?t=178>

The **Beam Attenuation Map** is a 64 by 64 “pixel” brightness control map. Each pixel can be set to any brightness level from 0 to 100%. Rudimentary tools are provided to sample a brightness level in the map, fill the entire map with the selected brightness level, fill a rectangular area with the selected brightness level and freehand-draw brightness levels into the map. Additional tools allow you to draw a gradient level of attenuation so the brightness of the BAM varies between two different attenuation levels.

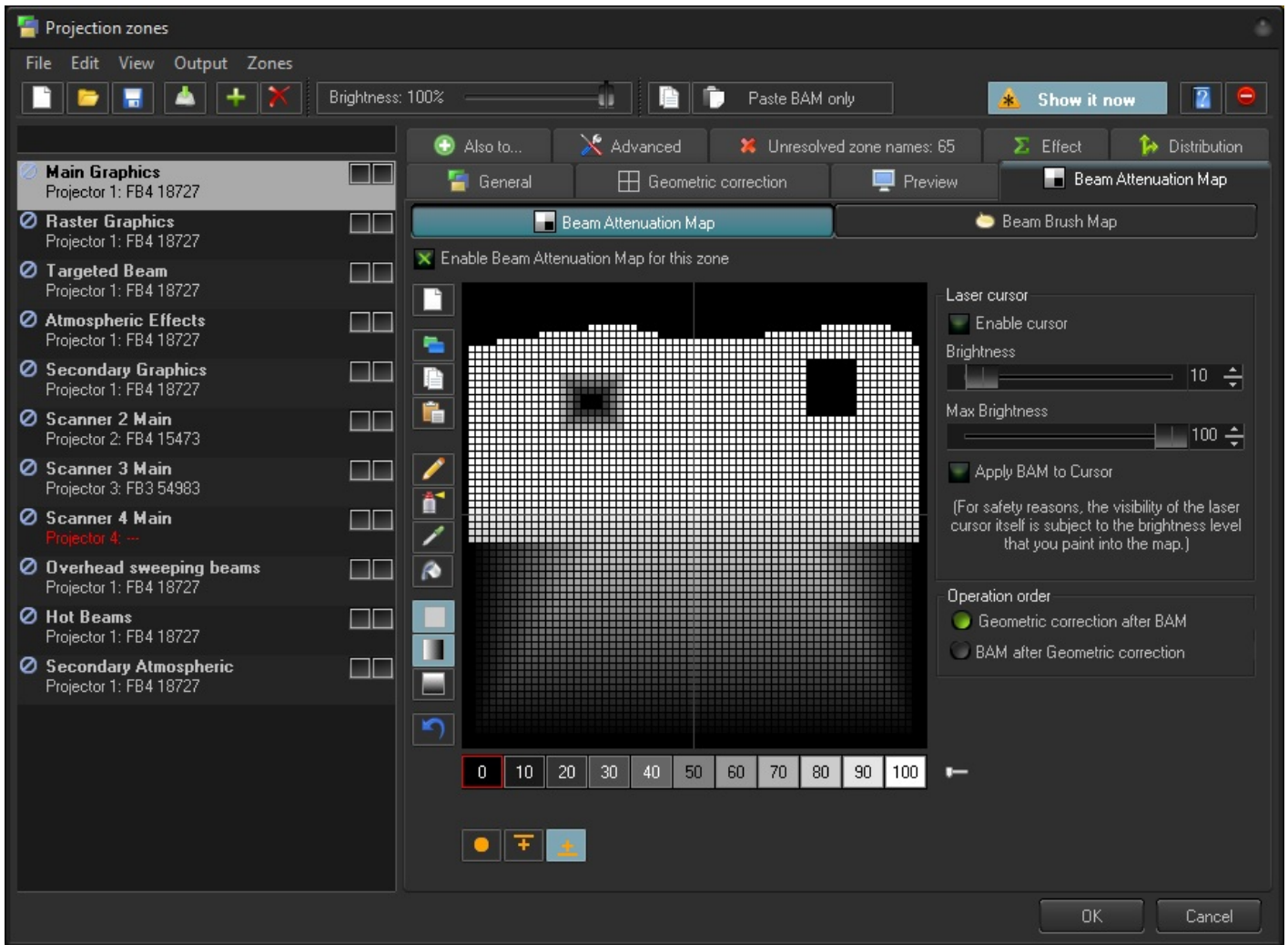


Once you set a BAM for one zone you can copy these BAM settings to be applied to multiple other zones and have a bitmap screen shot of your drawn BAM copied to the clipboard, to be pasted into a document for possible use in a Laser Projector Product Report.

The **Beam Attenuation Map** can be used for graphics, atmospheric and beam effects.

Below is an example of a Beam Attenuation Map used for laser graphics.

One common use for the BAM, as it related to graphics, would be to prevent scanning above or below a certain point. For example, lets say that you were projecting laser graphics over a standard television screen with a 4:3 aspect ratio. Since the laser typically has a 1:1 aspect ratio, this would mean that the graphics could possibly scan above the top or below the bottom of the screen. You can use the **Beam Attenuation Map** to make sure that the brightness at the top and bottom of the screen are zero. Similarly, the window-clipping action can be done by means of the Effect tab.



Example Beam Attenuation Map used for audience scanning

Another common use would be to reduce the brightness below the horizon to a level that would be more pleasing for people in an audience scanning area. This can easily be done by selecting a reduced brightness level, and filling the rectangular area below the horizon.

Example Beam Attenuation Map use with targeted beam effects

Another common use would be to protect certain areas from hazardous laser exposure or to reduce the brightness in certain areas. When doing beam shows outdoors, it is often necessary to ensure certain areas (such as the windows in certain buildings) won't be exposed. Using the rudimentary drawing tools, it is possible to "carve out" areas from the projected area.

Tools to create your BAM

There are a few tools included to create your map

- Pencil Tool - this allows you to draw single pixels at a time
- Spraycan Tool - Soft and brushed application of brightness
- Eyedropper Tool - Allows you to check the brightness of a pixel
- Rectangle Tool - Allows you to square highlight and apply brightness

- Rectangle Gradient Tool Horizontal - Gradients between one end and other horizontally.
- Rectangle Gradient Tool Vertical - Gradients between one end and the other vertically.

Extra Options in gradients

- Color Override
- Highest Brightness Wins
- Lowest Brightness Wins
- Gradient
- Gradient symmetrical
- Gradient 4 side

Laser Cursor

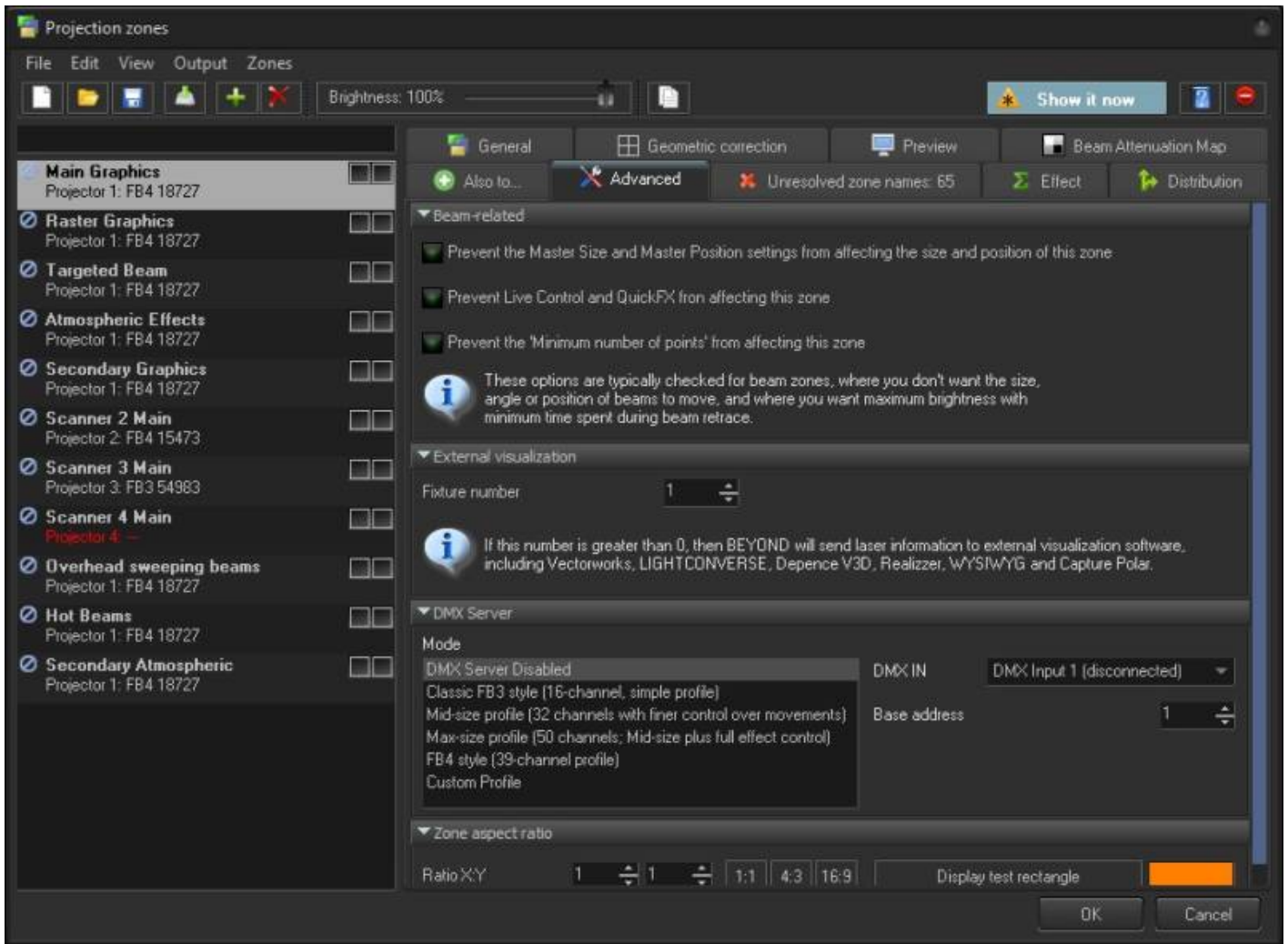
To assist you figure out which pixel to color, you can enable a laser cursor which will project a scanned square where the pixel is to identify the correct spot to color. You can control the brightness of your cursor, and apply your bam to cursor to ensure that the cursor doesn't override.

Operation Order

Select "Geometric Correction after BAM" if you want the bam to move when you move the zone Select "BAM after Geometric Correction" if you want the bam to be over the entire possible zone area and not move when the zone is moved.

The Advanced Tab

his section shows the **Advanced Tab Parameters** for a selected zone, and allows you to adjust them. These are advanced scanning parameters that are particularly well suited for zones used with targeted beam effects.



When the **Prevent master size and master position** check box is checked, it will make it so that the Master Size and Master Position controls in the **Projector Settings** window do not affect the output of this zone.

When the **Prevent Live Control and QuickFX from affecting this zone** check box is checked, it will prevent live control input and quick fx effects from modifying this zone in anyway.

The **Minimum number of points** setting in the **Projector Settings** window can be adjusted to relieve the scanners from trying to scan high duty-cycle which may cause power limiting. Setting the **Minimum number of points** to 200 or higher can actually increase the life of your scanners. However, doing so will mean that if you project less than 200 points, the additional points will be blanked. For beam frames, it is often undesirable to have any unintended blanking at all because such blanking would tend to reduce the power of the display. When the **Prevent minimum number of points** check box is checked, all scanner output will be dedicated strictly to producing laser output and the Minimum number of points setting is ignored.

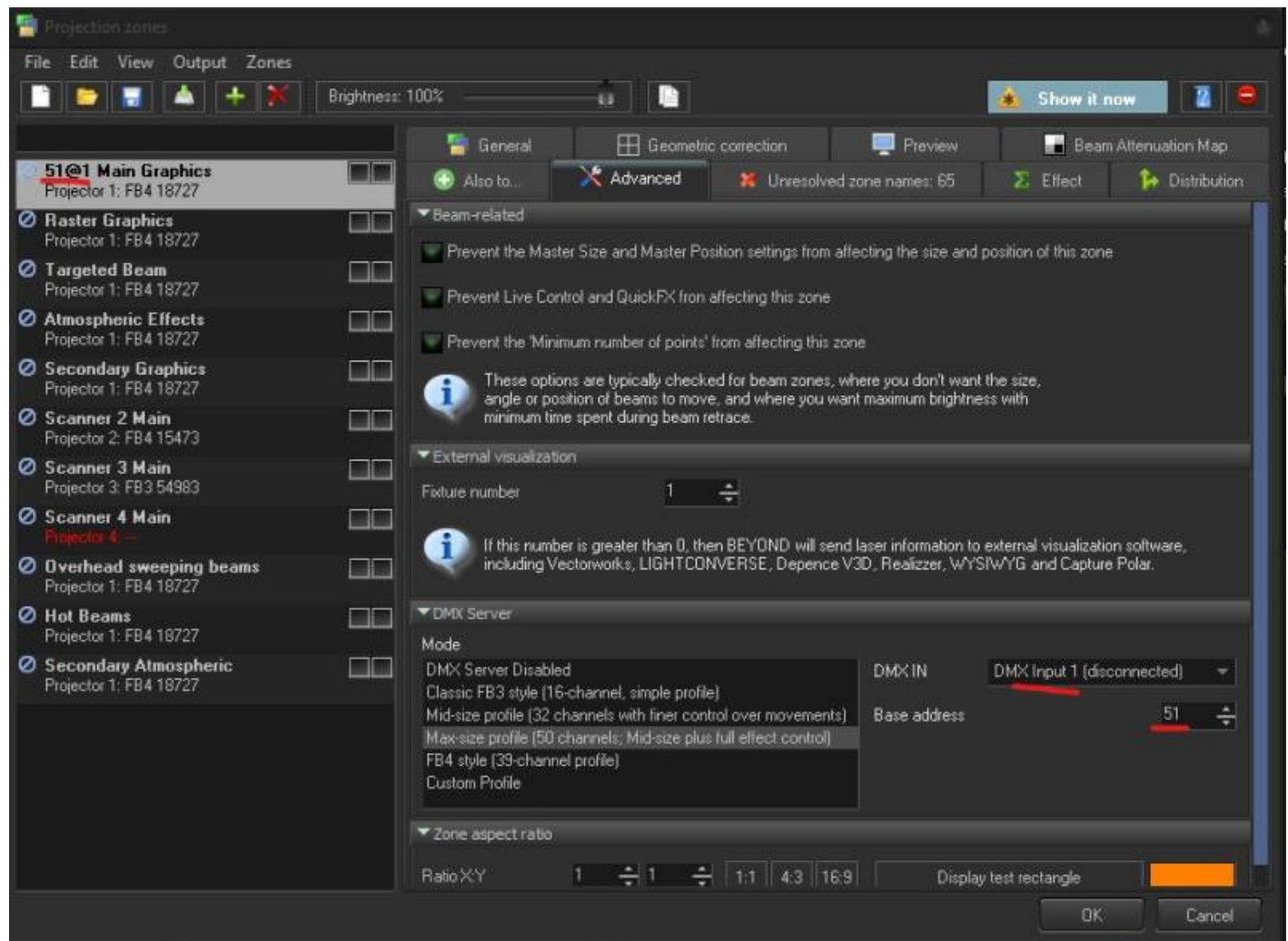
External Visualization

Just like with zones we need to assign a hardware number to specify which projector the zone will route to, we need to assign a digital fixture number for this zone for external visualization, this is that number.

Note: BEYOND will send as many streams as this number is high, so its recommended to only go up as high as you need, and not start at 10 while not using 1-9, as BEYOND will send streams up to the highest even if unused and can cause performance issues and lots of data on the network.

DMX Server

DMX Server is a function to allow DMX control of a zones individually. Allowing for independent control of each zone as a fixture in your console, while maintaining all functionality of BEYOND functions. Most extremely large scale laser shows use this technique. You can select which profile you would like to use, set which dmx input and what channel for that zone, and it will identify the setting in the zone name for your reference.



Zone Aspect Ratio

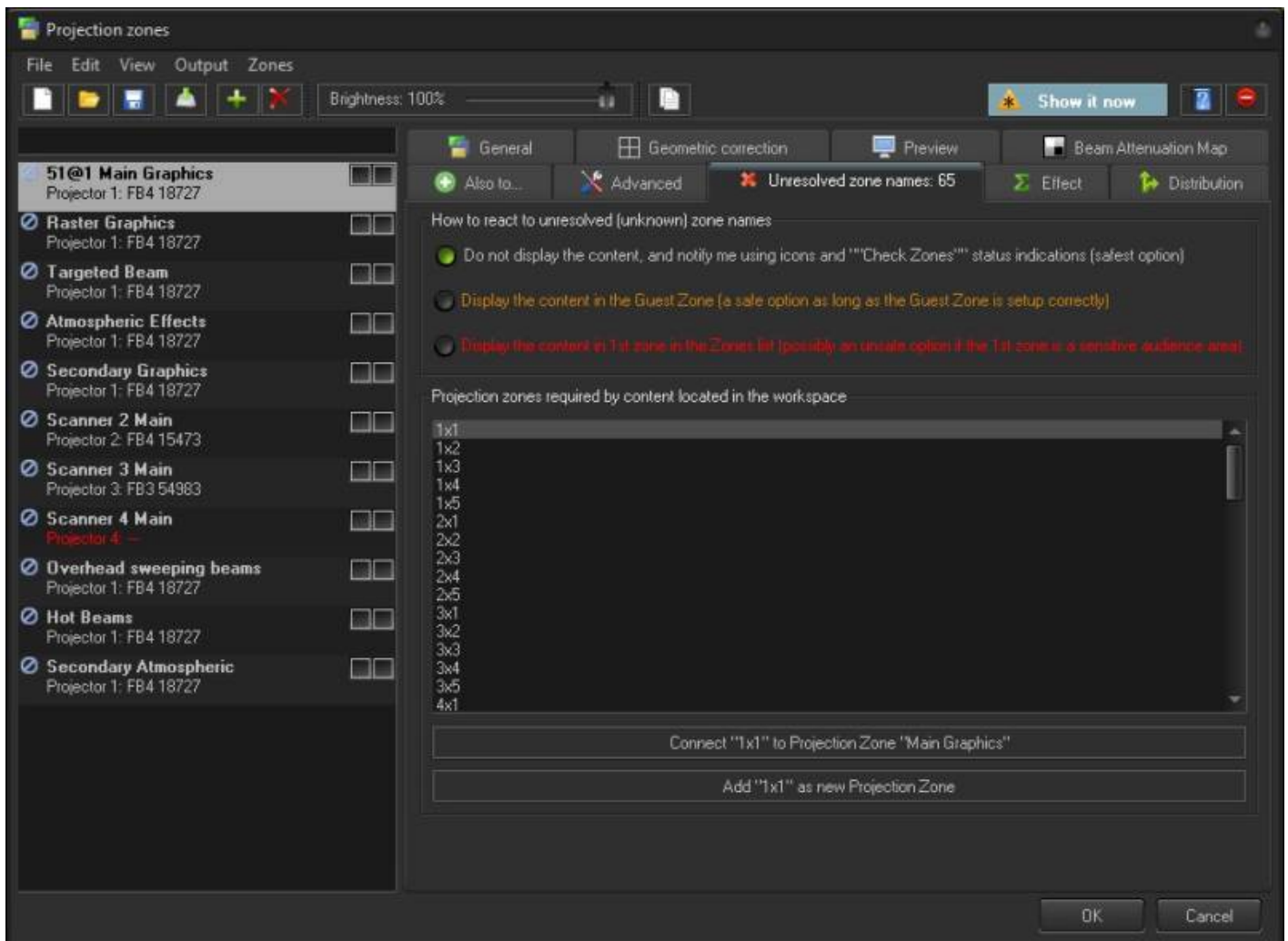
You may use this tool to display a square rectangle of a specific aspect ratio within your zone, this is scaled based on your zone so keep that in mind when using this tool.

External Visualization

Here you can assign a fixture number to the selected Projection Zone for use with an external visualization application such as Realizzer, Capture or Light Converse. The fixture number set here will route laser information to a corresponding fixture number within the external visualization application.

How to Handle Unresolved Zone Names

This is where you can see how many cues or content within your Workspace are being routed to Projection Zones that do not exist. You can also connect old names to the new names or add the old names as secondary names to the currently selected zone.



Effect

Here you can apply an effect to the selected zone so any content played on that zone automatically has

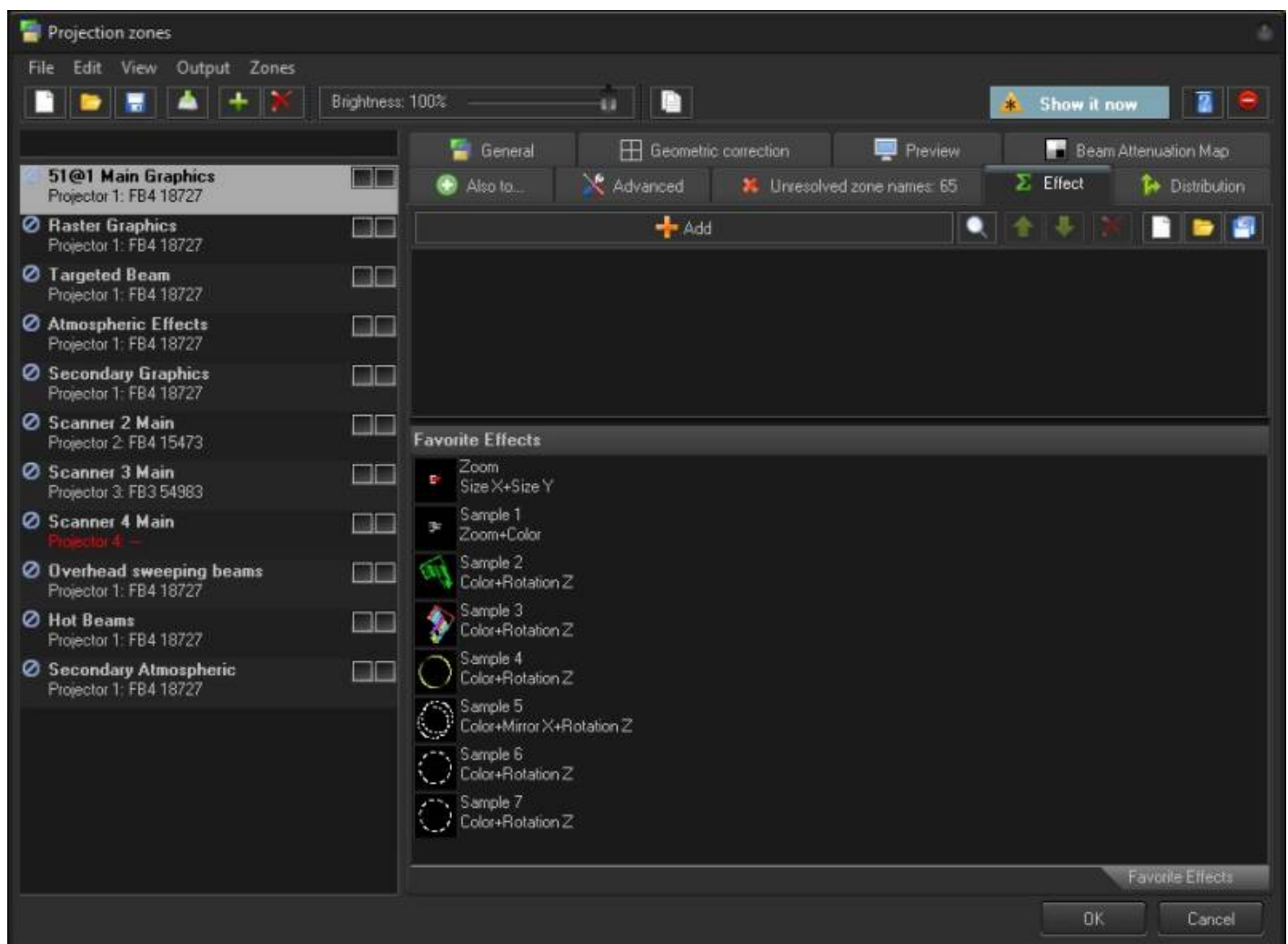
that effect applied to it.

This is not a “live control”. This is not a dynamic setting. This is not an Effect in the classic understanding of BEYOND. So, what does the Effect do? ... It transforms the frames that are projected to this zone and applies an effect to them.

In some cases, you may want add an effect that will modify all frames that go to a certain zone. BEYOND has nice RC key effects, that can work as “smooth” filters.

One more reason for this tool, is for external DMX control of BEYOND. Effect allows you to easily organize external control of Zones via DMX, including User, Oscillating and Key Effects. Each Effect item can be linked to DMX IN by means of the Input option.

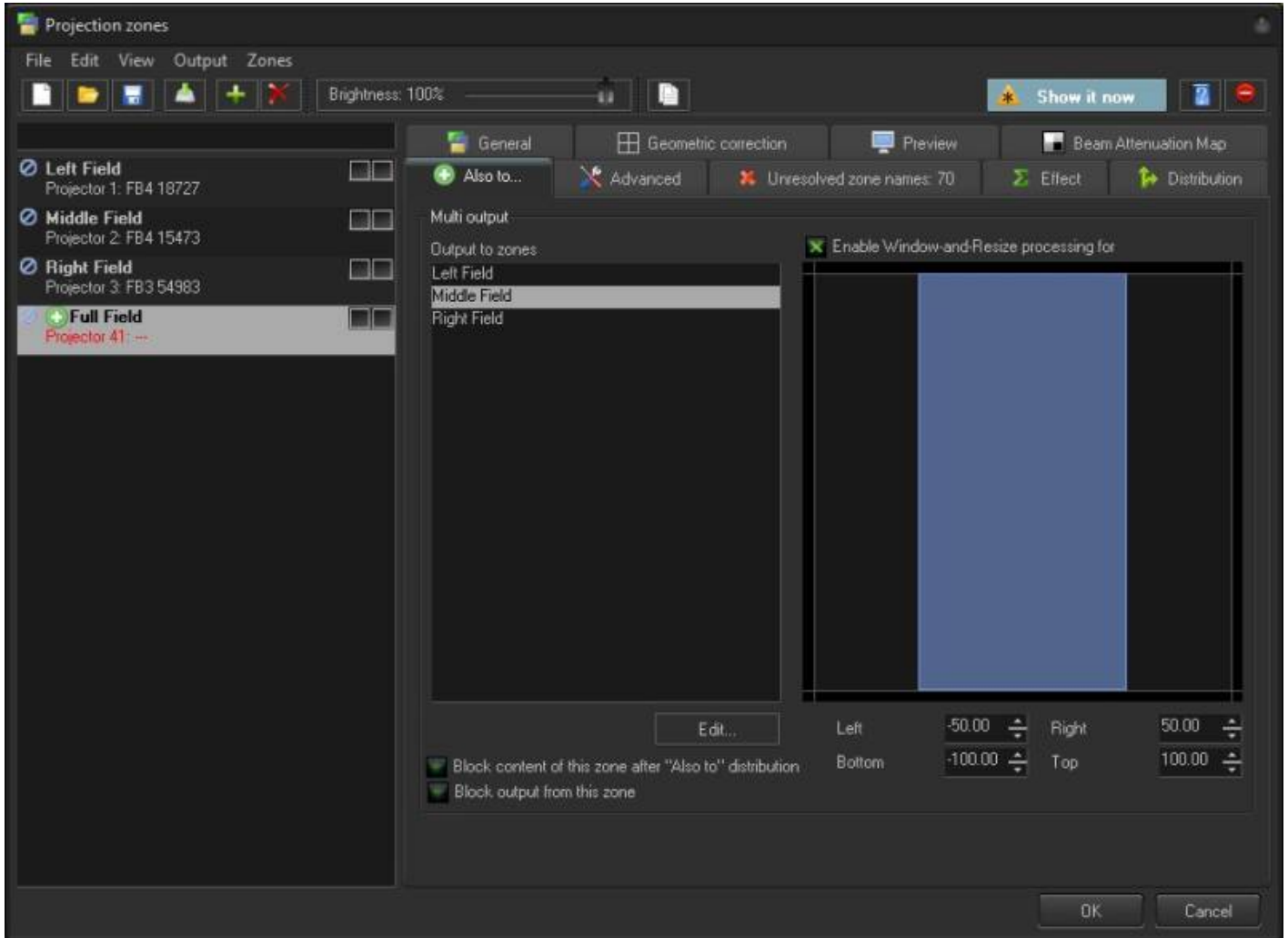
Users may also want to add overall filters to a zone, like delete dark lines to optimize, resamepler to force point counts, and masks to create very precise safety zones over an area.



The “Also To” Feature

“Also To” was designed for two primary purposes

1. Copy the output of a zone to another zone(s). It helps if you need to add projectors to BEYOND that will duplicate some of the previously existing projectors.
2. Create a Zone, that consists of two or more zones. For example, you can create a zone that will use two projectors to display content. You can **Enable Window and Resize** processing so that only certain areas of the selected zone's output are displayed in the Also to routed zone.

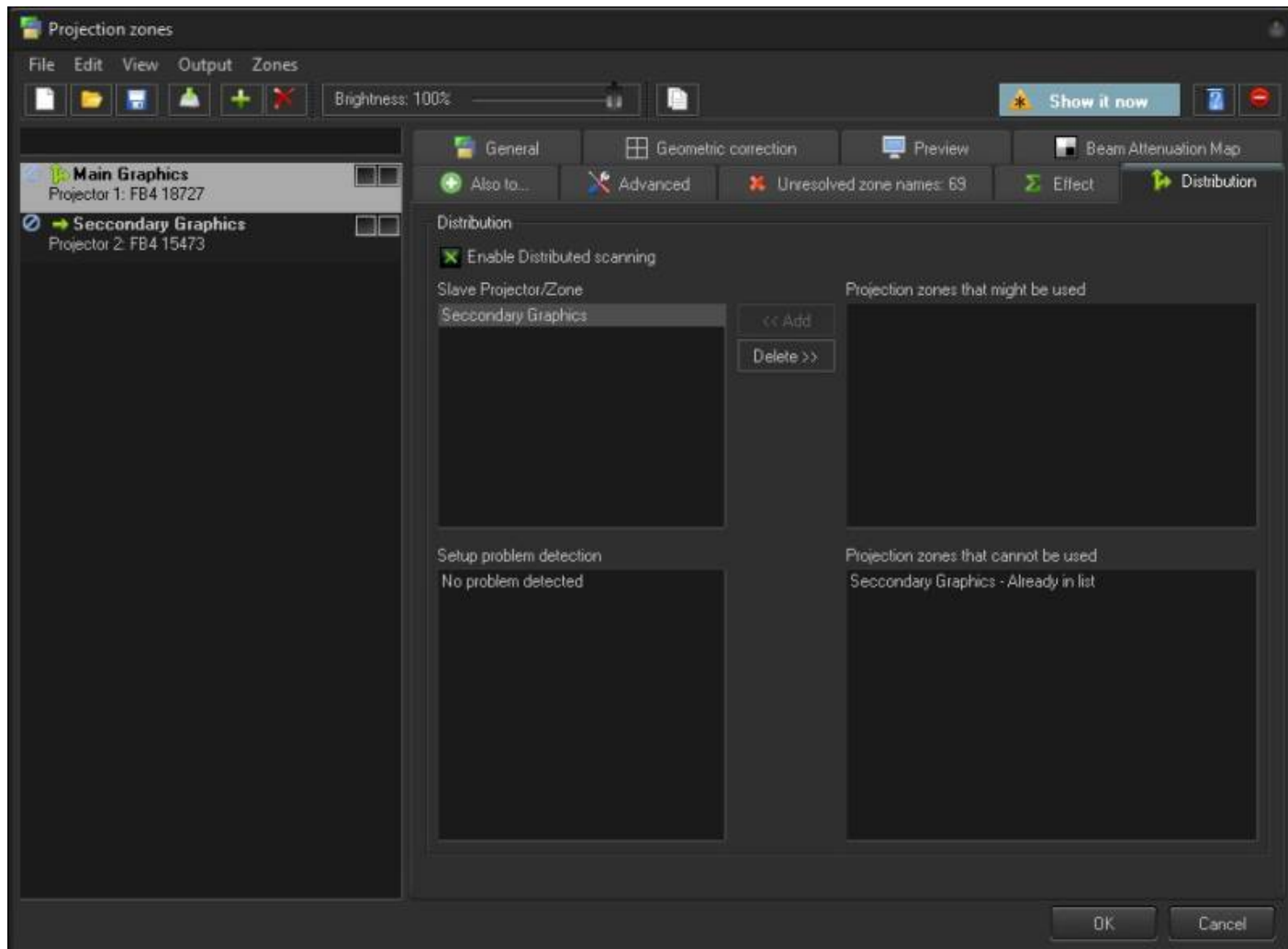


BEYOND calculates the output for each projector independently. This means that each projector has its own time, and the core calculates the frames of time for each projector. This time difference is not visible on a short frame, but it becomes very noticeable on long frames. Window clipping is not a solution for the display of really complex graphics. Results depends on the content.

Distribution

Distributed scanning allows you to use multiple lasers together to create one image, where different parts of the image are scanned by different lasers, increasing the number of points that can be "flickerless" inside a single frame. Distribution can be done with up to 8 lasers together (BEYOND Ultimate) and you can have multiple distributed scanning setups. In Distribution, a primary zone gets the content, and then requests assistance from secondary zones as needed, so if the points in a frame are

not super heavy, it may not always use every laser. Use distributed scanning when projecting graphical content if you are experiencing issues with flicker and detail. If you are experiencing issues with brightness, use Also to instead to stack lasers for brightness.



Note: Because distributed scanning requires very specific timing, you need FB4's to do this, as they actually sync together on the network and distribute the content amongst each other there, and FB3's and QM2000's cannot distributed scan.

Sending Cues to a Specific Projection Zone

Projection Zones can be specified within BEYOND cues, so that when you trigger a cue, it will automatically be sent to one or more specific zones. This is the simplest scenario and we recommend to start from it. See the help topic about **Cue Properties** for more information.

From:
<https://wiki.pangolin.com/> - **Complete Help Docs**

Permanent link:
https://wiki.pangolin.com/doku.php?id=beyond:projection_zones-new&rev=1698289643

Last update: **2023/10/26 05:07**

