

Projector Settings

In our ecosystem, it's important to set the projector settings in BEYOND and Quickshow to ensure your laser is performing optimally. However, we understand it can be difficult to get these settings right, especially if you are new!

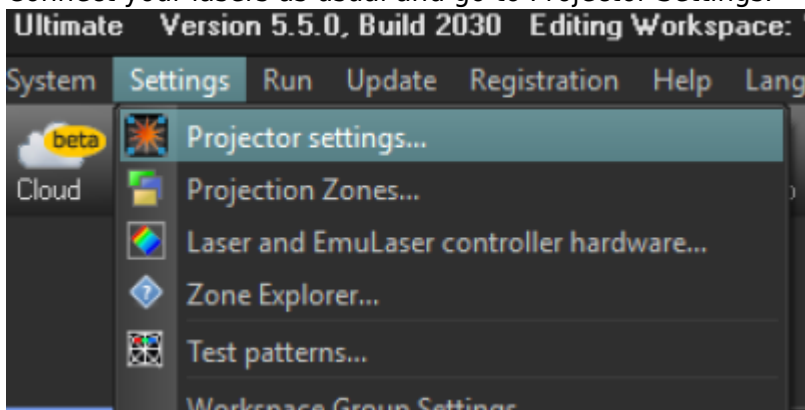
Below, we provide some good projector settings files for your projectors which will protect their longevity, allow them to operate at their best, and reveal colors you never knew existed!

These files should work great for all new and existing lasers purchased from Pangolin. However, as lasers age their colors will shift a bit, so the color tune may need some adjustment for older units.

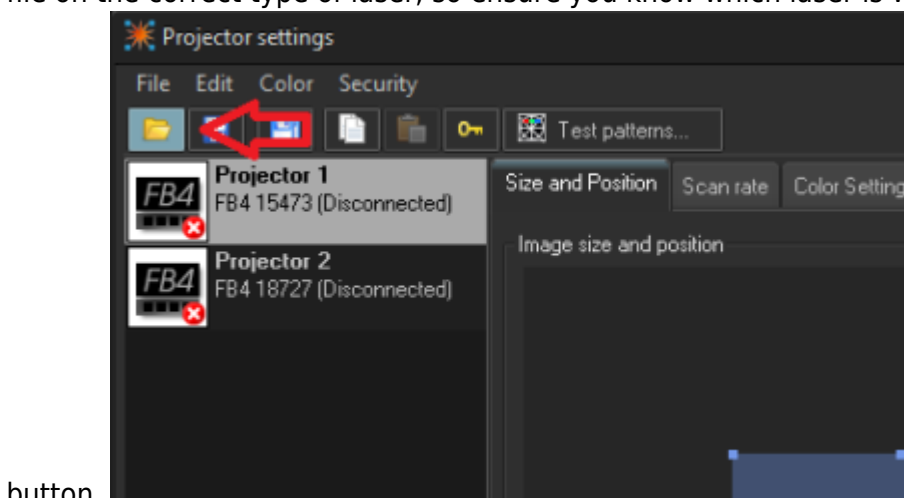
How to use these files

To utilize these, find your exact projector down below, then download the related projector settings file. Each model and wattage of projector has its own settings file, so make sure to get the correct one.

Connect your lasers as usual and go to Projector Settings.



Select the projector you want to upload the settings to. It's important to use the correct projector settings file on the correct type of laser, so ensure you know which laser is which. Once selected, click the open



button.

Load the correct file.

Then, once you press OK on the projector settings window, this install of BEYOND will remember these settings for this specific laser whenever you connect it.

Unity Lasers

Raw Series

Raw 1.7 DMX



- Size: 95×95
- Scanrate: 28kpps
- Color Shift: 4
- Color Tune: Advanced, Natural White, 30° hues tuned.
- Anchors: Not Adjusted

Download:

Raw 3 DMX/FB4



- Size: 95×95
- Scanrate: 28kpps
- Color Shift: 4
- Color Tune: Advanced, Natural White, 30° hues tuned.
- Anchors: Not Adjusted

DMX Version Download:

FB4 Version Download:

Raw 5 DMX/FB4



- Size: 95×95
- Scanrate: 28kpps
- Color Shift: 4
- Color Tune: Advanced, Natural White, 30° hues tuned.
- Anchors: Not Adjusted

DMX Version Download:

FB4 Version Download:

Raw 10 DMX/FB4



- Size: 95×95
- Scanrate: 30kpps
- Color Shift: 4
- Color Tune: Advanced, Natural White, 30° hues tuned.
- Anchors: Not Adjusted

DMX Version Download:

FB4 Version Download:

Elite Pro IP54 Series

Elite 3 Pro

Elite 5 Pro



- Size: 95×95
- Scanrate: 30kpps
- Color Shift: 4
- Color Tune: Advanced, Natural White, 30° hues tuned.
- Anchors: Not Adjusted

Download:

Elite Pro IP65 Series

Elite 10 Pro IP65



- Size: 95×95
- Scanrate: 30kpps
- Color Shift: 4
- Color Tune: Advanced, Natural White, 30° hues tuned.
- Anchors: Not Adjusted

Download:

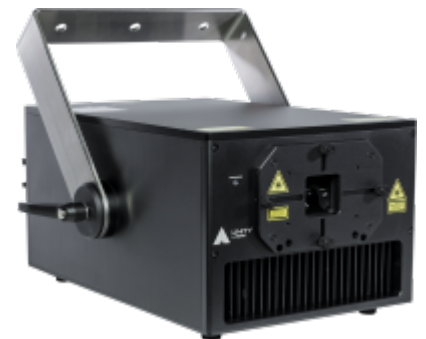
Elite 20 Pro IP65



- Size: 95×95
- Scanrate: 30kpps
- Color Shift: 4
- Color Tune: Advanced, Natural White, 30° hues tuned.
- Anchors: Not Adjusted

Download:

Elite 30 Pro IP65



- Size: 95×95
- Scanrate: 30kpps
- Color Shift: 4
- Color Tune: Advanced, Natural White, 30° hues tuned.
- Anchors: Not Adjusted

Download:

Elite 40 Pro IP65



- Size: 95×95
- Scanrate: 29kpps
- Color Shift: 4
- Color Tune: Advanced, Natural White, 30° hues tuned.
- Anchors: Not Adjusted

Download:

Elite Pro IP65 Series HP

Elite 60 Pro IP65



- Size: 95×95
- Scanrate: 28kpps
- Color Shift: 4
- Color Tune: Advanced, Natural White, 30° hues tuned.
- Anchors: Not Adjusted

Download:

Elite 100 Pro IP65

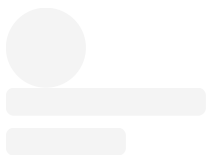


- Size: 95x95
- Scanrate: 27kpps
- Color Shift: 4
- Color Tune: Advanced, Natural White, 30° hues tuned.
- Anchors: Not Adjusted

Download:

Resources for creating your own projector settings

Any user can adjust these settings as they see fit, but its important to know how, below are some tutorials on what you may want to change:



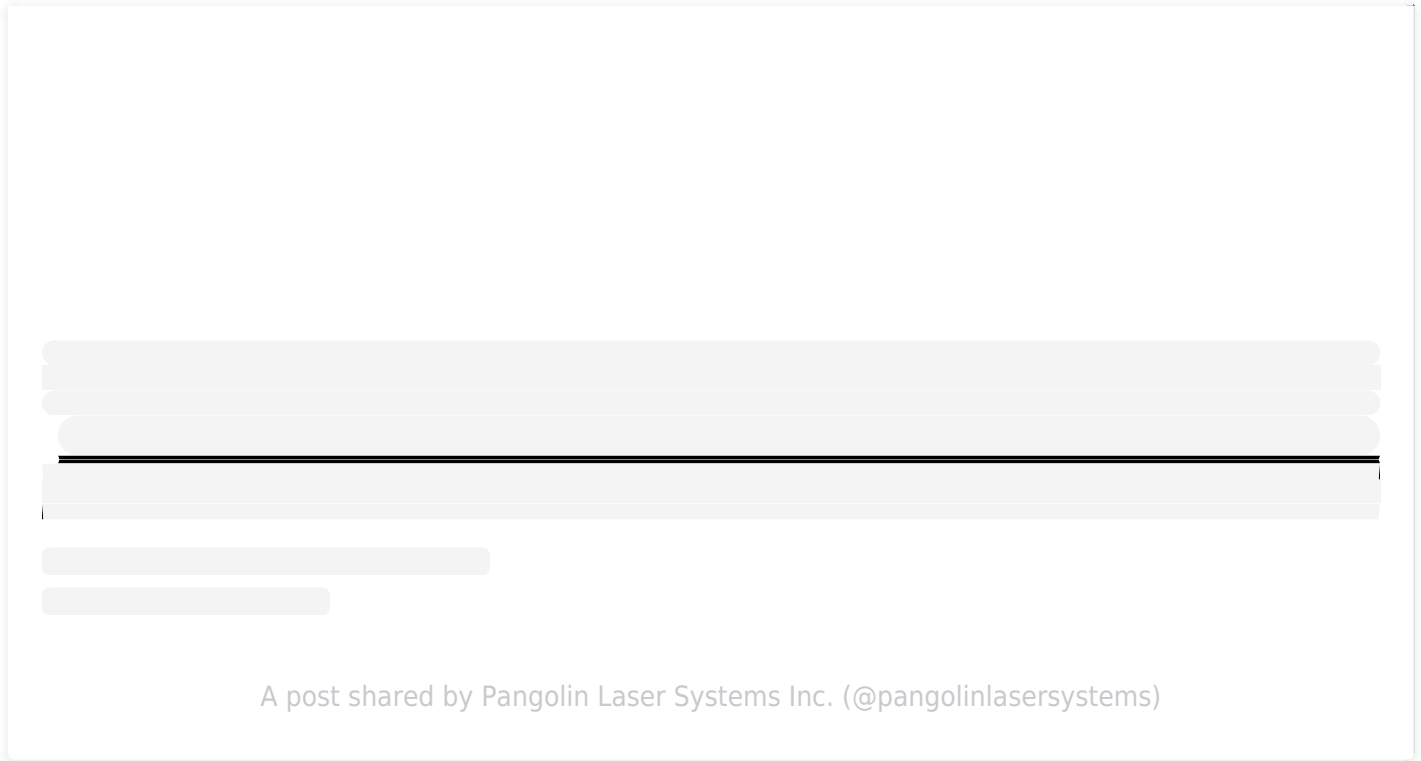
[View this post on Instagram](#)



A post shared by Pangolin Laser Systems Inc. (@pangolinlasersystems)



[View this post on Instagram](#)



[Return to Guided learning](#)

From:
<https://wiki.pangolin.com/> - **Complete Help Docs**

Permanent link:
https://wiki.pangolin.com/doku.php?id=examples:projector_settings&rev=1773764872

Last update: **2026/03/17 17:27**

