

Projector Settings

In our ecosystem, it's important to set the projector settings in BEYOND and Quickshow to ensure your laser is performing optimally. However, we understand it can be difficult to get these settings right, especially if you are new!

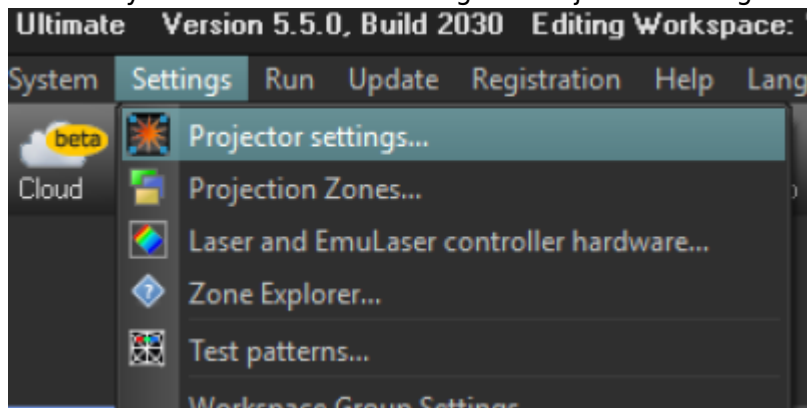
Below, we provide some good projector settings files for your projectors which will protect their longevity, allow them to operate at their best, and reveal colors you never knew existed! If you are using BEYOND, you can download the correct file, then assign it to your projector(s) using the process below. If you are using Quickshow, you will not be able to make use of the Advanced Color Tuning. In this case, you can adjust your projector settings yourself to match the recommended size, scan rate, and color shift settings.

These settings should work great for all new and existing lasers purchased from Pangolin. However, as lasers age their colors will shift a bit, so the color tune may need some adjustment for older units. Also, while the advanced color tuning will help each unit fill out its own spectrum, you may notice inconsistencies between projectors if you have multiple, as the diodes can vary from projector to projector. In this case, you can follow the video guides at the bottom to learn how to adjust the tuning yourself. Usually, all that is needed is a slight adjustment to the white balance.

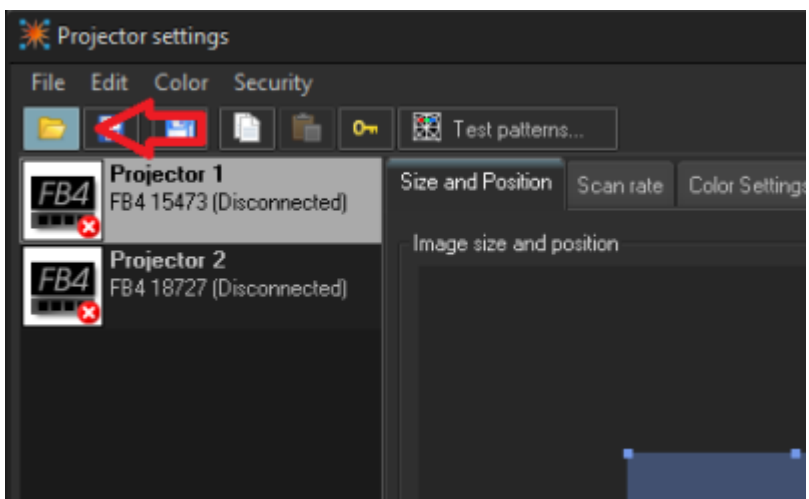
How to use these files

To utilize these, find your exact projector down below, then download the related projector settings file. Each model and wattage of projector has its own settings file, so make sure to get the correct one.

Connect your lasers as usual and go to Projector Settings.



Select the projector you want to upload the settings to. It's important to use the correct projector settings file on the correct type of laser, so ensure you know which laser is which. Once selected, click the open



button.

Load the correct file.

Then, once you press OK on the projector settings window, this install of BEYOND will remember these settings for this specific laser whenever you connect it.

Unity Lasers

Raw Series

Raw 1.7 DMX



- Size: 95×95
- Scanrate: 28kpps
- Color Shift: 4
- Color Tune: Advanced, Natural White, 30° hues tuned.
- Anchors: Not Adjusted

[Download now](#)

Raw 3 DMX/FB4



- Size: 95×95
- Scanrate: 28kpps
- Color Shift: 4
- Color Tune: Advanced, Natural White, 30° hues tuned.
- Anchors: Not Adjusted

DMX Version: [Download](#)

FB4 Version: [Download](#)

Raw 5 DMX/FB4



- Size: 95×95
- Scanrate: 28kpps
- Color Shift: 4
- Color Tune: Advanced, Natural White, 30° hues tuned.
- Anchors: Not Adjusted

DMX Version [Download now](#)

FB4 Version [Download now](#)

Raw 10 DMX/FB4



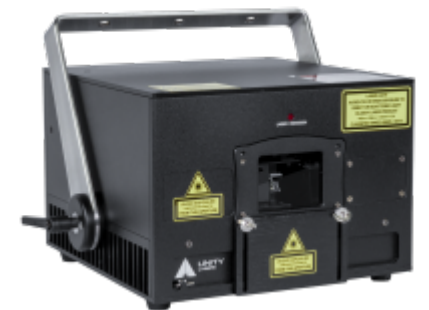
- Size: 95×95
- Scanrate: 30kpps
- Color Shift: 4
- Color Tune: Advanced, Natural White, 30° hues tuned.
- Anchors: Not Adjusted

DMX Version Download:

FB4 Version Download:

Elite Pro IP54 Series

Elite 3 Pro



- Size: 95×95
- Scanrate: 30kpps
- Color Shift: 4
- Color Tune: Advanced, Natural White, 30° hues tuned.
- Anchors: Not Adjusted

Download:

Elite 5 Pro



- Size: 95×95
- Scanrate: 30kpps
- Color Shift: 4
- Color Tune: Advanced, Natural White, 30° hues tuned.
- Anchors: Not Adjusted

Download:

Elite Pro IP65 Series

Elite 10 Pro IP65



- Size: 95×95
- Scanrate: 30kpps
- Color Shift: 4
- Color Tune: Advanced, Natural White, 30° hues tuned.
- Anchors: Not Adjusted

Download:

Elite 20 Pro IP65



- Size: 95×95
- Scanrate: 30kpps
- Color Shift: 4
- Color Tune: Advanced, Natural White, 30° hues tuned.
- Anchors: Not Adjusted

Download:

Elite 30 Pro IP65



- Size: 95×95
- Scanrate: 30kpps
- Color Shift: 4
- Color Tune: Advanced, Natural White, 30° hues tuned.
- Anchors: Not Adjusted

Download:

Elite 40 Pro IP65



- Size: 95×95
- Scanrate: 29kpps
- Color Shift: 4
- Color Tune: Advanced, Natural White, 30° hues tuned.
- Anchors: Not Adjusted

Download:

Elite Pro IP65 Series HP

Elite 60 Pro IP65



- Size: 95×95
- Scanrate: 28kpps
- Color Shift: 4
- Color Tune: Advanced, Natural White, 30° hues tuned.
- Anchors: Not Adjusted

Download:

Elite 100 Pro IP65



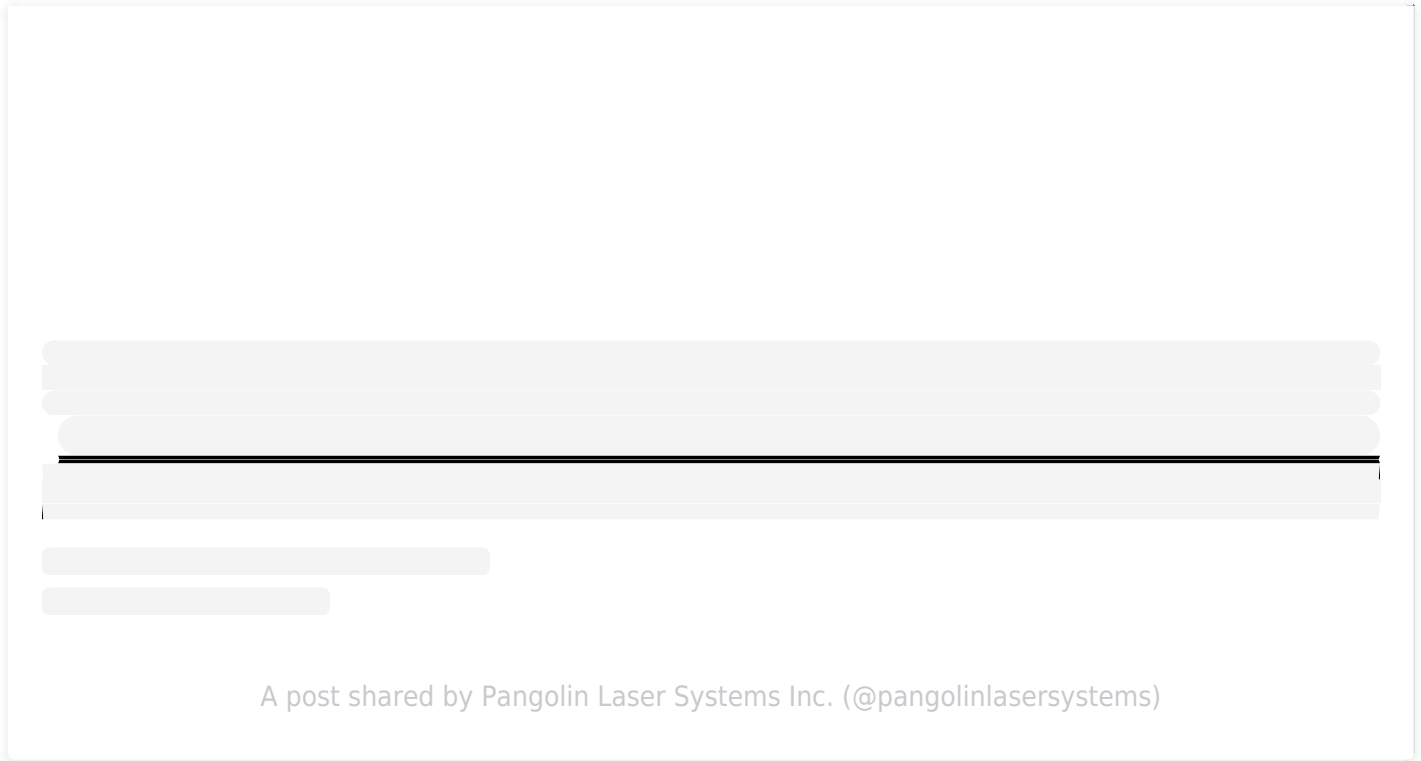
- Size: 95×95
- Scanrate: 27kpps
- Color Shift: 4
- Color Tune: Advanced, Natural White, 30° hues tuned.
- Anchors: Not Adjusted

Download:

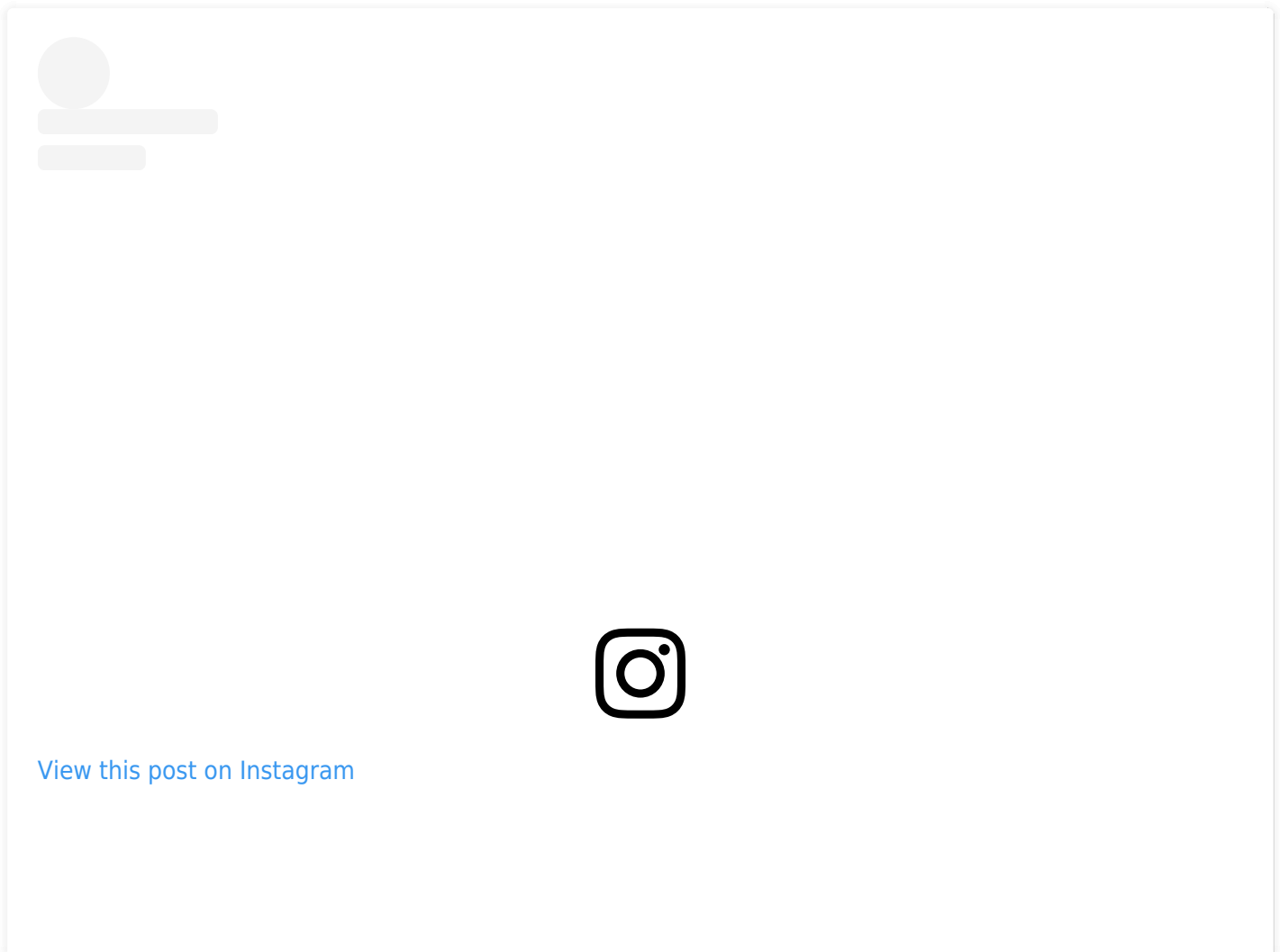
Resources for creating your own projector settings

Any user can adjust these settings as they see fit, but it's important to know how. Below are some tutorials on what you may want to change:

[View this post on Instagram](#)



A post shared by Pangolin Laser Systems Inc. (@pangolinlasersystems)



[View this post on Instagram](#)

[Redacted content]

A post shared by Pangolin Laser Systems Inc. (@pangolinlasersystems)

[Return to Guided learning](#)

From:
<https://wiki.pangolin.com/> - **Complete Help Docs**

Permanent link:
https://wiki.pangolin.com/doku.php?id=examples:projector_settings&rev=1773851261

Last update: **2026/03/18 17:27**

