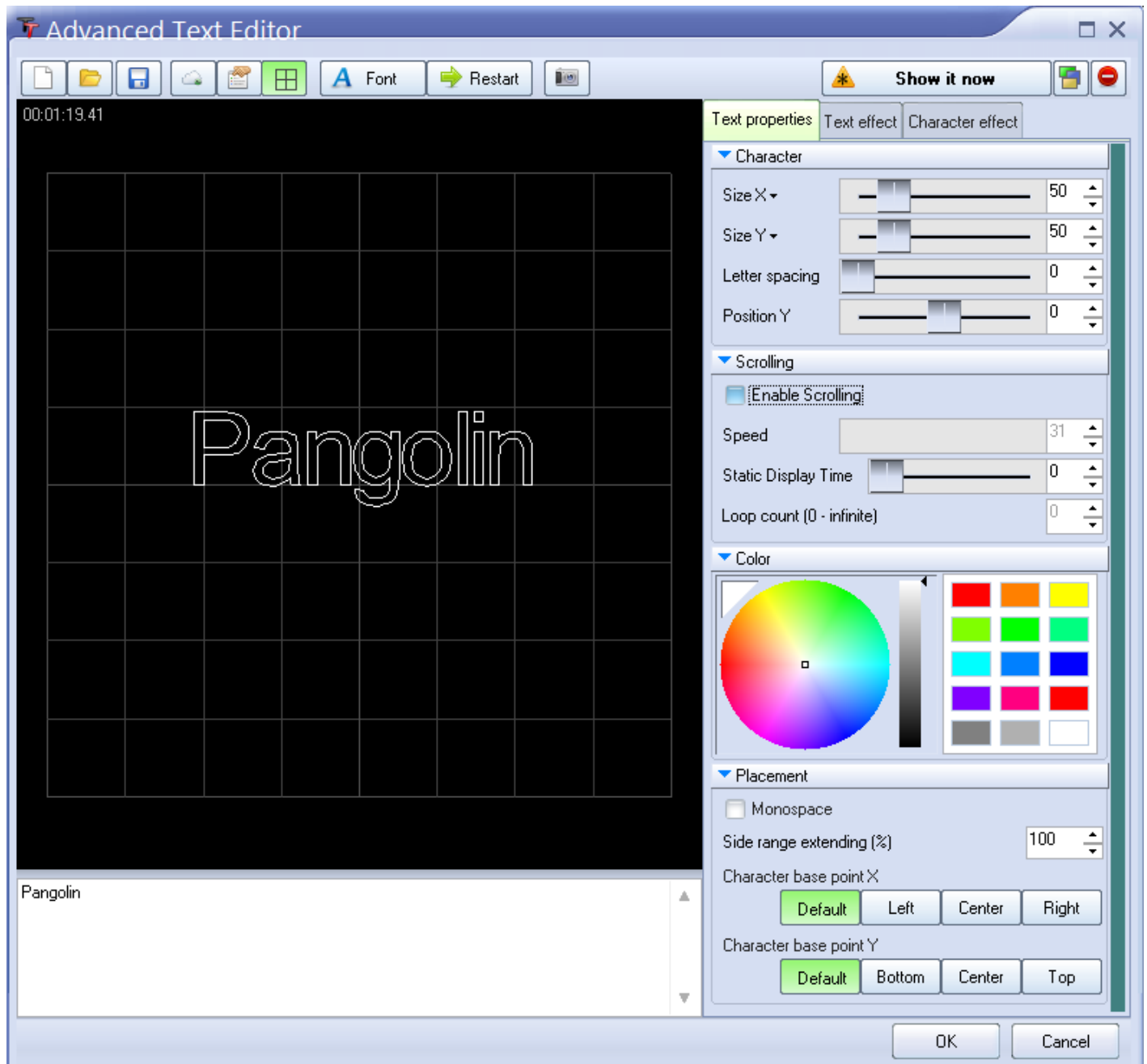


Advanced Text editor

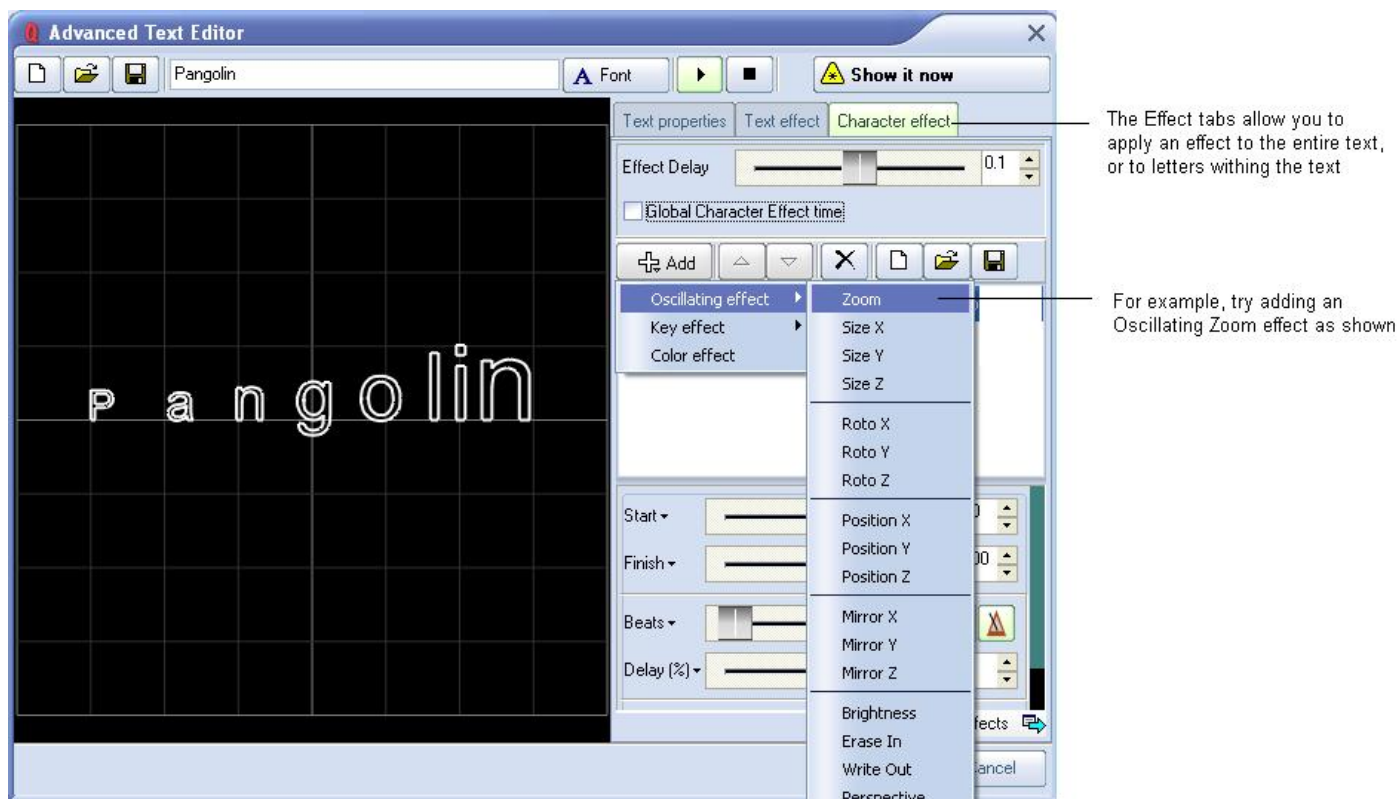
In addition to the [QuickText](#) feature, QuickShow also includes an Advanced Text editor capable of doing far more intricate work. The main window of the Advanced Text editor is shown below, along with an explanation of the main controls.



Applying effects to the entire text image, or to individual

characters

The Advanced Text Editor allows you to apply an effect to the entire text image, or to individual characters within the text image. When using the Character effect tab, it's easy to create effects which are particularly dramatic. With just a few mouse clicks, it is possible to make text that automatically waves and grooves to the beat of the music.



See Also

- [Advanced Tools overview](#)

[Return to index](#)

From:
<https://wiki.pangolin.com/> - **Complete Help Docs**

Permanent link:
https://wiki.pangolin.com/doku.php?id=quickshow:advanced_text_editor&rev=1570550157

Last update: **2020/06/11 19:22**

