

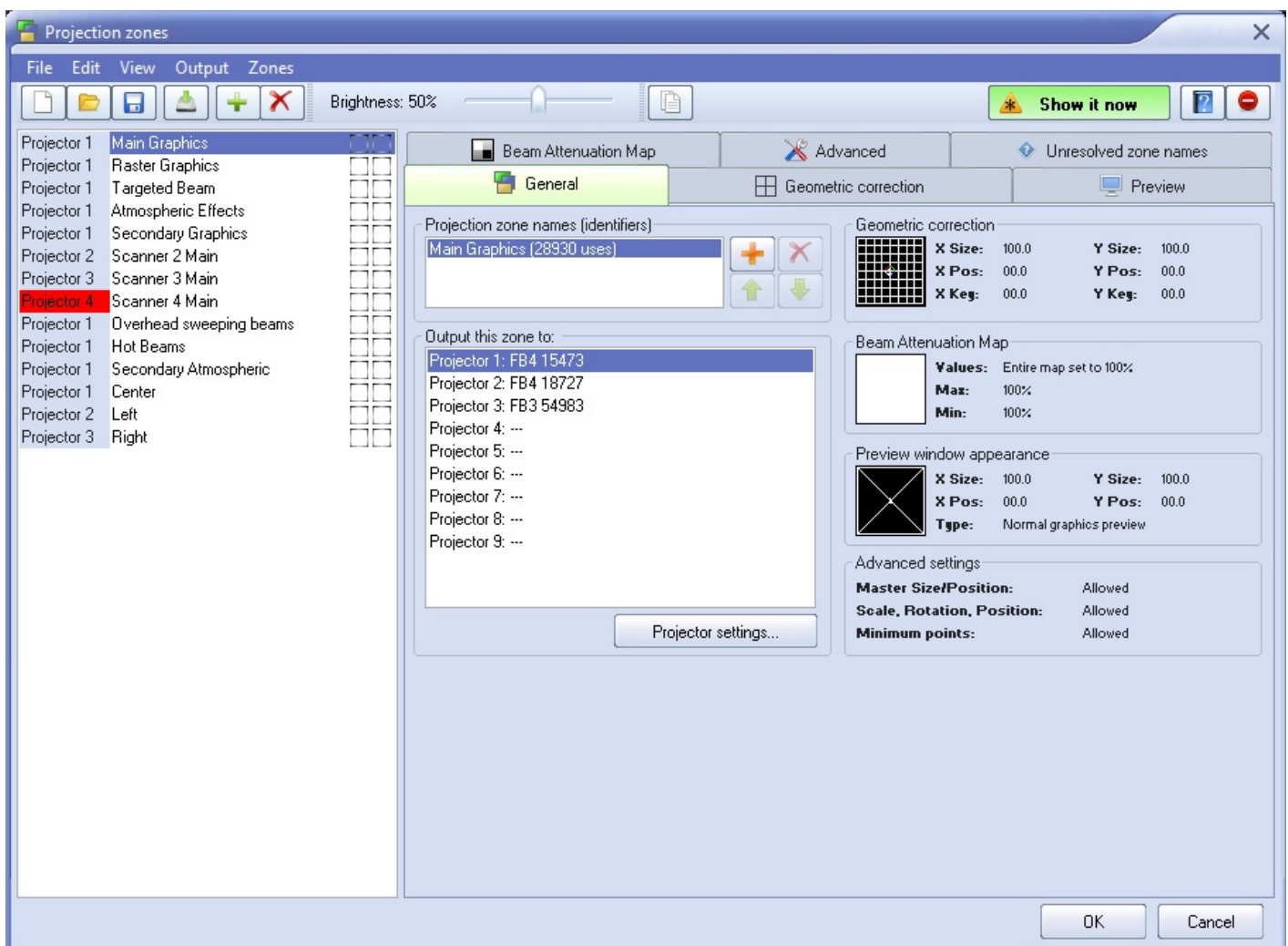
Projection Zones

(only recommended for Advanced users)

QuickShow includes Pangolin's exclusive ILDA-Award-winning **Projection Zones** technology, which allows QuickShow to access up to 30 separate projection areas (zones) either from a single laser projector, or up to nine laser projectors.

Projection Zones combine a scanner selection with **Geometric Correction** for that particular zone, along with the **Preview** Window Appearance for that zone and a **Beam Attenuation Map** that can control the brightness in that particular zone.

The **Projection Zones** window is shown below.



There are 30 projection zones which can be selected on the left side of the window. When you click on a zone in the left side, the tabs on the right allow you to view and adjust the parameters for each projection zone. To view and adjust the parameters, click on the **Geometric Correction**, **Preview**, **Beam Attenuation Map** or **Advanced** tab.

Projection zone name

The area toward the top of the General tab allows you to specify a **Projection Zone Name**. Since there are 30 zones, you should give a descriptive name to each zone such as “Main Graphics” or “Scanner 2 Beam zone”.

Scanner(projector) Output section

The next section, labeled **Output this zone** to allows you to indicate the scanner (projector) that will be used for that zone, and also to adjust the parameters for that scanner. This is how you indicate which scanner will be used for each zone. Pressing the “Projector settings” button will display the Projector Settings window

Test pattern control section

Two columns of check-boxes to the right of the **Projection Zone Name** allow to output 2 types of test pattern, and it is possible to project a test pattern on multiple zones simultaneously in this mode. This allows you to adjust geometric correction settings on overlapping scanners.

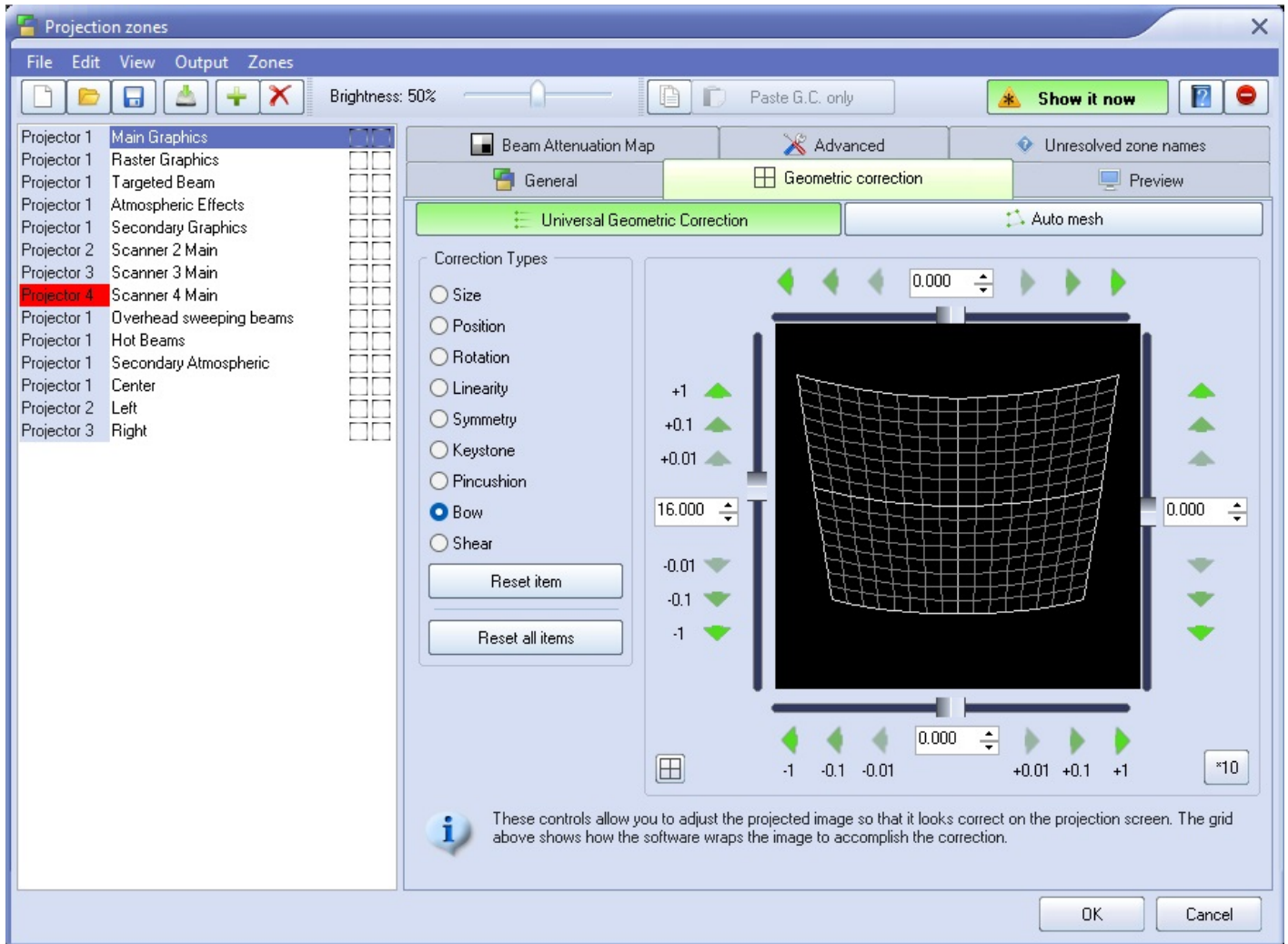
There are two different test patterns available for selection: a Simple test pattern and a Grid test pattern. The simple test pattern has roughly 500 points, and the grid test pattern has roughly 1000 points. Using the simple test pattern when you are projecting multiple test patterns from the same set of scanners will help to reduce flicker.

In addition to the lines that make up the actual test pattern, each test pattern also has an identifying number to help distinguish which test pattern is being projected from which zone.

Geometric Correction section

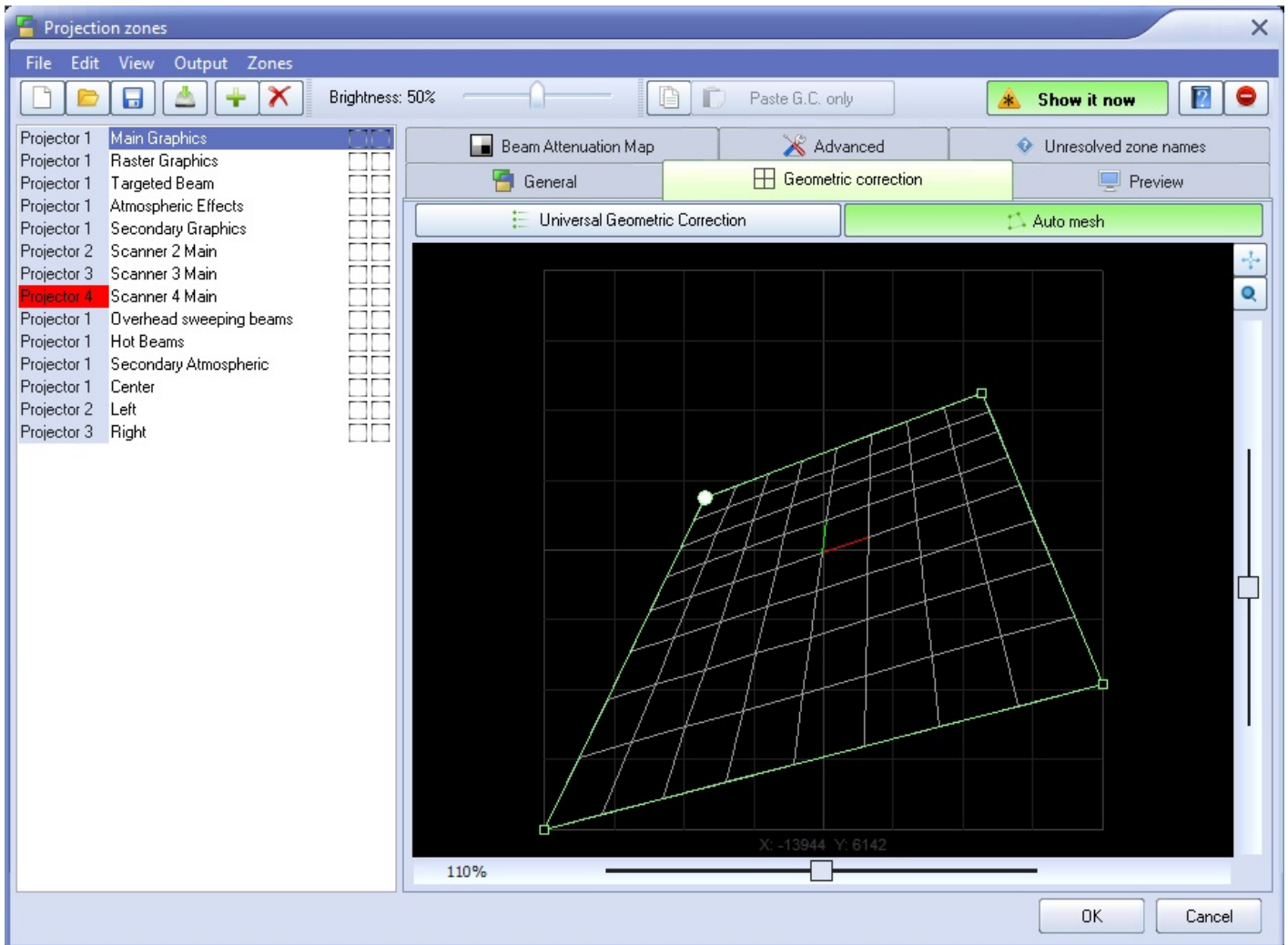
The next section shows the **Geometric Correction** parameters for the selected zone, and allows you to adjust it. The Geometric Correction settings allow you to adjust the **geometric correction** for each scanner. Moreover, each scanner can actually have multiple geometric correction settings if desired simply by directing more than one zone to the same scanner.

To adjust the geometric correction, you click, on the different **Correction Types** and then move the sliders that appear on the sides and top of the window, or you can click and drag the mouse in the window area.



Auto Mesh

As of QS 5.2 you can use the “Auto Mesh” tool which allows you to mesh your zone into place instead of using geometric correction, this will help users out a lot with off axis graphic projection.



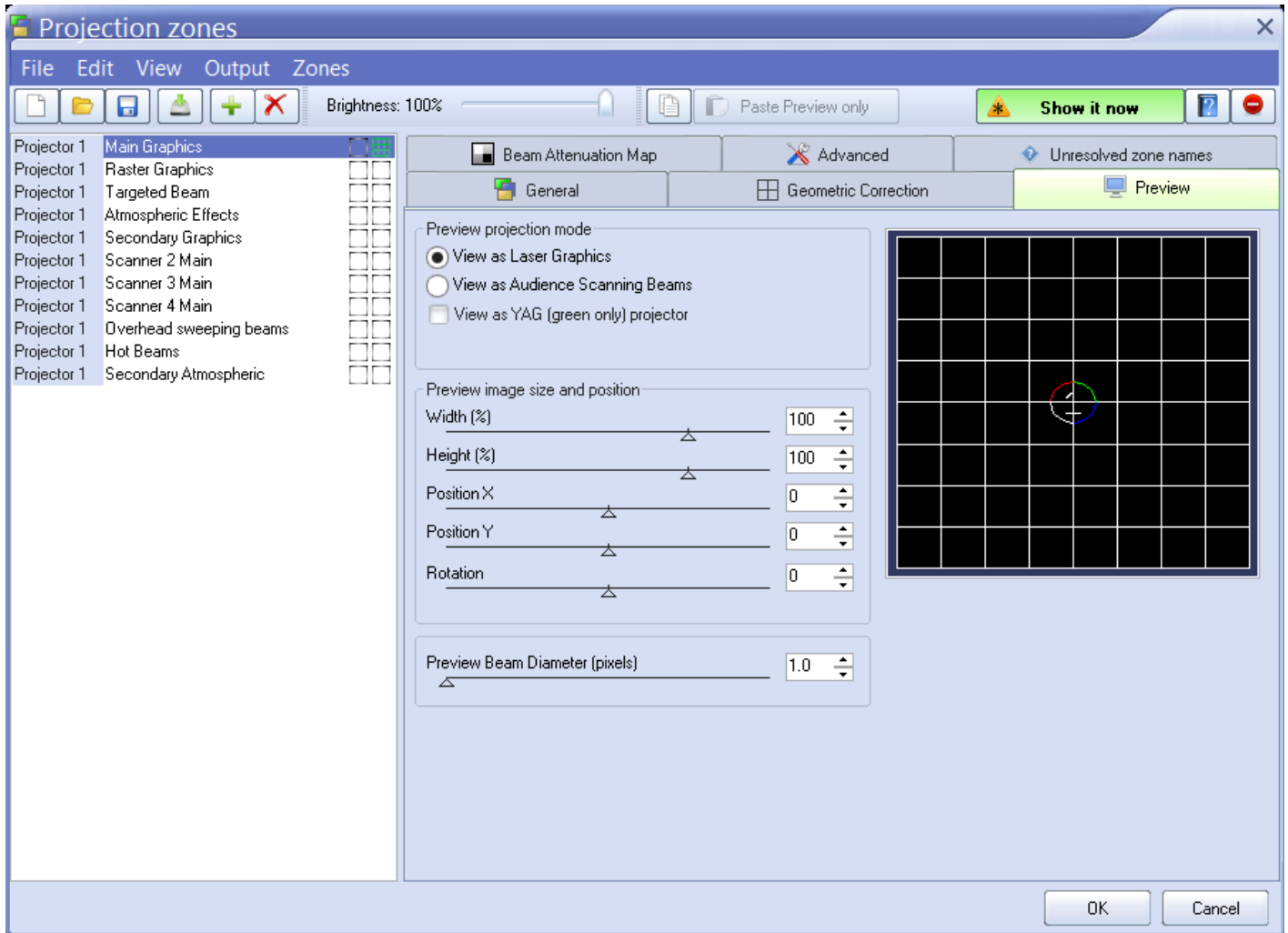
Preview Window Appearance section

The next section shows the **Preview** Window Appearance for the selected zone, and allows you to adjust it. Note that it is possible to specify a **Preview** Window Appearance for each projection zone, and this preview window appearance is independent of the laser output so master size, position and geometric correction do not affect the preview window.

For each zone, the **Preview image size and position** can be adjusted. Moreover, you can specify whether the preview for that zone should be normal **Laser Graphics**, or **Audience Scanning Beam** effects.

If you specify that the preview should be **Audience Scanning Beams**, you get a few more options. You can control the vanishing point created by the actual projector position. You can also choose whether or not to mirror the output and the position in the preview window.

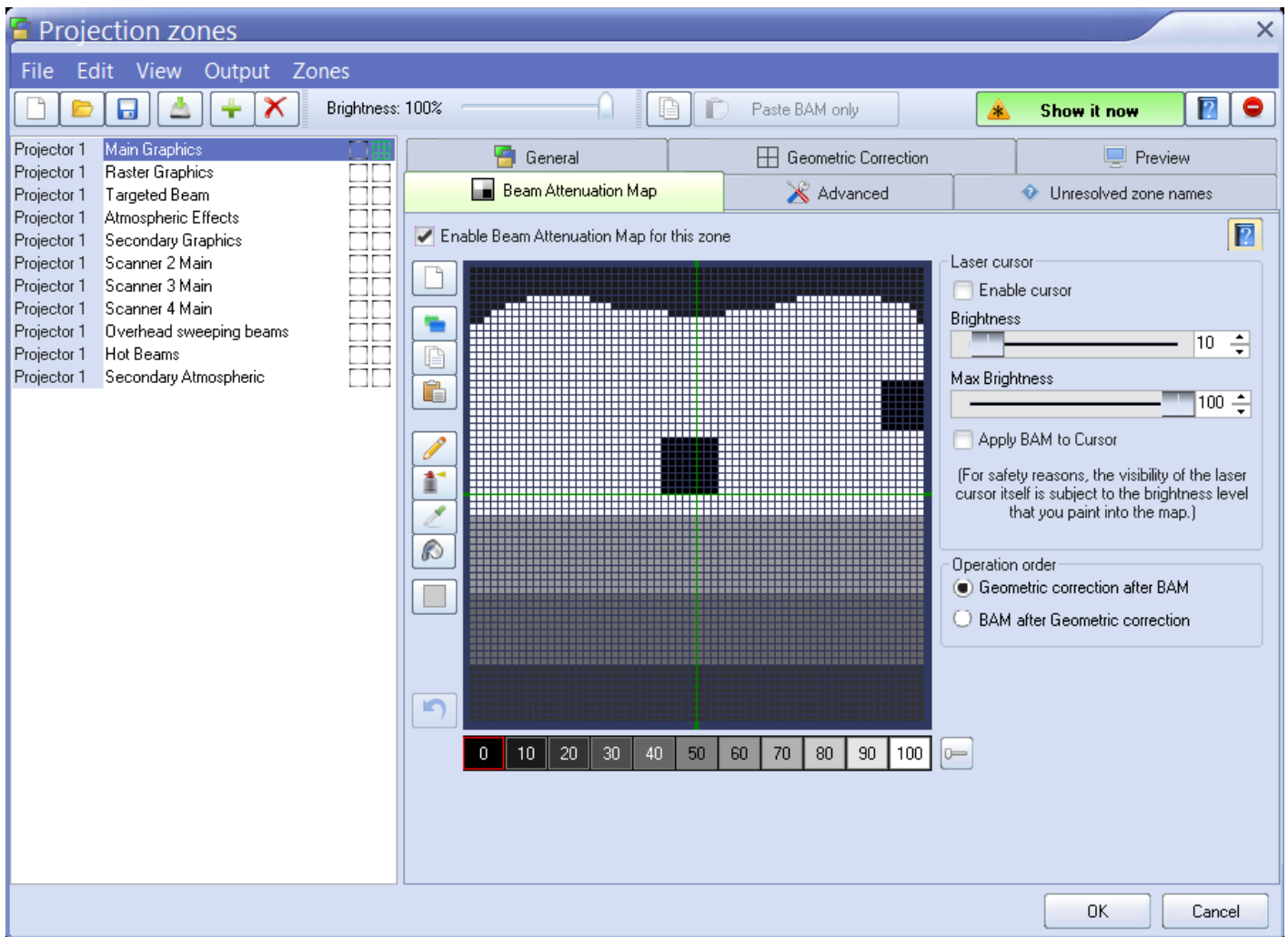
You would mirror the output and position when you are sending the output of a single FB3(FB4) to multiple scanners at either side of a stage. When this is selected, the preview window automatically duplicates and mirrors the output even though there is only one signal source for both scanners.



Note that with all of this flexibility, you can adjust the preview window for each zone to truly simulate what the show will look like in the final venue.

Beam Attenuation Map section

The next section shows the **Beam Attenuation Map** section for the selected zone, and allows you to adjust it. The **Beam Attenuation Map** allows you to control the brightness of the beam over the entire projection zone and allows non-uniform brightness maps.

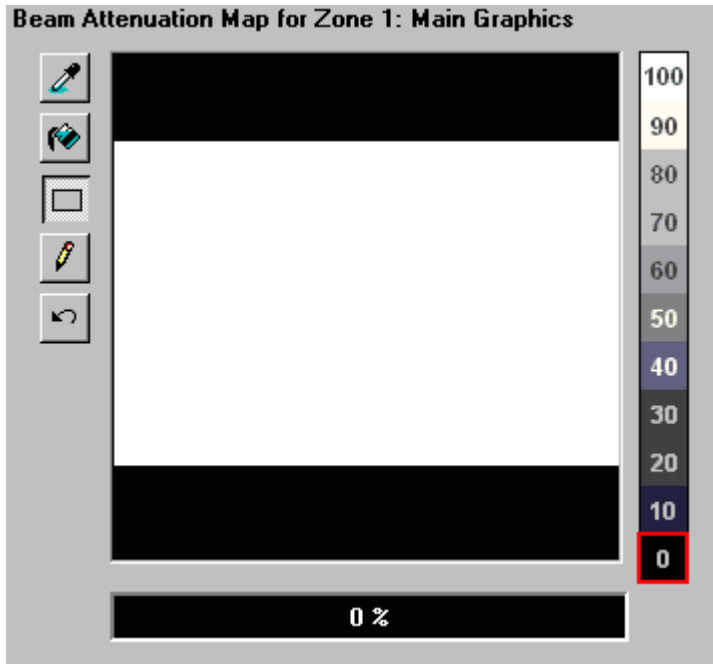


The **Beam Attenuation Map** is a 64 by 64 “pixel” brightness control map. Each pixel can be set to any brightness level from 0 to 100%. Rudimentary tools are provided to sample a brightness level in the map, fill the entire map with the selected brightness level, fill a rectangular area with the selected brightness level and freehand-draw brightness levels into the map.

The **Beam Attenuation Map** can be used for graphics, atmospheric and beam effects.

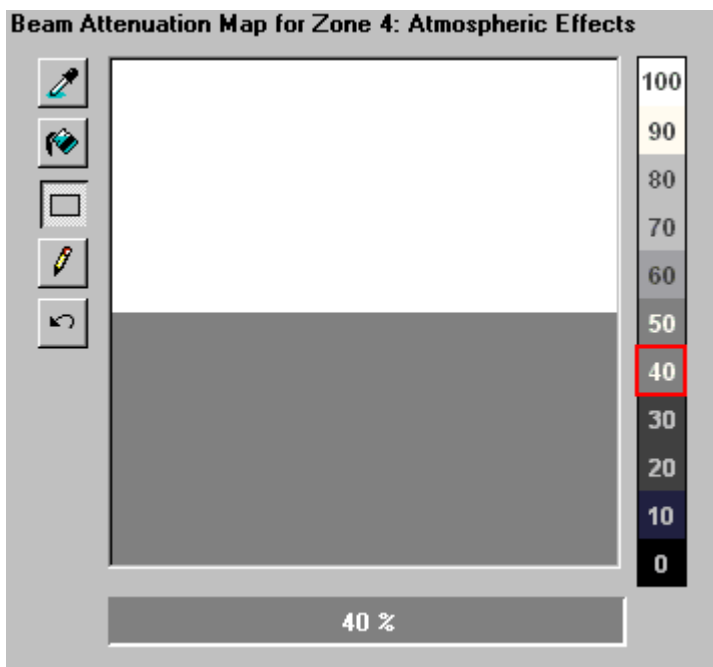
Example Beam Attenuation Map use with laser graphics

One common graphics use would be to prevent scanning above or below a certain point. For example, lets say that you were projecting laser graphics over a standard television screen with a 4:3 aspect ratio. Since the laser typically has a 1:1 aspect ratio, this would mean that the graphics could possibly scan above the top or below the bottom of the screen. You can use the **Beam Attenuation Map** to make sure that the brightness at the top and bottom of the screen is zero.



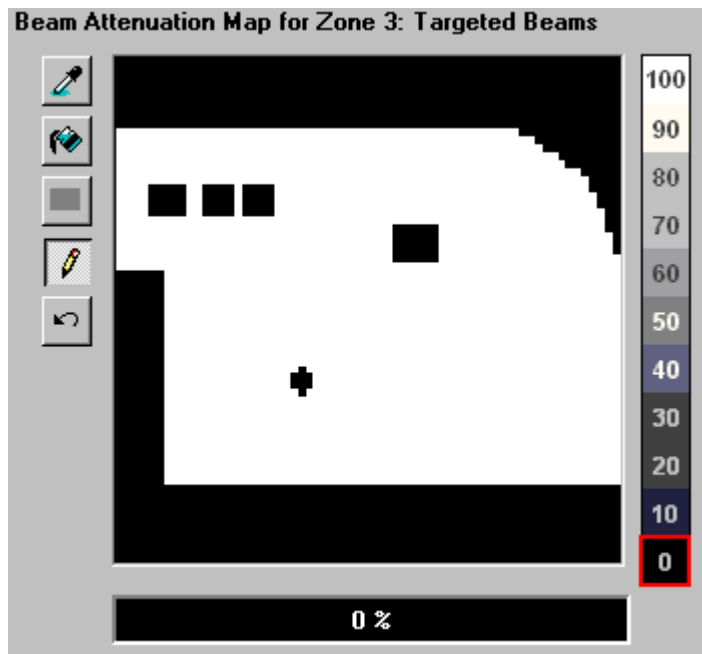
Example Beam Attenuation Map use with audience scanning

Another common use would be to reduce the brightness below the horizon to a level that would be more pleasing for audience scanning viewers. This can easily be done by selecting a reduced brightness level, and filling the rectangular area below the horizon.



Example Beam Attenuation Map use with targeted beam effects

Another common use would be to protect certain areas from hazardous laser exposure or to reduce the brightness in certain areas. When doing beam shows outdoors, it is often necessary to ensure certain areas (such as the windows in certain buildings) won't be exposed. Using the rudimentary drawing tools, it is possible to "carve out" areas from the projected area.



Advanced Scanning Parameters section

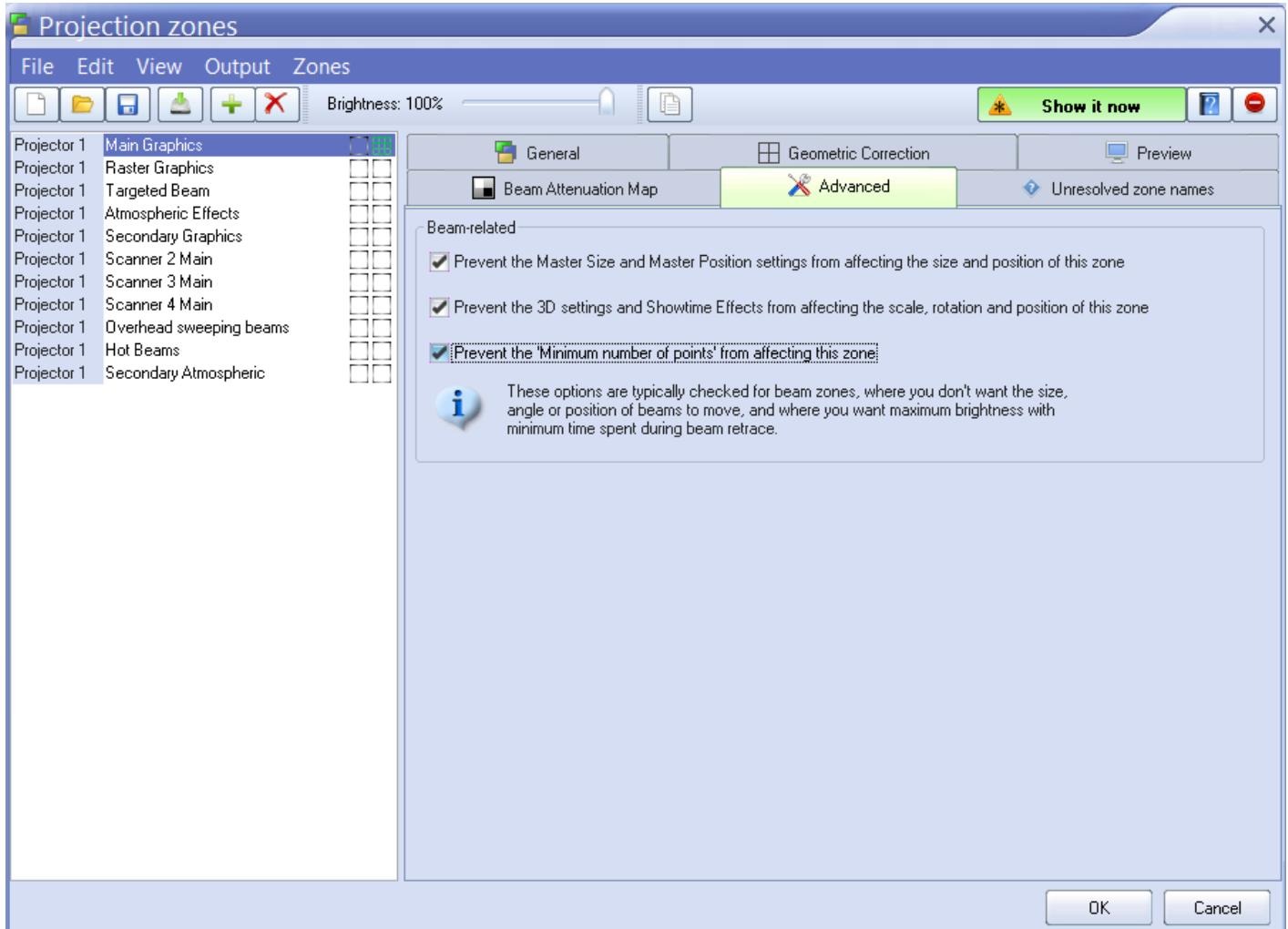
The next section shows the **Advanced Scanning Parameters** for the selected zone, and allows you to adjust them. These are advanced scanning parameters which are particularly well suited for zones used for targeted beam effects.

When the **Prevent master size and master position** check box is checked, it will make it so that the **Size and Position** controls in the **Projector Settings** window do not affect the output of this zone.

When the **Prevent 3D settings and Showtime effects** check box is checked, it will make it so that the output of this zone is not affected at all by any effect that would cause beam frames to no longer hit their intended targets. For example, if you painstakingly adjusted the position of a beam to precisely hit a mirror, you would not want the position of this beam to be affected in any way. The two options above ensure that even if you mistakenly use affects that would change the position, or accidentally change the Master Size settings, these beams will continue to hit their intended targets.

The **Minimum number of points** setting in the **Projector Settings** window can be adjusted to relieve the scanners from trying to scan high duty-cycle images that might cause power limiting. Setting the

Minimum number of points to 200 or higher can actually increase the life of your scanners. However, doing so will mean that if you project less than 200 points, the additional points will be blanked. For beam frames, it is often undesirable to have any unintended blanking at all because such blanking would tend to reduce the power of the display. When the **Prevent minimum number of points** check box is checked, all scanner output will be dedicated strictly to producing laser output and the Minimum number of points setting is ignored.



Recommended use of the first eight zones

Although we do not restrict the use of zones in any way, for maximum compatibility Pangolin recommends that the first 8 projection zones be used as follows:

Zone Scanner Name Comment

Zone 1 Scanner 1 Scanner 1 Main Used for most common output

Zone 2 Scanner 2 Scanner 2 Main Used for anything directed to scanner 2

Zone 3 Scanner 3 Scanner 3 Main Used for anything directed to scanner 3

Zone 4 Scanner 4 Scanner 4 Main Used for anything directed to scanner 4

Zone 5 Any scanner Secondary Graphics Used for a second graphics screen

Zone 6 Any scanner Raster Graphics Reduced in size used for raster graphics (retained for compatibility with LD2000 zones)

Zone 7 Any scanner Hot Beams Used for high-intensity beams which may or may not be directed within the audience area

Zone 8 Any scanner Atmospheric Effects Used for atmospherics and audience scanning (retained for compatibility with LD2000 zones)

Zone 30 Any scanner Targeted Beams Used for QuickTargets beams

Sending cues to specific Projection zones

Projection Zones can be specified within QuickShow cues, so that when you trigger a cue, it will automatically be sent to one or more specific zones. See the help topic about [Cue Properties](#) for more information.

Projection Zones are not available in Beginner mode

The Projection Zones menu and window are only visible when you have the [User Level](#) set to **Intermediate** or **Advanced** mode. They do not appear if you are in **Beginner** mode.

See Also

- [Settings menu](#)
- [Projector Settings](#)
- [QuickTargets Beam Settings](#)

[Return to Index](#)

From:
<https://wiki.pangolin.com/> - **Complete Help Docs**

Permanent link:
https://wiki.pangolin.com/doku.php?id=quickshow:projection_zones&rev=1679426642

Last update: **2023/03/21 20:24**

