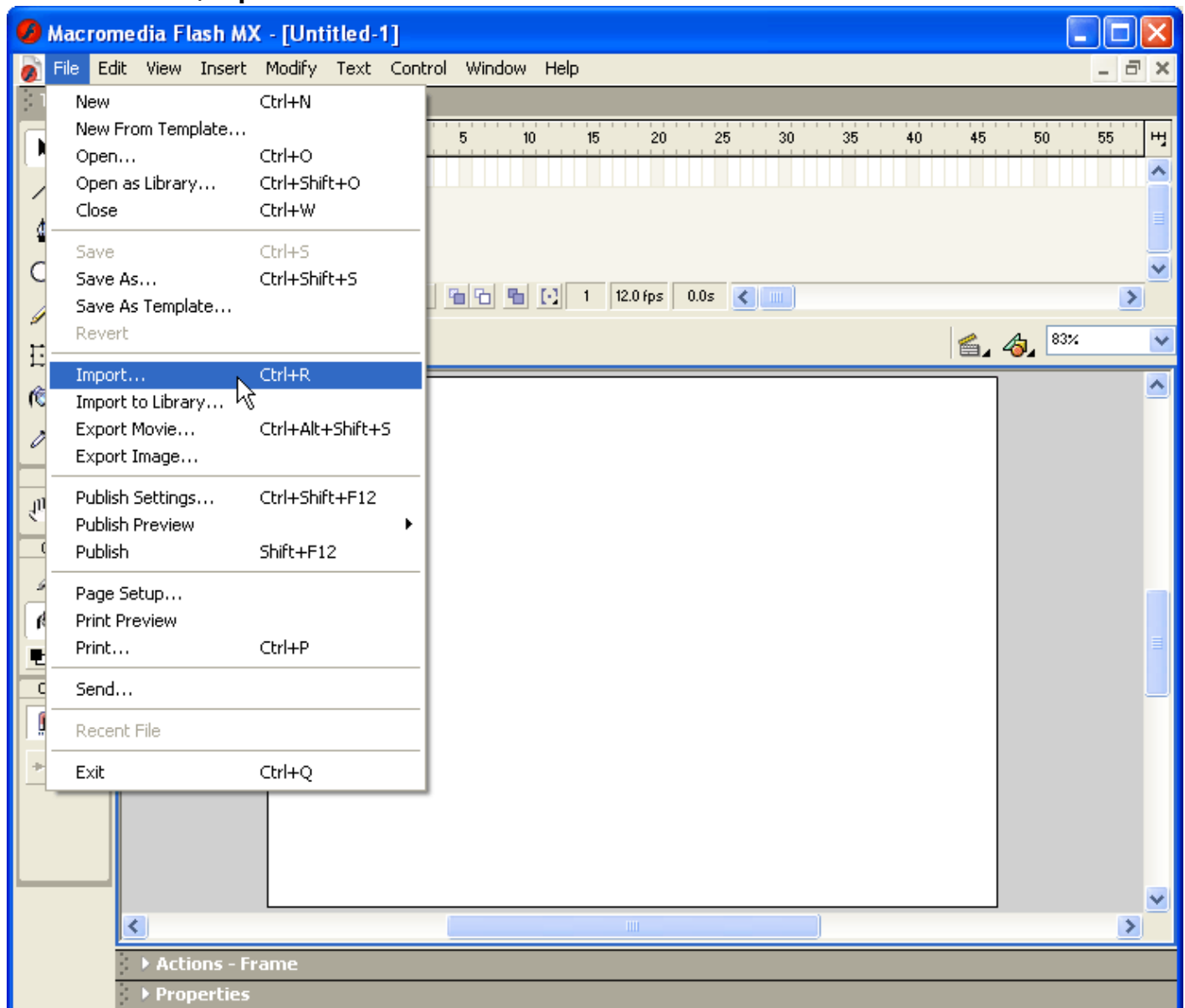


Tips: Importing artwork

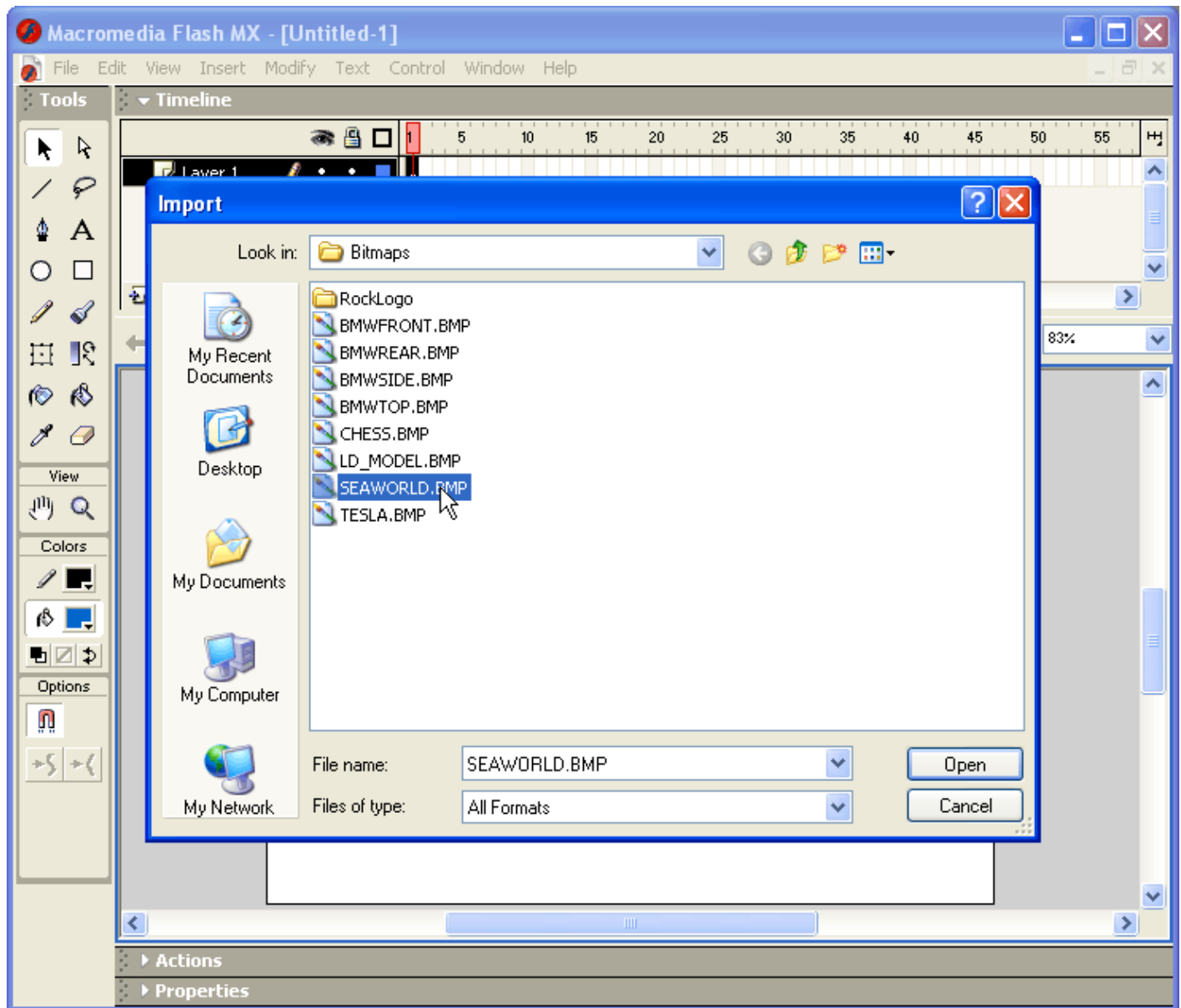
It is possible to use Lasershow Converter FLASH along with Adobe Flash to perform outline traces of Bitmaps. In this way, you can use the combination of these two programs to form a raster-to-vector converter.

Tracing a bitmap with Adobe Flash

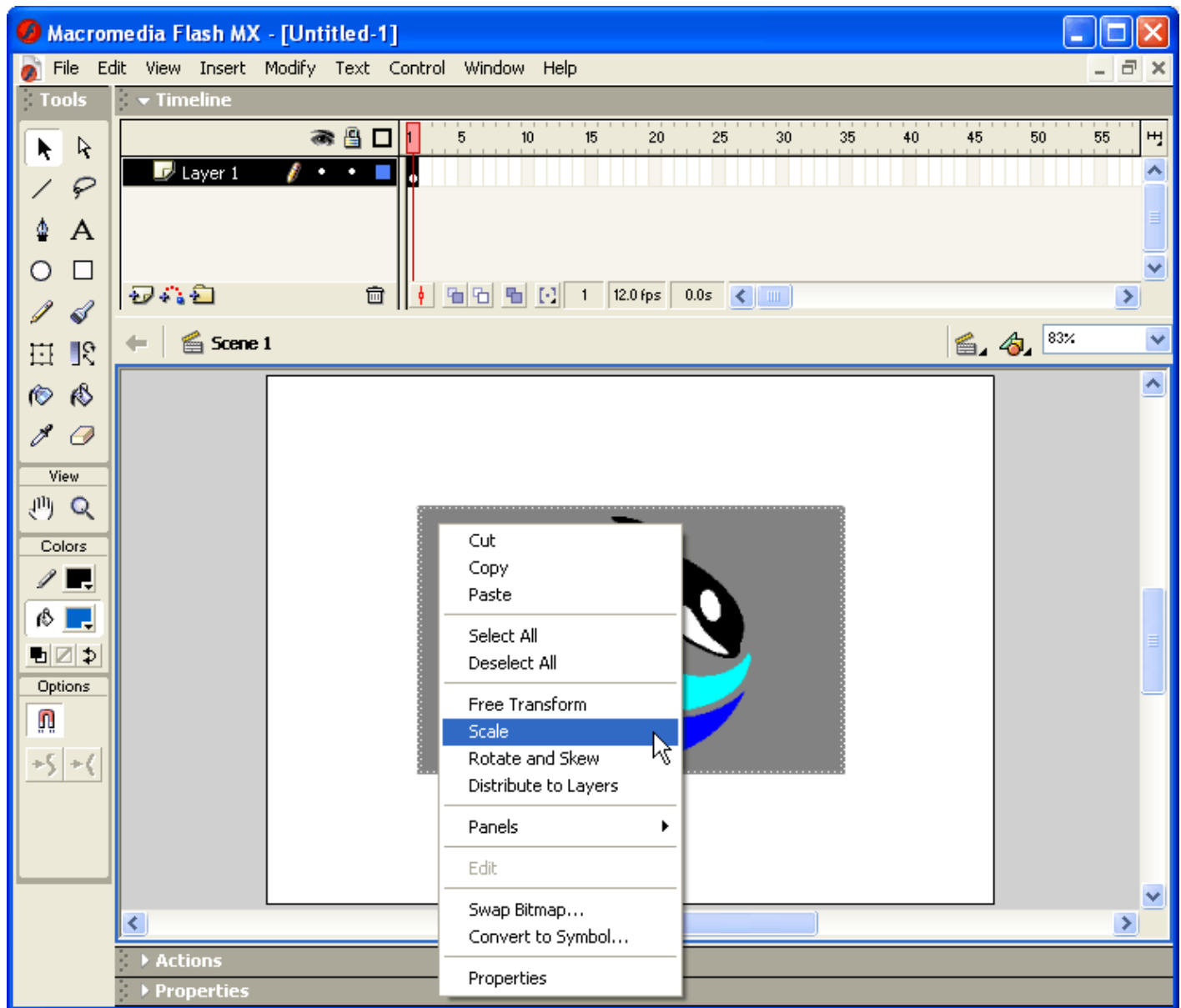
1. Select the **File/Import** menu in Adobe Flash.



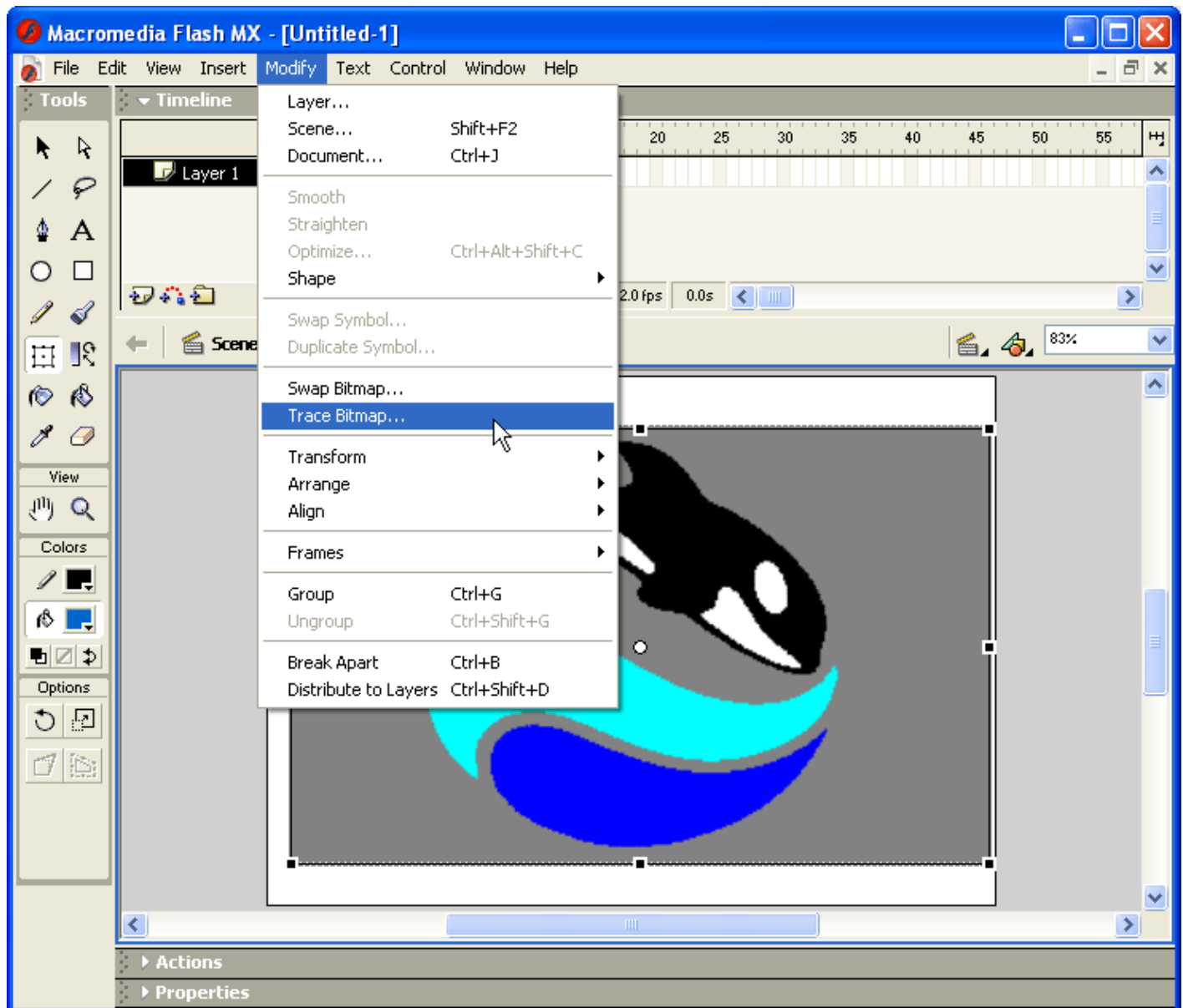
2. Select the bitmap file that you want to trace.



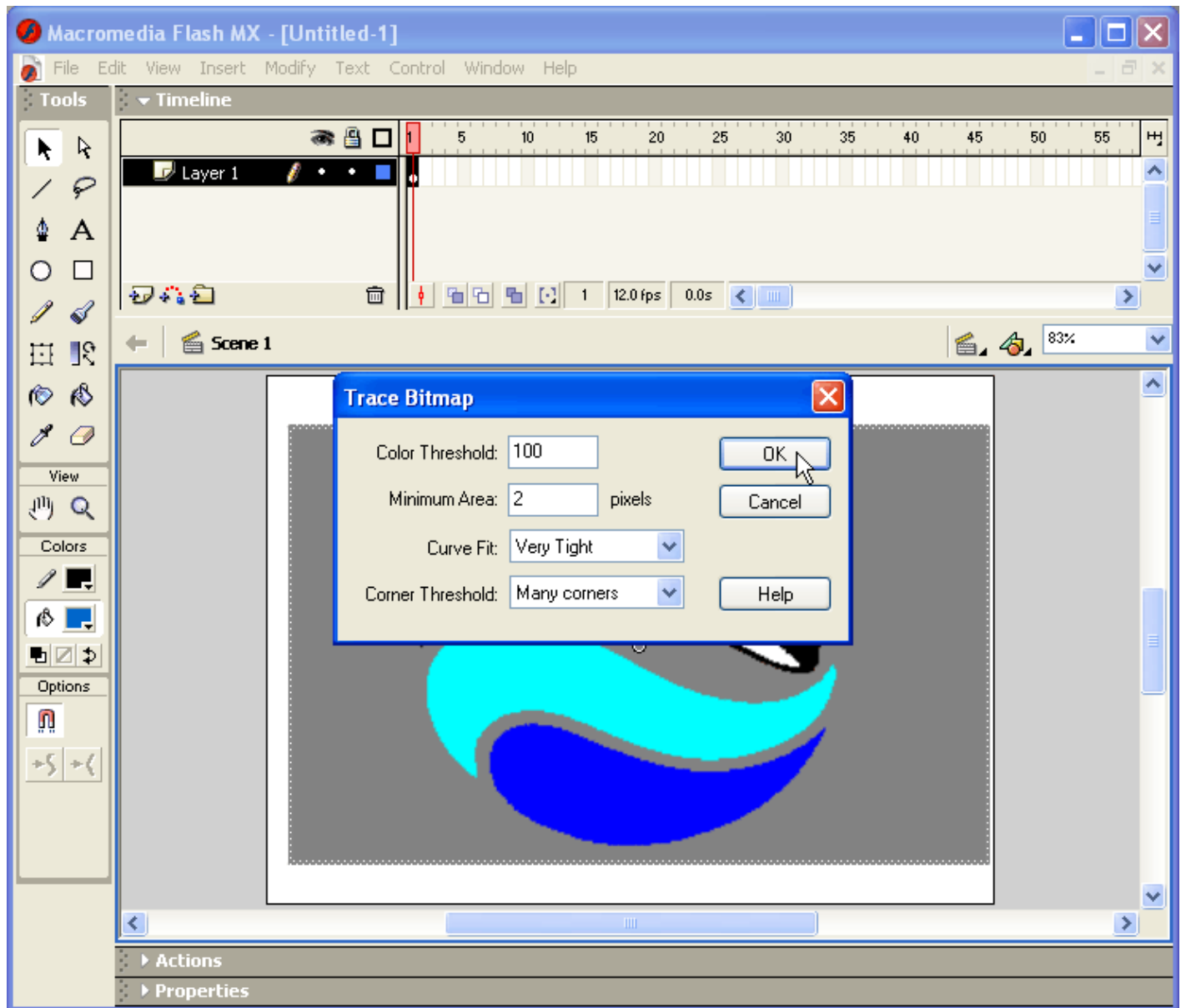
3. Click the right mouse button on the bitmap and select **Scale**. Then use the “handles” on the image to stretch it to the desired size.



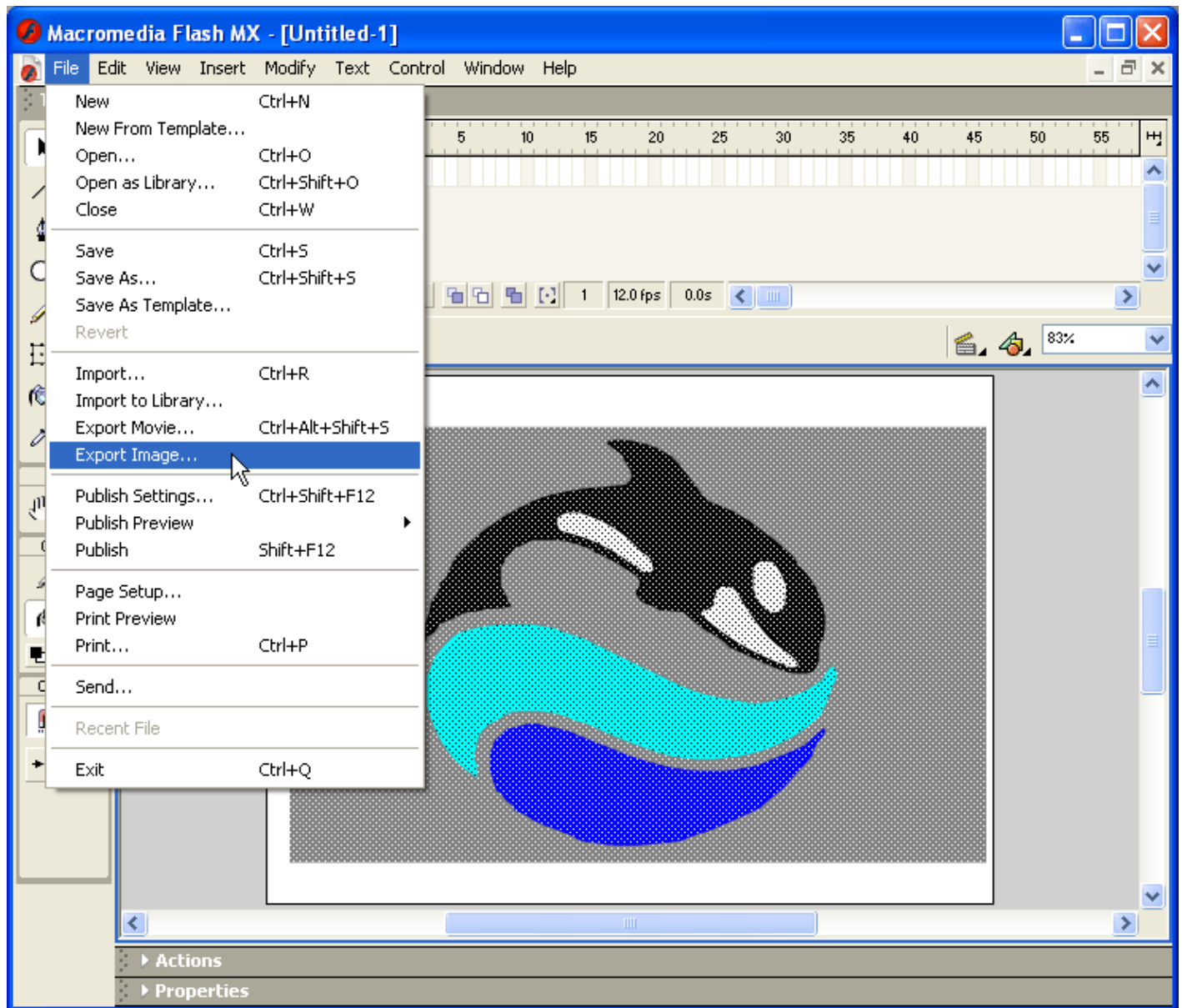
4. Select the **Modify/Trace Bitmap** menu.



5. Change the settings in the Trace Bitmap dialog box as necessary. We have found that "Very Tight" curve fit and "Many Corners" Corner Threshold works well.



6. Select the File/Export Image menu and then specify a file name for the file that you want to save.



[Go Back](#)

From:
<http://wiki.pangolin.com/> - **Complete Help Docs**

Permanent link:
http://wiki.pangolin.com/doku.php?id=tools:lcflash:import_artwork

Last update: **2021/04/23 12:42**

