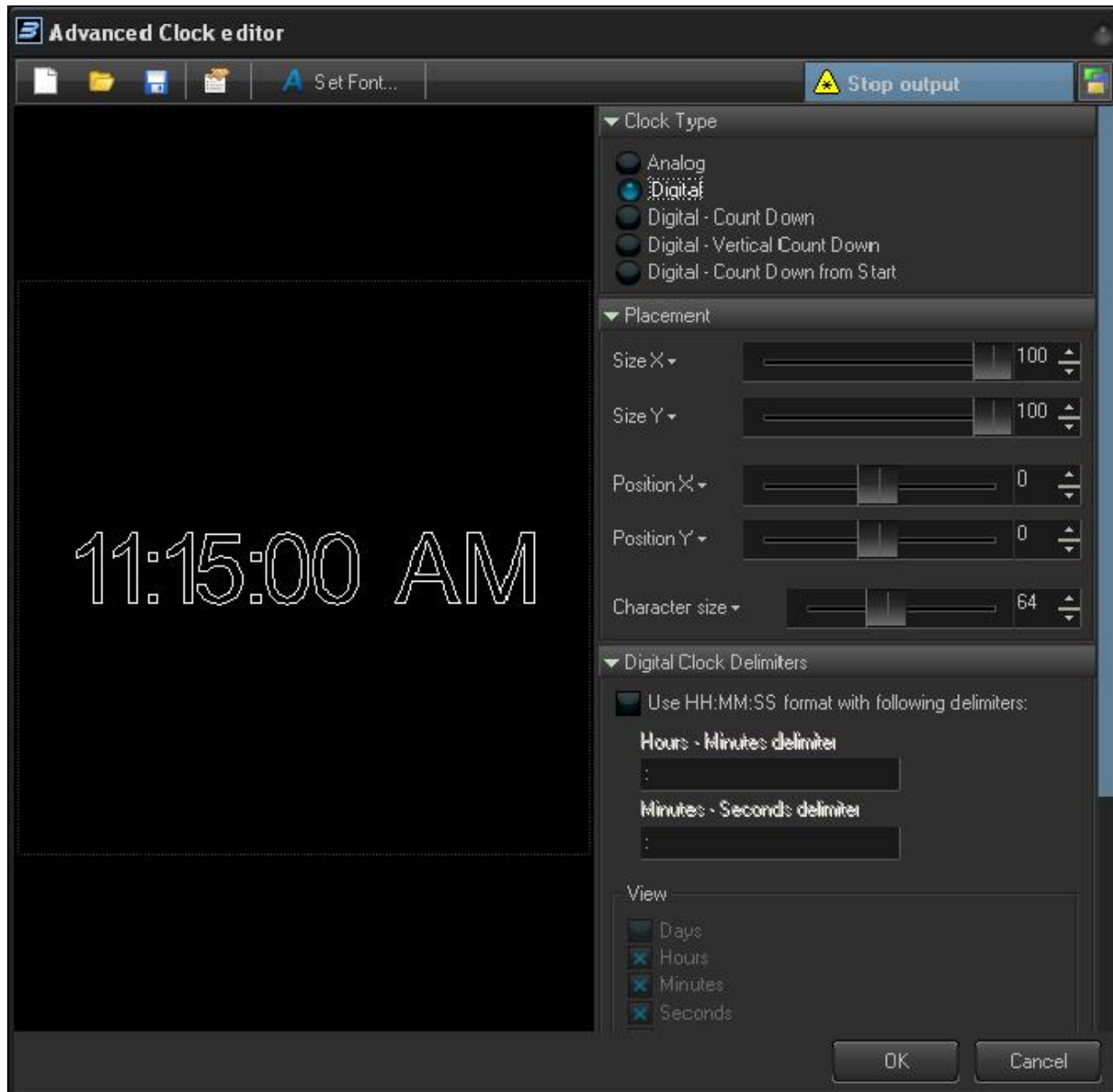


# Advanced Clock editor

To round out the set of advanced features, BEYOND also includes an Advanced Clock editor which can be used to create analog or digital clocks that can count up and down, and in horizontal or vertical orientation. The main window of the Advanced Clock editor is shown below, along with a view of the main controls.



As seen above, count-up or count-down clocks can easily be created, and may even include milliseconds if desired!

From:

<https://wiki.pangolin.com/> - **Complete Help Docs**

Permanent link:

[https://wiki.pangolin.com/doku.php?id=beyond:advanced\\_clock\\_editor](https://wiki.pangolin.com/doku.php?id=beyond:advanced_clock_editor)

Last update: **2020/06/11 19:20**

