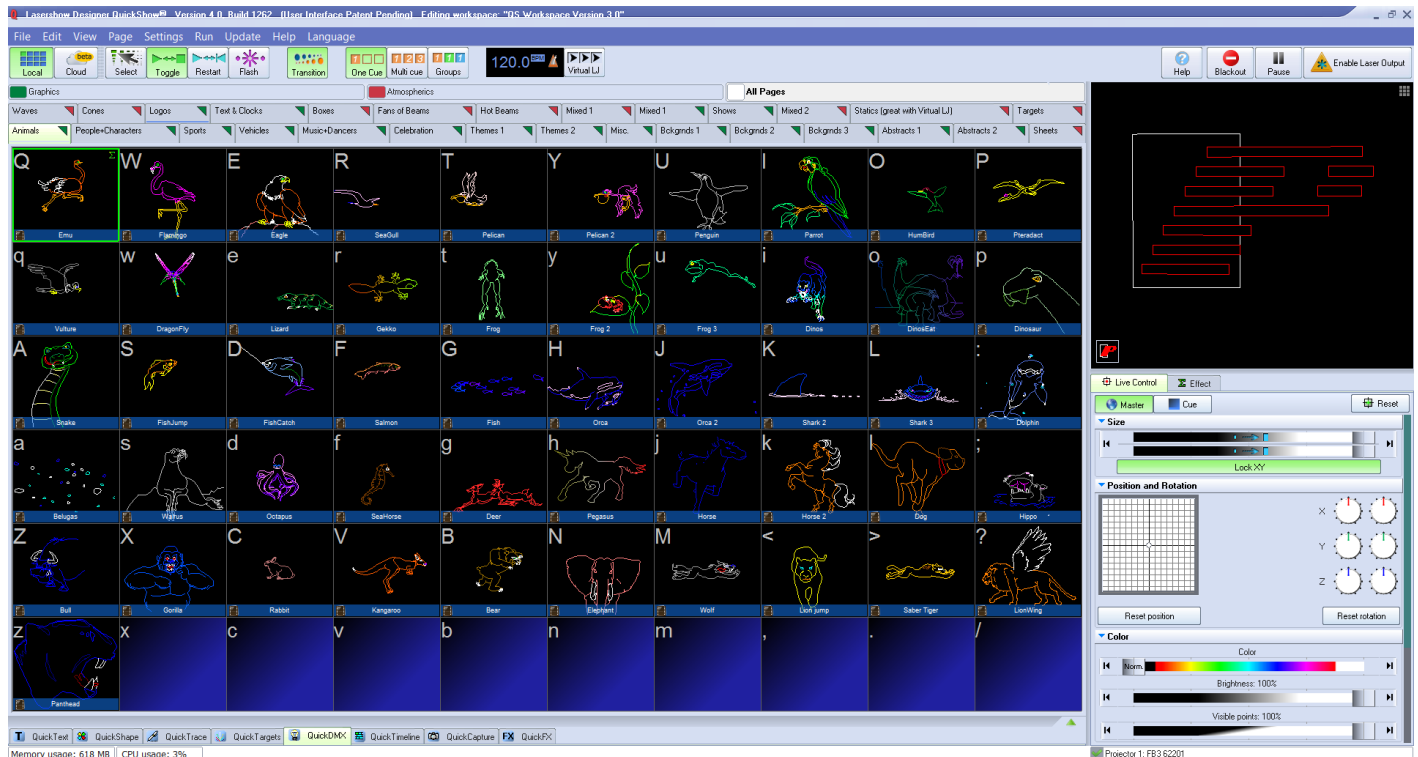


Main Control Window

Below you will see a picture of the QuickShow Control Window. The Control Window is divided into sections. The largest section contains the **Cue Grid**. This is where you select and trigger cues. The lower section contains the QuickTools where new content creation takes place. The right section contains the Live control tab and Effect Editor tab.



See Also

- [Cue Grid](#)
- [Live Control tab](#)
- [QuickTools](#)
- [Laser Preview window](#)

[Return to Index](#)

From:
<http://wiki.pangolin.com/> - **Complete Help Docs**

Permanent link:
http://wiki.pangolin.com/doku.php?id=quickshow:main_control_window

Last update: **2020/06/11 19:20**

