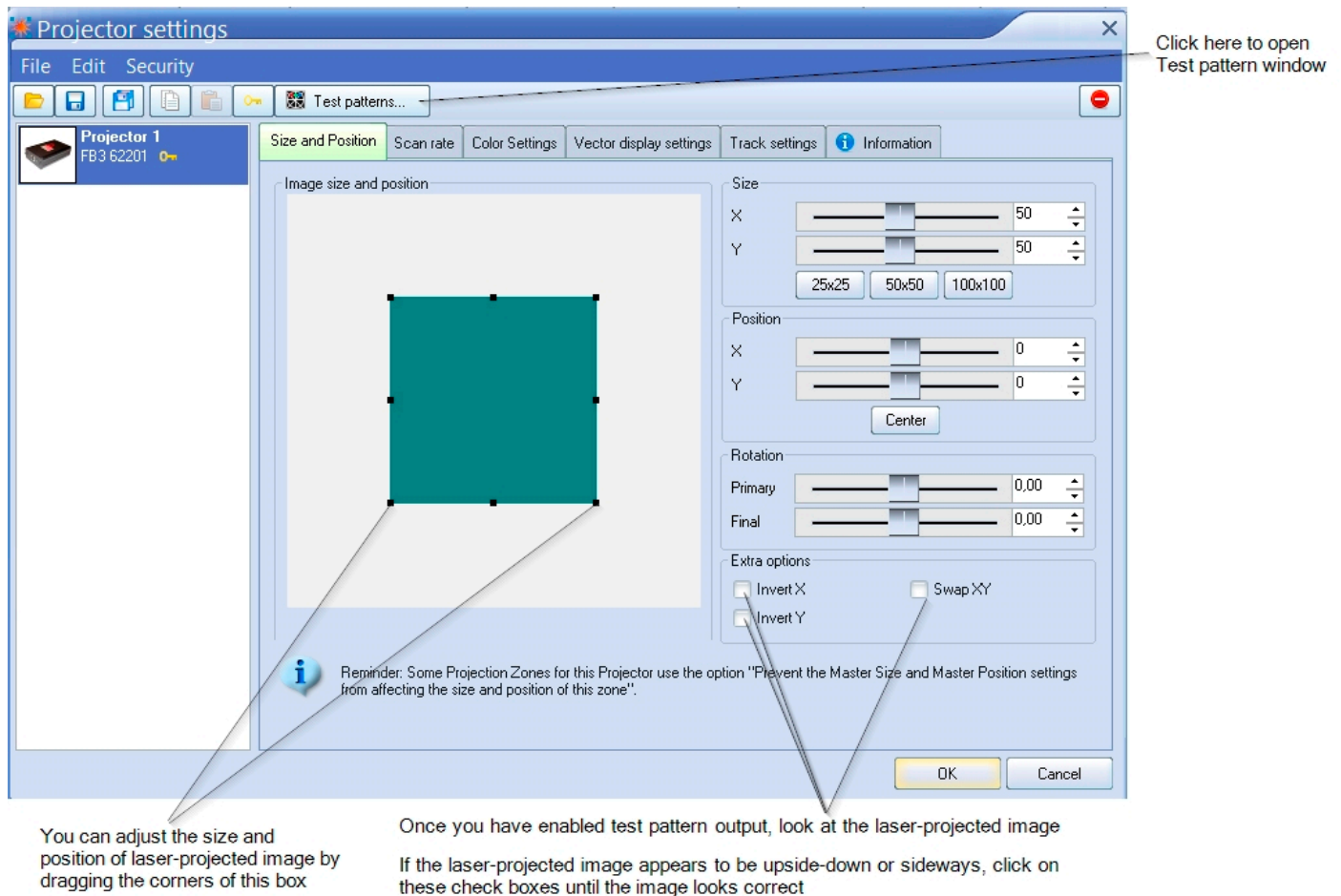


# Projector Settings

The **Projector Settings** window allows you to configure QuickShow for your of projector. Available settings include size, position, scan rate, color shift, number of colors and color levels. For information on how to optimize these settings, please see Chapter 2 of the Video Help.

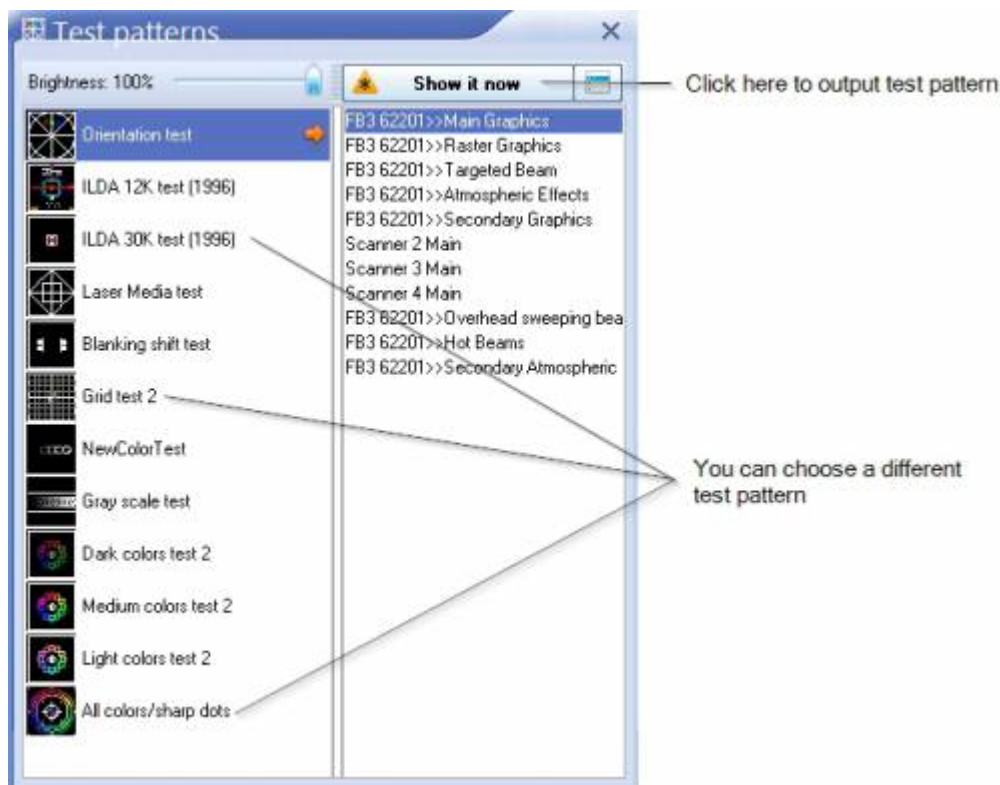
The first page of the **Projector Settings** window is shown and described in the picture below.



The screenshot shows the 'Projector settings' window with a menu bar (File, Edit, Security) and a toolbar. The 'Test patterns...' button is highlighted with an arrow and the text 'Click here to open Test pattern window'. The 'Size and Position' tab is selected, showing a preview of a teal square on a light gray background. The 'Size' section has sliders for X and Y, both set to 50, with buttons for 25x25, 50x50, and 100x100. The 'Position' section has sliders for X and Y, both set to 0, and a 'Center' button. The 'Rotation' section has sliders for 'Primary' and 'Final', both set to 0.00. The 'Extra options' section has checkboxes for 'Invert X', 'Invert Y', and 'Swap XY'. A reminder message states: 'Reminder: Some Projection Zones for this Projector use the option "Prevent the Master Size and Master Position settings from affecting the size and position of this zone"'. The 'OK' and 'Cancel' buttons are at the bottom right.

You can adjust the size and position of laser-projected image by dragging the corners of this box

Once you have enabled test pattern output, look at the laser-projected image  
If the laser-projected image appears to be upside-down or sideways, click on these check boxes until the image looks correct

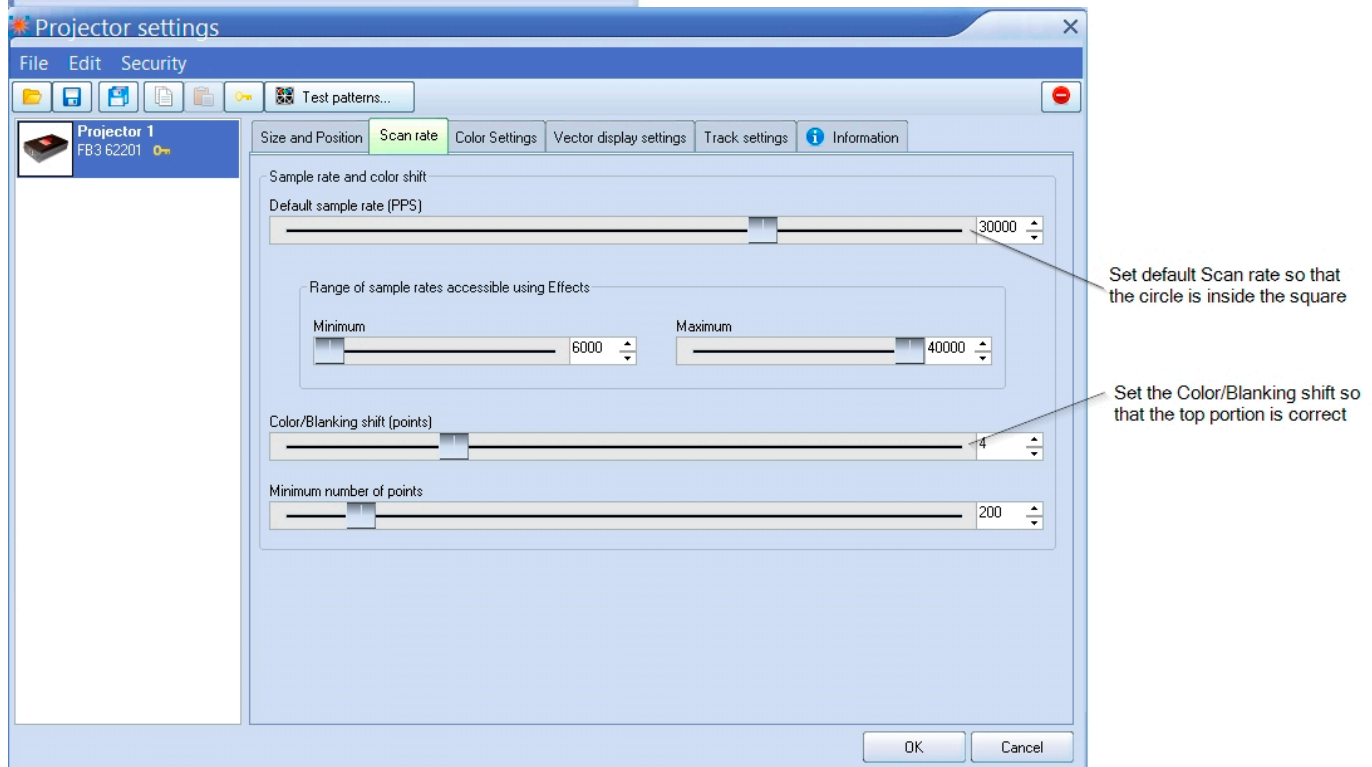
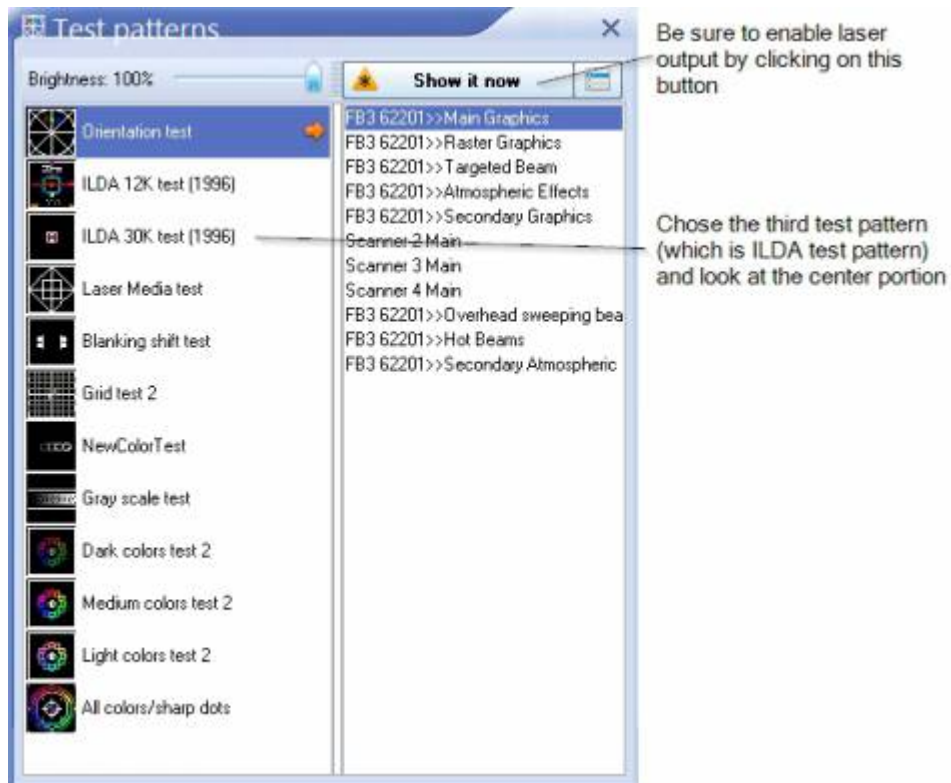


## Setting the Size and position, and extra options

Within the **Size and position** tab shown above, the most important thing to do is to show a test pattern, and then adjust the size and position tool to fit the projected output to your projection screen (or area), and also the **Invert X**, **Invert Y** and **Swap XY** check boxes. We have noticed that some projector manufacturers require one or more of these check boxes to be checked in order for the “TOP” to look properly.

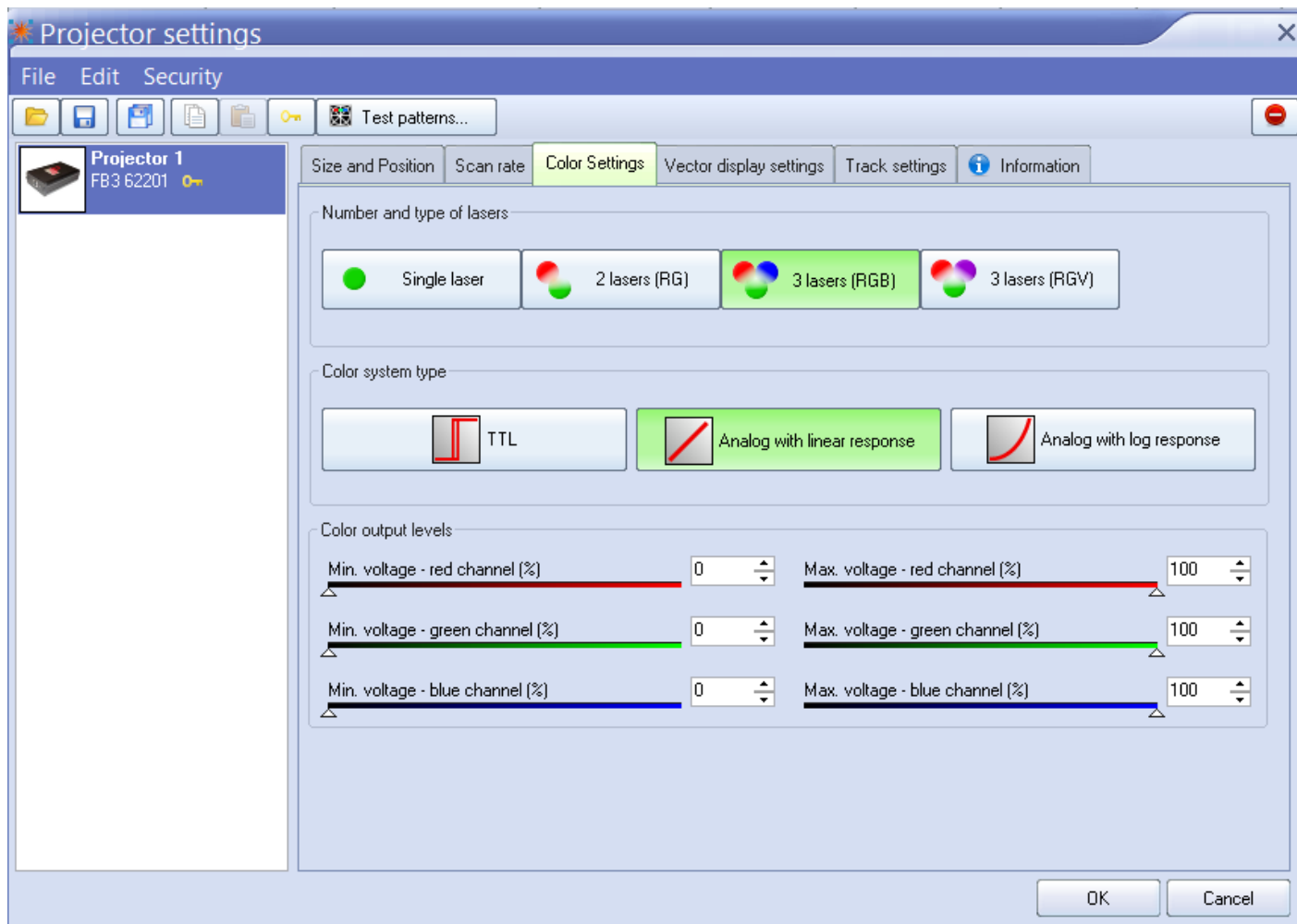
## Setting the Scan rate

Another important part of the Projector Settings window is the **Scan rate** tab, as shown below.



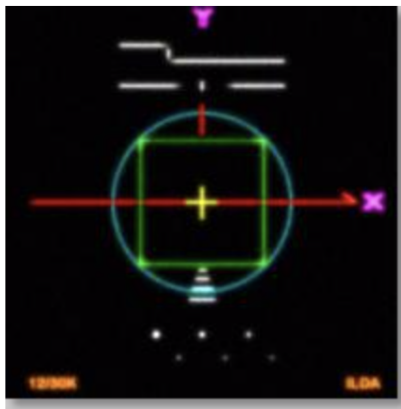
## Setting up the colors

The Color Settings tab is shown below. Be sure to indicate the number and type of lasers in your projector, and the color modulation scheme (Color system type) to use for your projector.

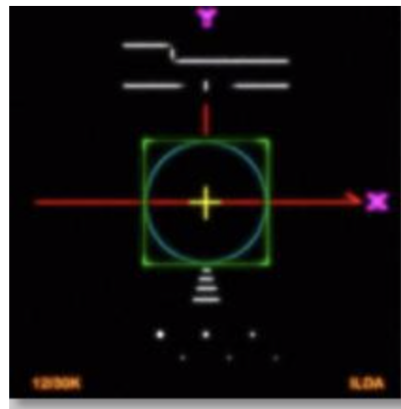


## Using the ILDA Test Pattern to set the Default Scan rate

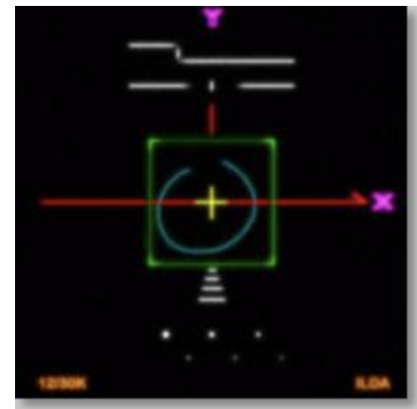
The ILDA tuning standard dictates that your scanners can show the ILDA Test Pattern in a specific way (circle touching the sides of the square), when the ILDA Test Pattern is displayed at the correct scan speed (points per second):



Scanning too slow:  
Circle outside of square



Scanning correctly:  
Circle touches midpoint of square

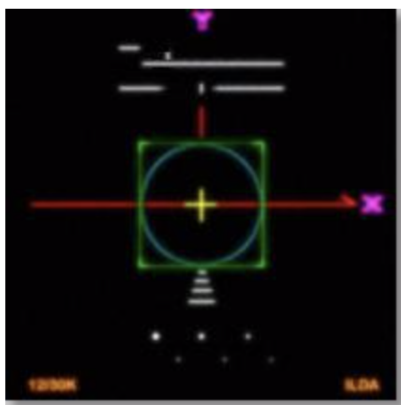


Scanning too fast:  
Circle can't touch square

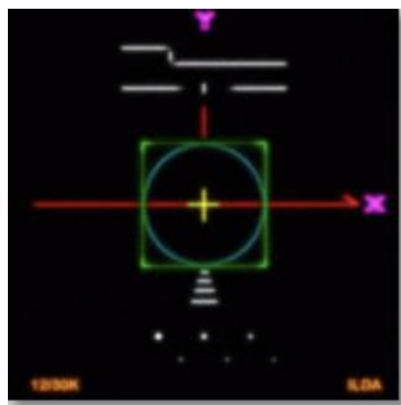
As you are projecting the ILDA test Pattern, look very carefully at the central section of the test pattern. Adjust the **Default Scan rate** slider in the **Projector Settings** window so that the circle is just touching the sides of the square. Note that sometimes the circle may touch only the sides but may be over on the top and bottom, or vice versa. Just adjust the slider for the best overall appearance of circle touching the square.

## Using the ILDA Test Pattern to set the Color/Blanking shift

Just below the purple Y in the ILDA Test Pattern, there is a set of long horizontal lines around short vertical lines. The ILDA tuning standard dictates that the horizontal lines should be approximately centered around the vertical lines.



Color shift too low:  
Horizontal lines shifted too far left



Color shift correct:  
Horizontal lines approximately centered



Color shift too high:  
Horizontal lines shifted too far right

As you are projecting the ILDA test Pattern, look very carefully at the horizontal lines below the letter Y. Adjust the **Color/Blanking shift** slider in the **Projector Settings** window so that the horizontal lines are approximately centered around the vertical lines. Since the **Color/Blanking shift** is a somewhat coarse adjustment, it may not be possible to get the horizontal lines perfectly centered around the vertical lines. It is acceptable that the top set of horizontal lines be shifted slightly to the right – lining up under the

letter Y.

## Better scanners provides better results

Although QuickShow will work with any scanners and scan speed, QuickShow provides the best results with 30K or faster scanners that are tuned perfectly. Please make sure that the low frequency damping and high frequency damping are adjusted properly for “critical damping.”

---

See Also

- [Settings menu](#)

[Return to Index](#)

From:

<https://wiki.pangolin.com/> - **Complete Help Docs**

Permanent link:

[https://wiki.pangolin.com/doku.php?id=quickshow:projector\\_settings&rev=1591896033](https://wiki.pangolin.com/doku.php?id=quickshow:projector_settings&rev=1591896033)

Last update: **2020/06/11 19:20**

